





**** CHARACTER PROPERTY
WITH A GOOD SIZE REAR
GARDEN AND PLENTY OF
POTENTIAL ****

CONVENIENT LOCATION

**** In brief the property
offers a hall, lounge and a
dining room, kitchen with
pantry, and a bathroom.
Three first floor bedrooms
and wc. Rear garden.



HALL

Entrance door into the hall with stairs to the first floor and a radiator.

SITTING ROOM

Upvc double glazed window and a radiator.

LOUNGE

Upvc double glazed windows to the side and rear, radiator.

KITCHEN

Fitted, units, work surfaces, sink and drainer unit. Cooker and appliance spaces, pantry, upvc double glazed window and door to the side and a door to the bathroom.

BATHROOM

Low flush wc, wash hand basin, bath, upvc double glazed window, radiator.

FIRST FLOOR LANDING

Doors to -

BEDROOM 1

Two upvc double glazed windows to the front and a radiator.

BEDROOM 2

Upvc double glazed window and radiator.

BEDROOM 3

Upvc double glazed window and radiator.

WC

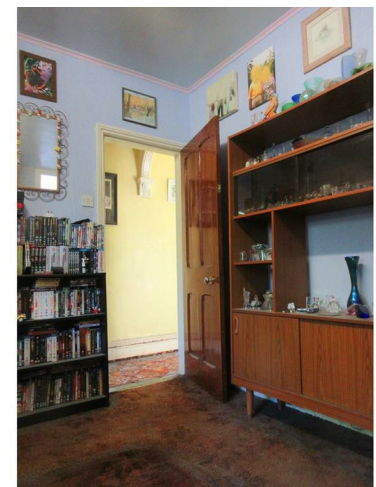
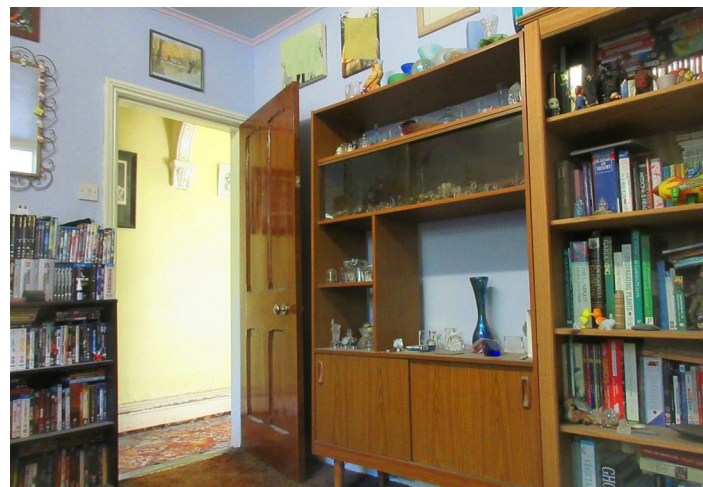
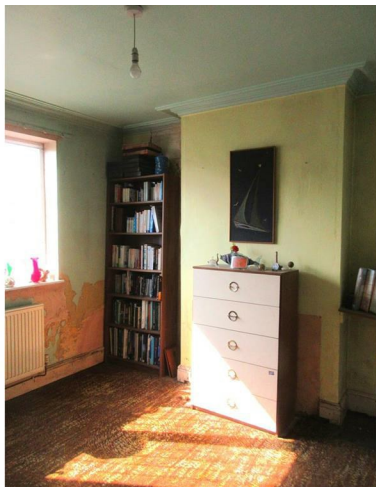
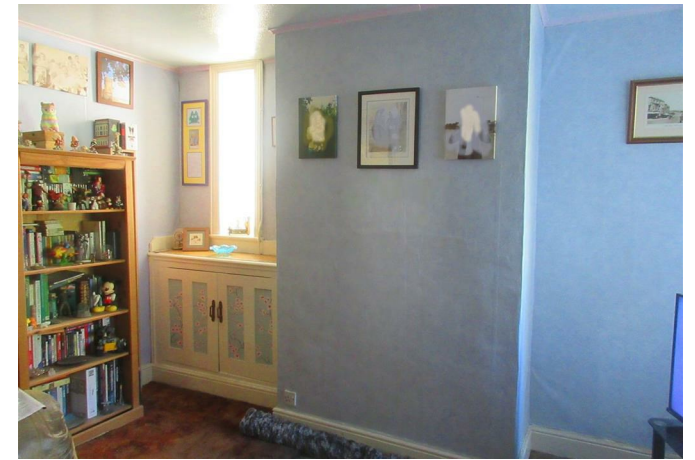
Low flush wc, wash hand basin, radiator and upvc double glazed window.

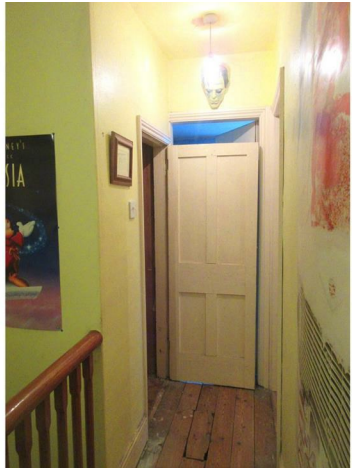
OUTSIDE



Front fore garden, side gated access to the good sized rear garden.

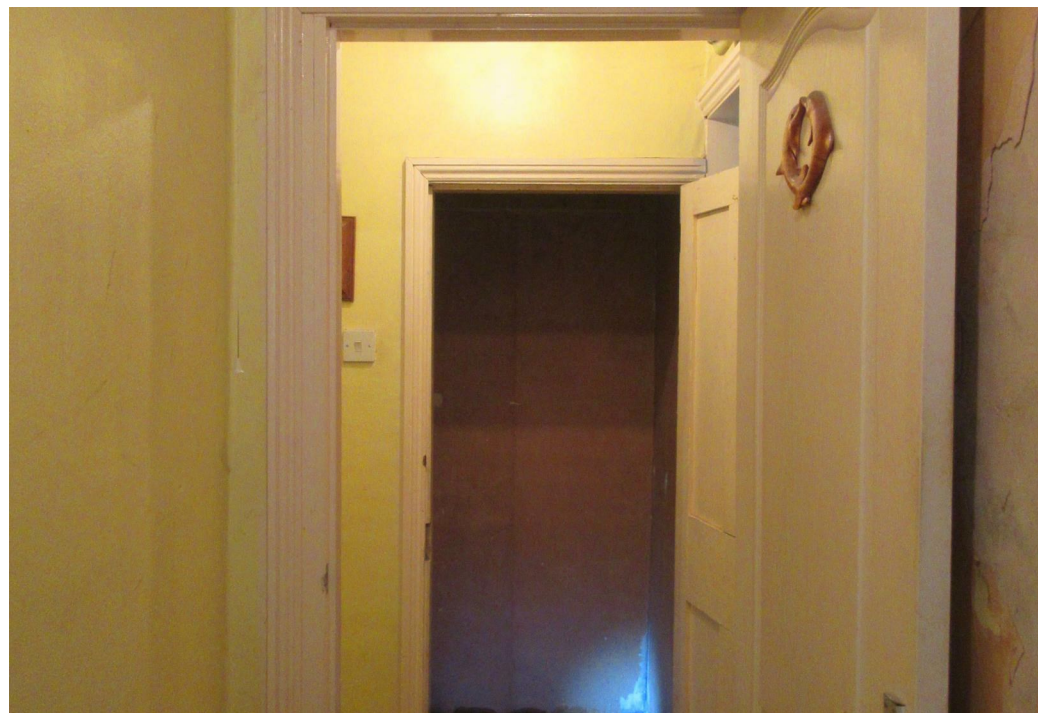
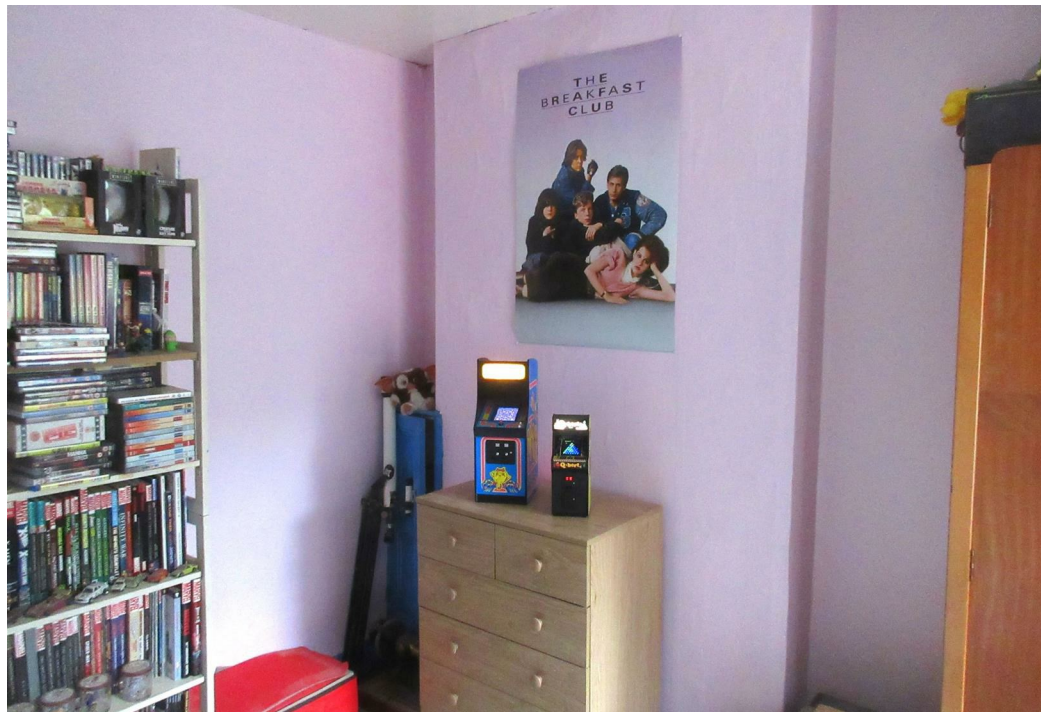




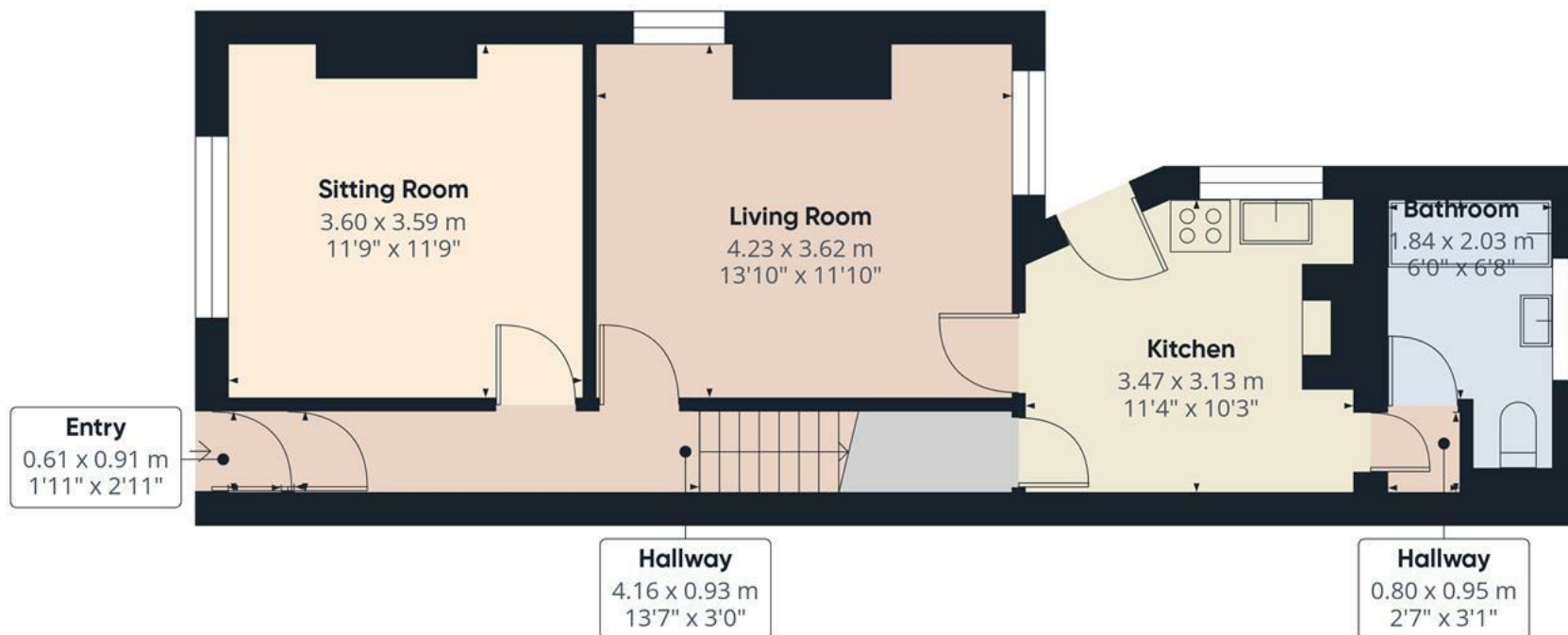












Approximate total area⁽¹⁾

49.8 m²

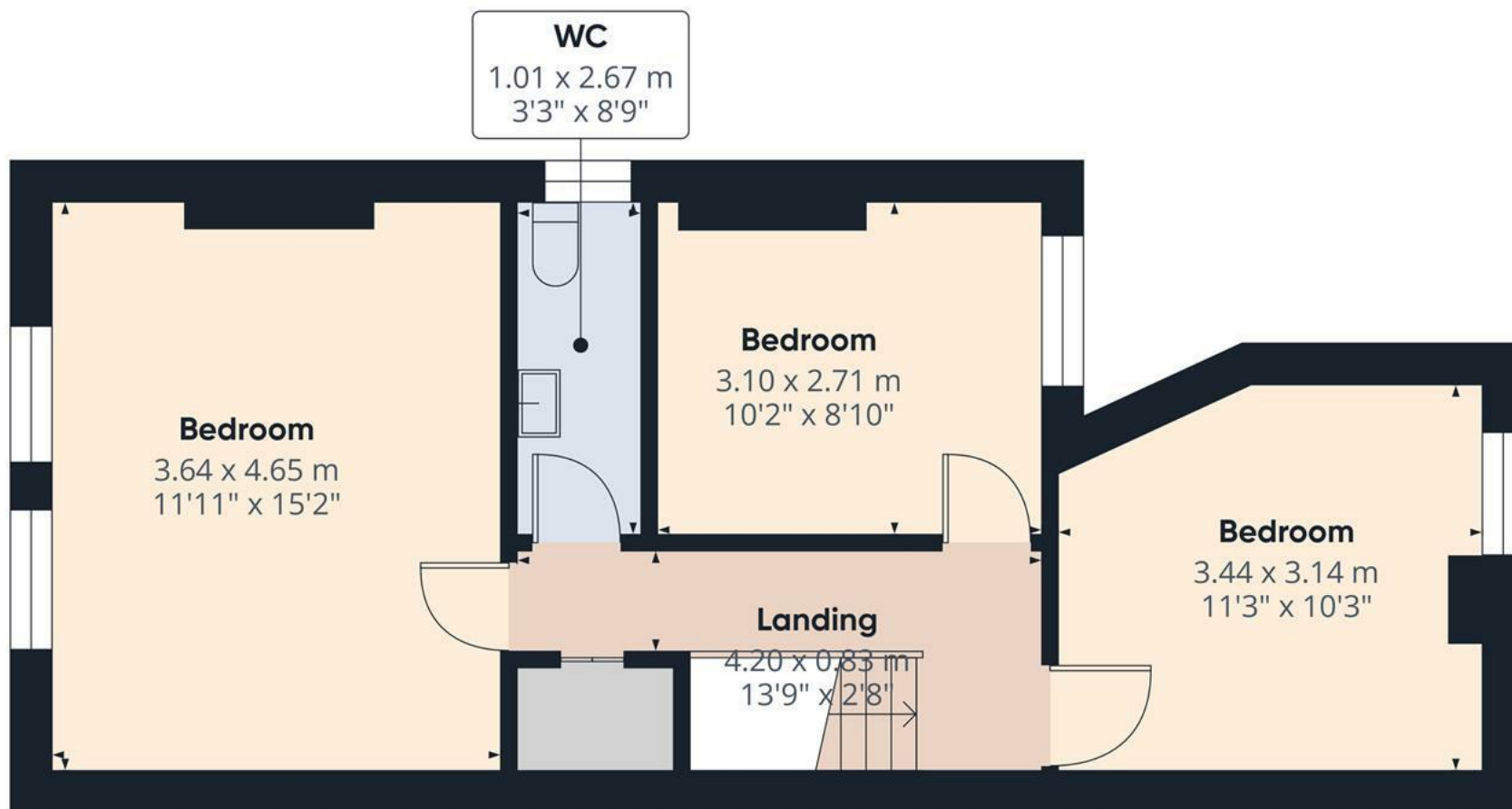
536 ft²

(1) Excluding balconies and terraces

Calculations reference the RICS IPMS 3C standard. Measurements are approximate and not to scale. This floor plan is intended for illustration only.

GIRAFFE360

Floor 0



Approximate total area⁽¹⁾
43.5 m²
469 ft²

(1) Excluding balconies and terraces

Calculations reference the RICS IPMS 3C standard. Measurements are approximate and not to scale. This floor plan is intended for illustration only.

GIRAFFE360

Floor 1

