







\*\*\*\* RECENTLY RENOVATED  
THREE BEDROOM STONE BUILT  
COTTAGE IN A HIGHLY  
REGARDED VILLAGE \*\*\*\* This  
stunning property offers an  
open plan kitchen with a living  
or dining space with log burner  
and door onto the garden,  
sitting room with feature  
fireplace, conservatory, guest  
cloakroom. The first floor offers  
the master bedrooms with en  
suite and the second floor  
offers two further bedrooms  
and a shower room. Enclosed  
mature garden. OFFERED FOR  
SALE WITH NO UPWARD CHAIN





### OPEN PLAN KITCHEN DINER

Cupboards and drawers with solid wood work surfaces and a Belfast style sink with mixer tap. Space for a range style cooker, integrated dishwasher, space for a fridge freezer. Stable door and window to the side.

### LIVING AREA

Feature log burner set in a beautiful fireplace, exposed stone wall, radiator and a door to the garden.

### INNER HALL

Stairs to the first floor and doors to -

### CLOAKROOM

Plumbing and space for a washing machine and door way to a low flush wc, wash hand basin, chrome ladder style radiator and a window.

### SITTING ROOM

Feature cast iron fireplace, storage cupboard, radiator and door onto the conservatory.

### CONSERVATORY

Windows and doors onto the garden.

### FIRST FLOOR LANDING

Stairs to the second floor and radiator.



### BEDROOM

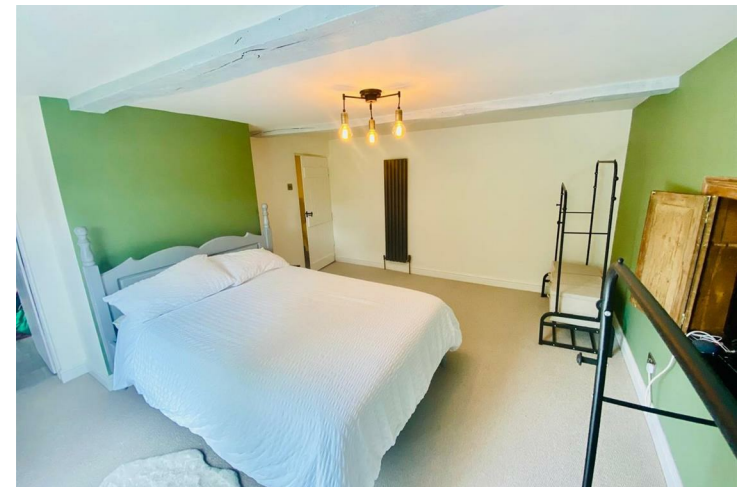
Cupboard perfect for housing a tv, radiator and window.

### EN SUITE

Panel enclosed Jacuzzi bath with a shower and shower screen, wash hand basin, low flush wc, radiator and window.

### SECOND FLOOR LANDING

Radiator and storage cupboard.











## BEDROOM

Window and radiator.

## BEDROOM

Window and radiator.

## SHOWER ROOM

Walk-in shower, vanity unit with wash hand basin and storage under, low flush wc, chrome ladder style radiator and a window.

## OUTSIDE

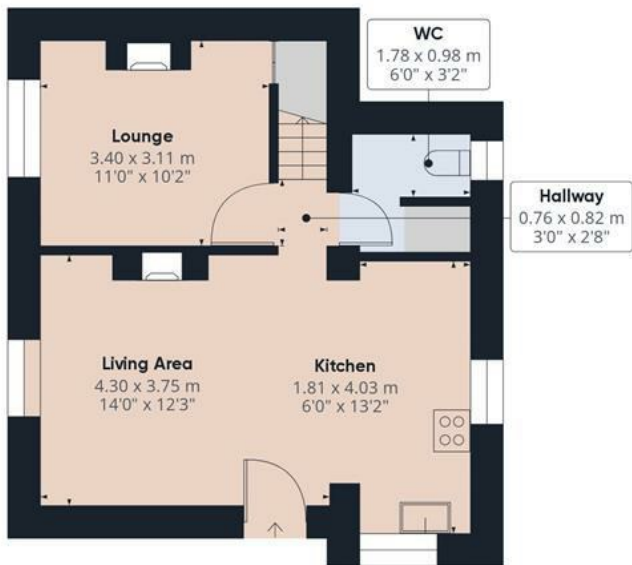
Enclosed garden with lawn, mature plants and shrubs, seating areas.



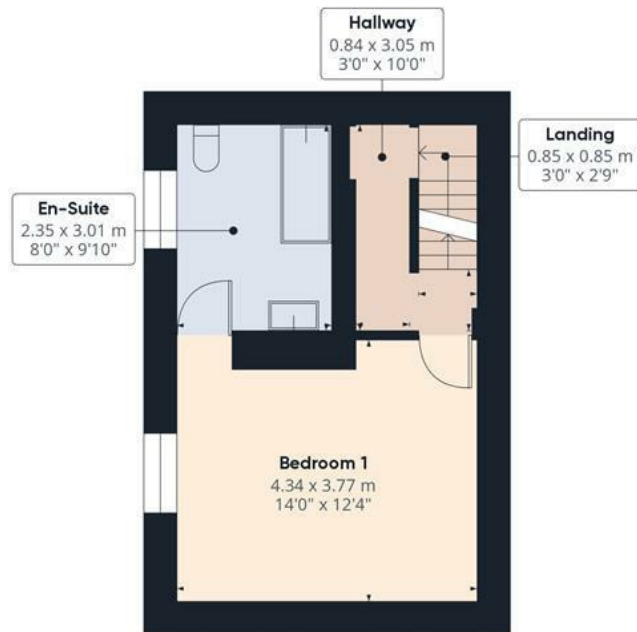




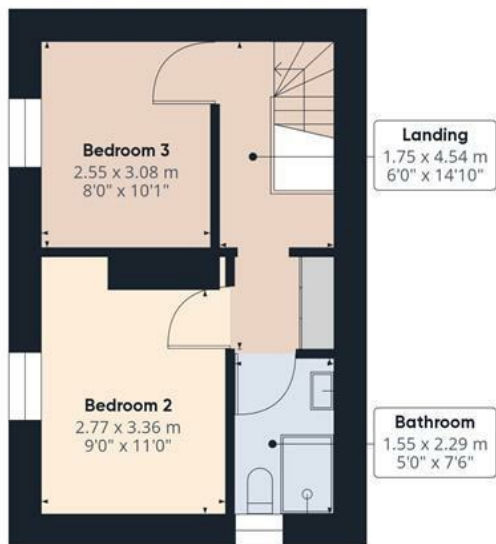




Floor 0



Floor 1



Floor 2



Approximate total area<sup>†</sup>

96.43 m<sup>2</sup>

1037.96 ft<sup>2</sup>

(1) Excluding balconies and terraces

While every attempt has been made to ensure accuracy, all measurements are approximate, not to scale. This floor plan is for illustrative purposes only.

GIRAFFE360



