







\*\*\*\* VIRTUAL TOUR \*\*\*\* PLOT 6 ONLY  
 TWO OF THE THIS DESIGN AVAILABLE  
 \*\*\*\* THREE BEDROOM END TOWN  
 HOUSE \*\*\*\* High specification architect  
 design small development of just 8  
 properties in the popular location  
 Albert Village. This property offers a  
 hall and guest cloakroom, open plan  
 living and dining area with fitted  
 kitchen and doors onto the garden. The  
 first floor offers three bedrooms, en suite  
 shower room and a family bathroom.  
 Enclosed garden and REAR PARKING.  
 The property benefits from Air Source  
 Heat Pumps (Mitsubishi Ecodan 5kw)  
 and upvc double glazed windows. Plot 6  
 is due to be ready to move into in April.





## HALL

Entrance door into the hall and guest cloakroom.

## CLOAKROOM

Low flush wc, wash hand basin and radiator.

## LOUNGE

Upvc double glazed window to the front, radiator and open through to -

## KITCHEN DINER

High specification fitted kitchen offering wall mounted, base and drawer units with work surfaces and sink and drainer unit. Fitted oven and hob, integrated dishwasher, appliance spaces. Upvc double glazed window and doors onto the garden, radiator and a door to the cloakroom.

## FIRST FLOOR LANDING

Loft access and doors to -

## BEDROOM 1

Upvc double glazed window, radiator and a door to -

## EN SUITE

Shower, low flush wc, wash hand basin, radiator and skylight window.

## BEDROOM 2

Upvc double glazed window and radiator.

## BEDROOM 3

Upvc double glazed window and radiator.

## BATHROOM

Panel enclosed bath, wash hand basin, low flush wc, radiator and upvc double glazed window.

## OUTSIDE



Enclosed garden with patio and lawn. Rear parking.









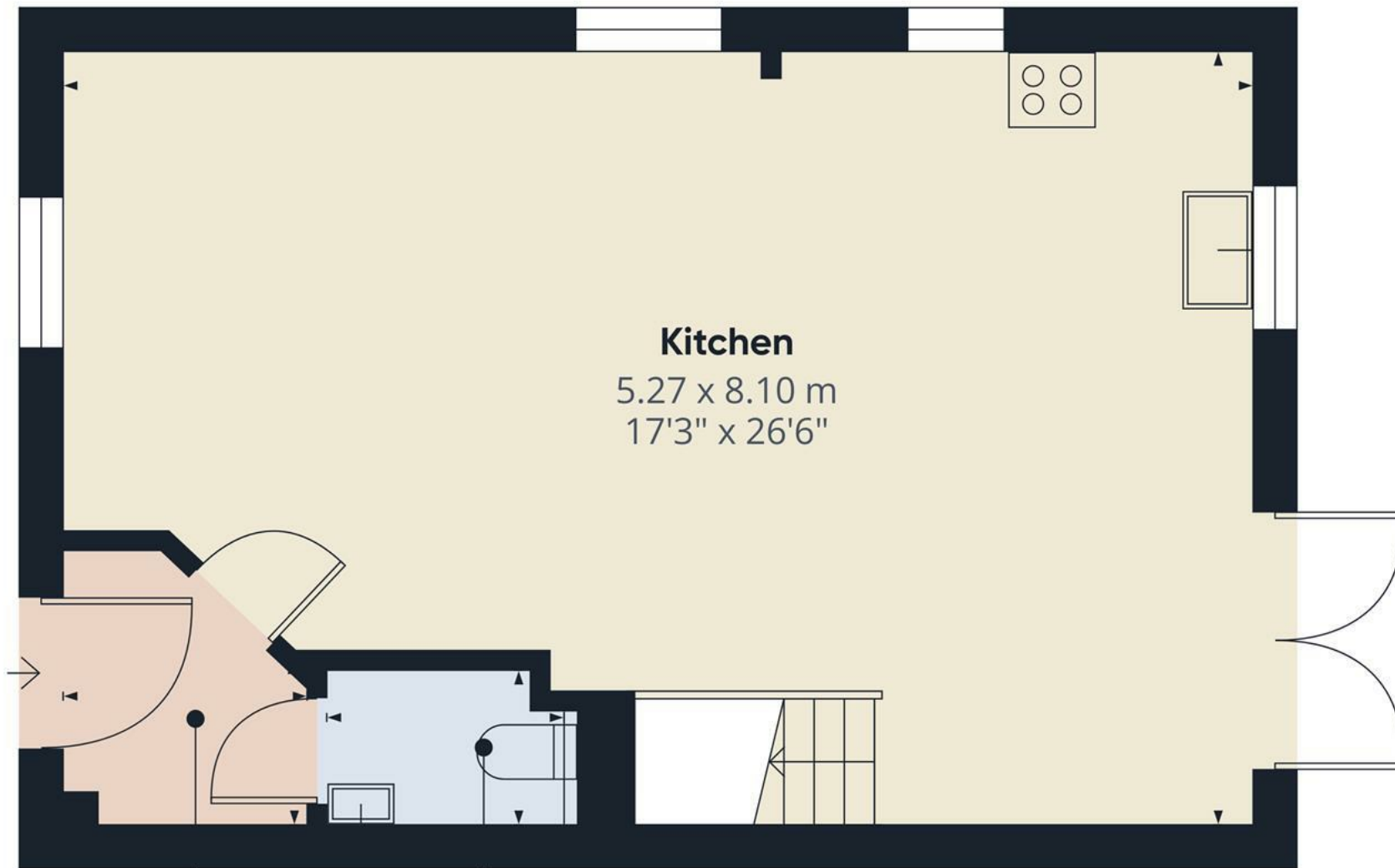












Approximate total area<sup>(1)</sup>

42.6 m<sup>2</sup>

458 ft<sup>2</sup>

(1) Excluding balconies and terraces.

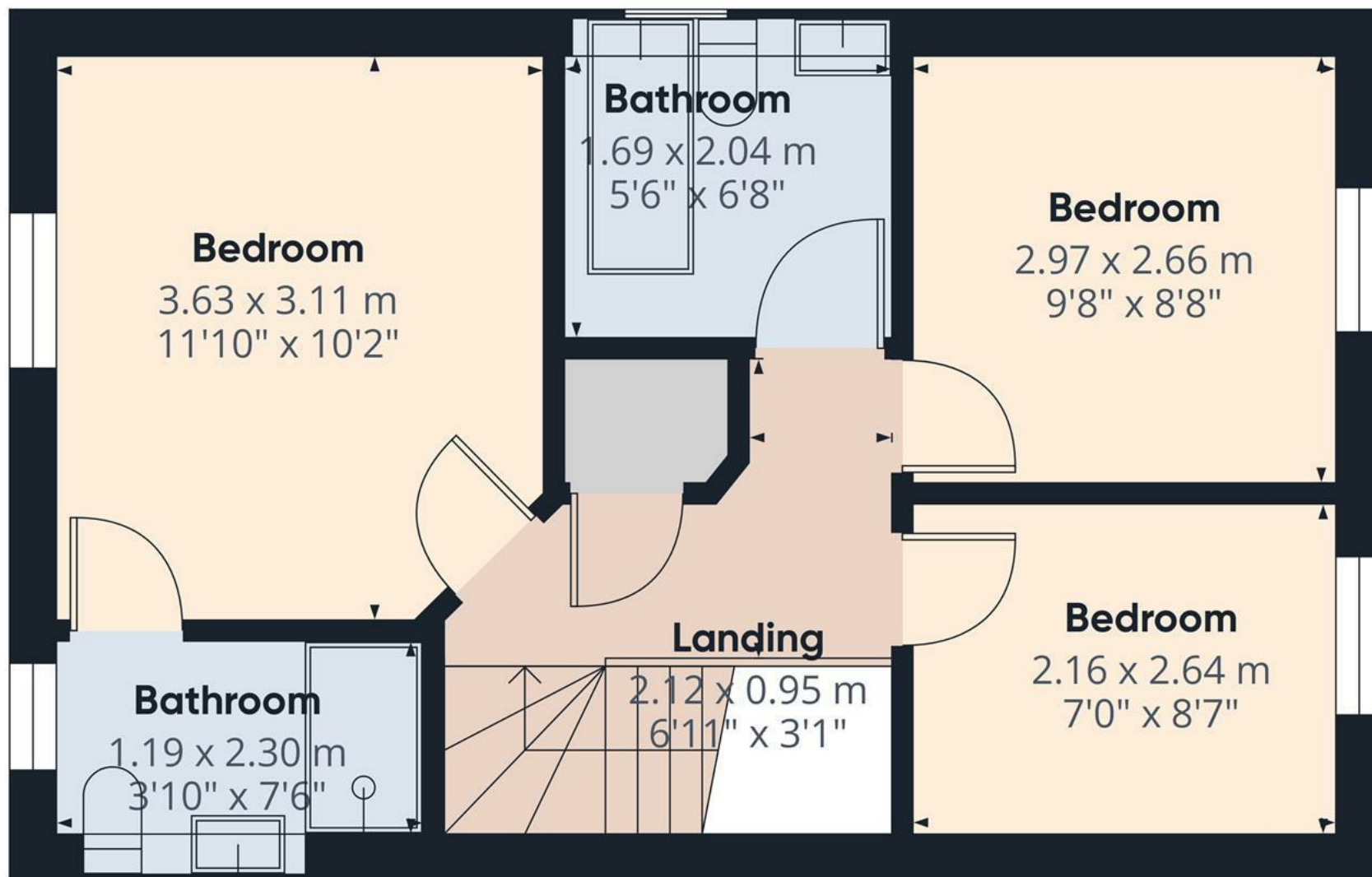
While every attempt has been made to ensure accuracy, all measurements are approximate, not to scale. This floor plan is for illustrative purposes only.

Calculations were based on RICS IPMS 3C standard. Please note that calculations were adjusted by a third party and therefore may not comply with RICS IPMS 3C.

GIRAFFE360

Floor 0





Approximate total area<sup>(1)</sup>

36.5 m<sup>2</sup>

393 ft<sup>2</sup>

(1) Excluding balconies and terraces.

While every attempt has been made to ensure accuracy, all measurements are approximate, not to scale. This floor plan is for illustrative purposes only.

Calculations were based on RICS IPMS 3C standard. Please note that calculations were adjusted by a third party and therefore may not comply with RICS IPMS 3C.

GIRAFFE360

Floor 1

