





A superb four bedroom semi detached property, having a versatile accommodation, situated within a popular location having access to a range of local amenities and transport links. The property benefits from four well proportioned bedrooms, fully fitted kitchen diner, integral garage and a driveway providing parking facility. Viewing is highly recommended strictly via appointment only.



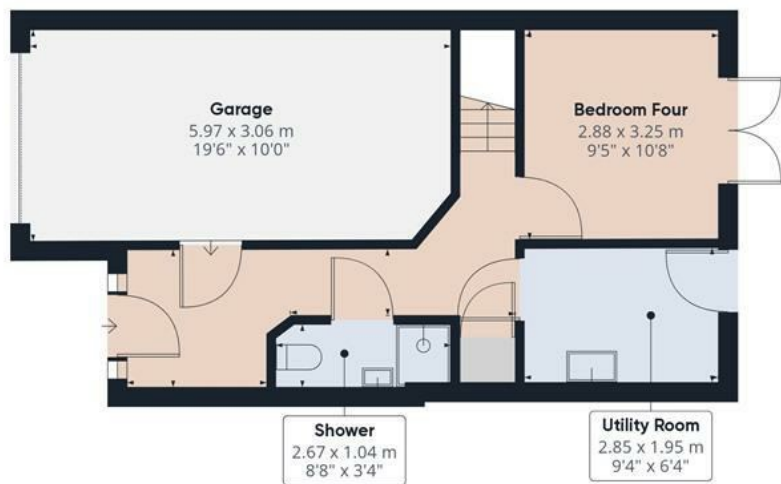












Floor 0



Floor 1



Floor 2

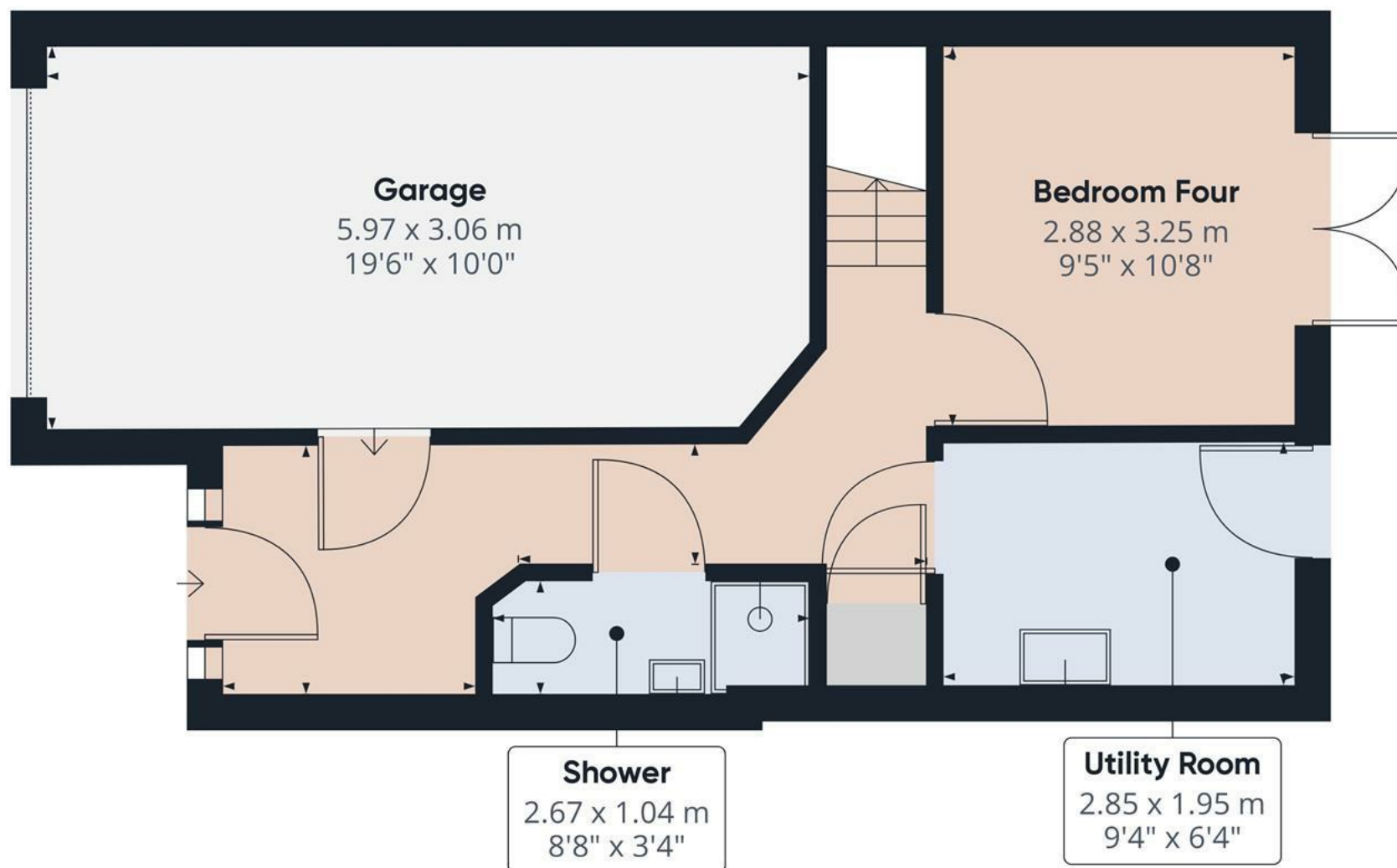


Approximate total area⁽¹⁾
135.53 m²
1458.79 ft²

Excluding balconies and terraces

While every attempt has been made to ensure accuracy, all measurements are approximate, not to scale. This floor plan is for illustrative purposes only.

GIRAFFE360



Approximate total area^m

48.55 m²

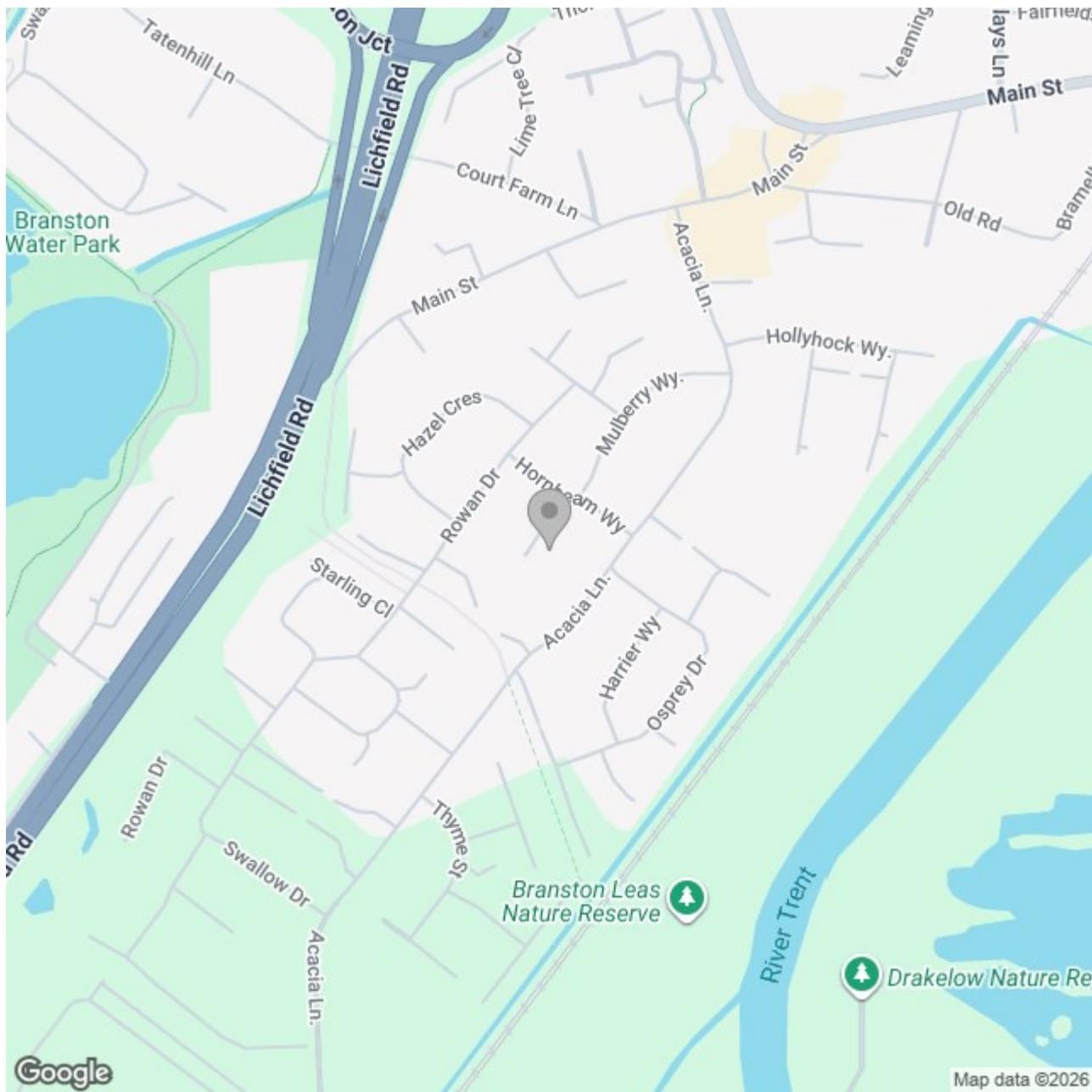
522.59 ft²

Excluding balconies and terraces

While every attempt has been made to ensure accuracy, all measurements are approximate, not to scale. This floor plan is for illustrative purposes only.

GIRAFFE360

Floor 0



Energy Efficiency Rating		
	Current	Potential
Very energy efficient - lower running costs		
(92 plus) A		94
(81-91) B	83	
(69-80) C		
(55-68) D		
(39-54) E		
(21-38) F		
(1-20) G		
Not energy efficient - higher running costs		
England & Wales	EU Directive 2002/91/EC 