





**** 2019 MODEL IN
STUNNING CONDITION ****
OVER 55s **** Perfect
condition and benefitting
from upvc double glazing
and a gas heating system. In
brief the property offers a
fitted kitchen with built in
appliances, dining room with
double doors onto an
enclosed patio and a good
size lounge. Double
bedroom with dressing room
and a shower room.
Gardens and a long drive.
Offered for sale with no
upward chain.



 **ABODE**
SALES & LETTINGS

KITCHEN

9'7 x 8'6

Fitted wall mounted, base and drawer units with work surfaces and a sink and drainer unit. Fitted gas hob and electric oven, integrated fridge freezer and washing machine. Sky light window and open through to the dining room.

DINING ROOM

10'6 x 10'0

Upvc double glazed doors onto the an enclosed paved patio, radiator, storage cupboard, door to the bedrooms and open through to the lounge.

LOUNGE

19'9 x 11'3

Feature electric fireplace, two radiators, three upvc double glazed windows.

BEDROOM

13'9 x 10'9

Upvc double glazed window and a radiator, drawers and matching bedside cabinets. Doors to the dressing room and shower room.

DRESSING ROOM

Drawers, shelves and hanging.

SHOWER ROOM

Good size shower cubicle, wash hand basins with cupboard under, low flush wc, radiator and upvc double glazed window.

OUTSIDE

Side lawn and an enclosed balcony sale paved patio with rough iron fencing and doors into the dining room. The other side offers a Long drive down to a shed included in the sale.

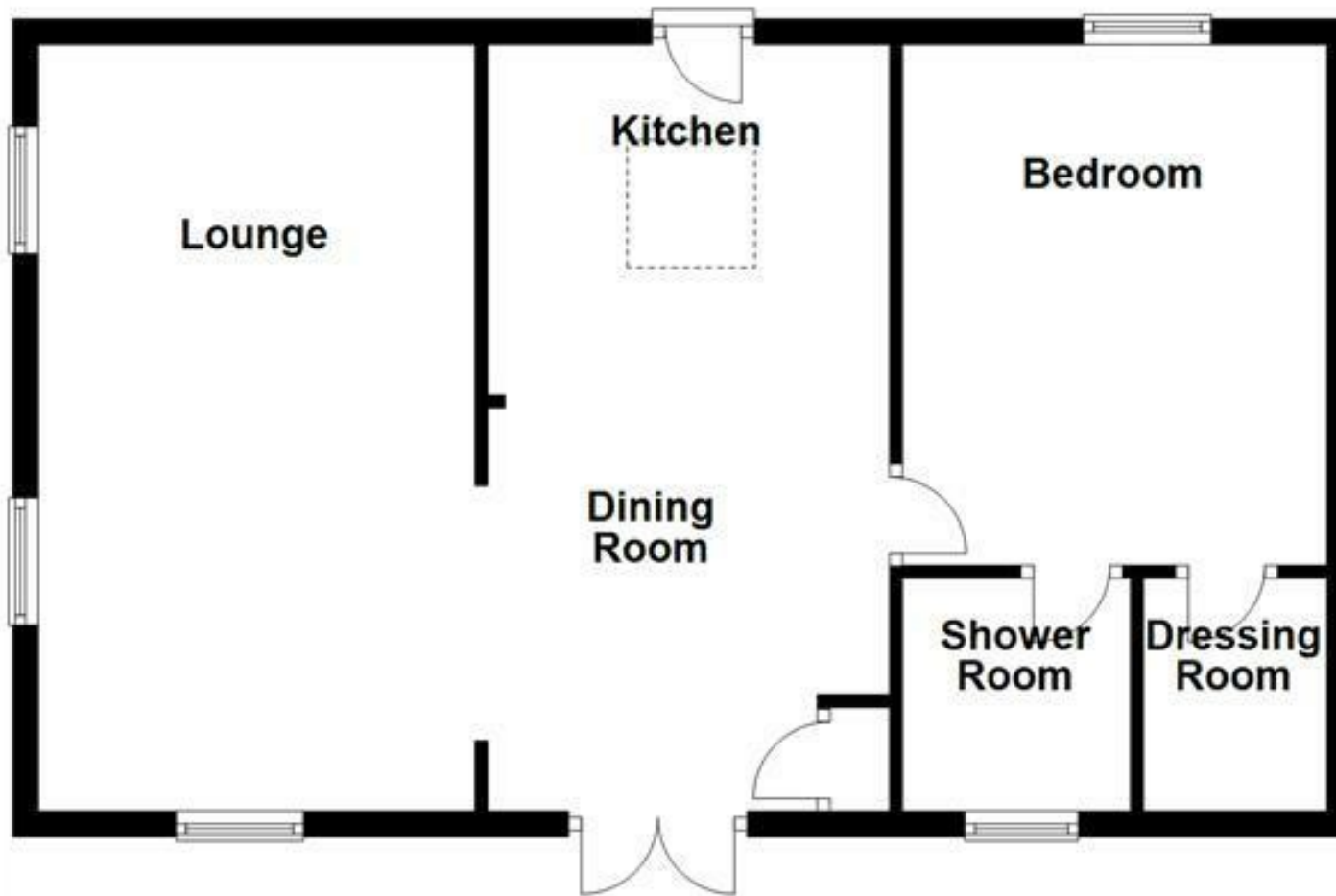








Ground Floor



Please use as a guide to layout only. They are not intended to be to scale.
Property of Abode Anderson-Dixon, Burton-Uttoxetter-Ashbourne
Plan produced using PlanUp.

