





**** FULLY RENOVATED
CHARACTER PROPERTY IN THE
HEART OF ASHBOURNE ****
CURRENTLY USED AS HOLIDAY
LET **** Full of character and
charm this two bedroom
detached property offers
unique living with the ground
floor offering an entrance hall,
shower room and master
bedroom, the first floor offers
bedroom 2 and open plan living
with a sitting area, dining area
and fitted kitchen, doors onto
the garden and exposed beams
in the vaulted ceiling. Secluded
enclosed paved garden perfect
for entertaining and alfresco
dining. OFFERED FOR SALE
WITH NO UPWARD CHAIN ****



HALL

Entrance door into the hall with stairs to the first floor, under stairs storage and doors to -

BEDROOM 1

Fitted wardrobes, radiator, upvc double glazed window.

SHOWER ROOM

Walk-in shower with a rainfall shower and hand held shower, vanity sink unit with wash hand basin and storage under, low flush wc and chrome ladder style radiator.

FIRST FLOOR

OPEN PLAN LIVING

Vaulted ceiling with exposed beams and two velux windows. Two upvc double glazed windows to the front and window and double doors onto the garden, two radiators. Fitted kitchen area with oak work surfaces and a breakfast bar. Sink unit, fitted electric double oven and a gas hob with extractor, integrated fridge and washing machine.

BEDROOM 2

Storage cupboard, radiator and upvc double glazed window to the front.

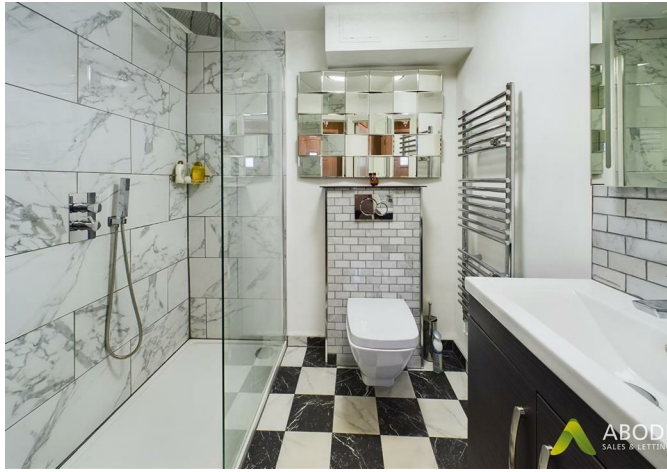
OUTSIDE

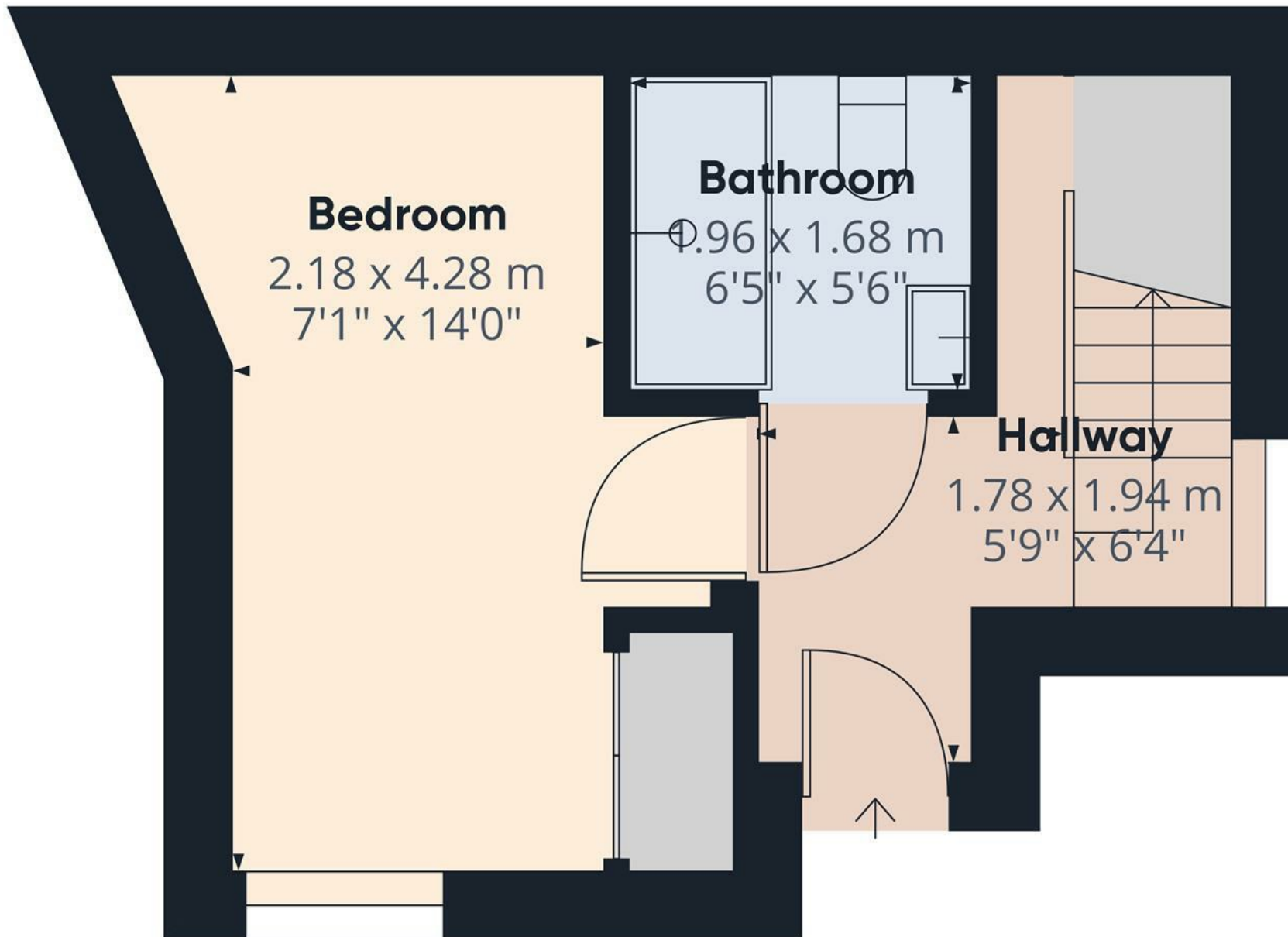
Secluded southerly facing paved garden offering great entertaining space and a side gate.











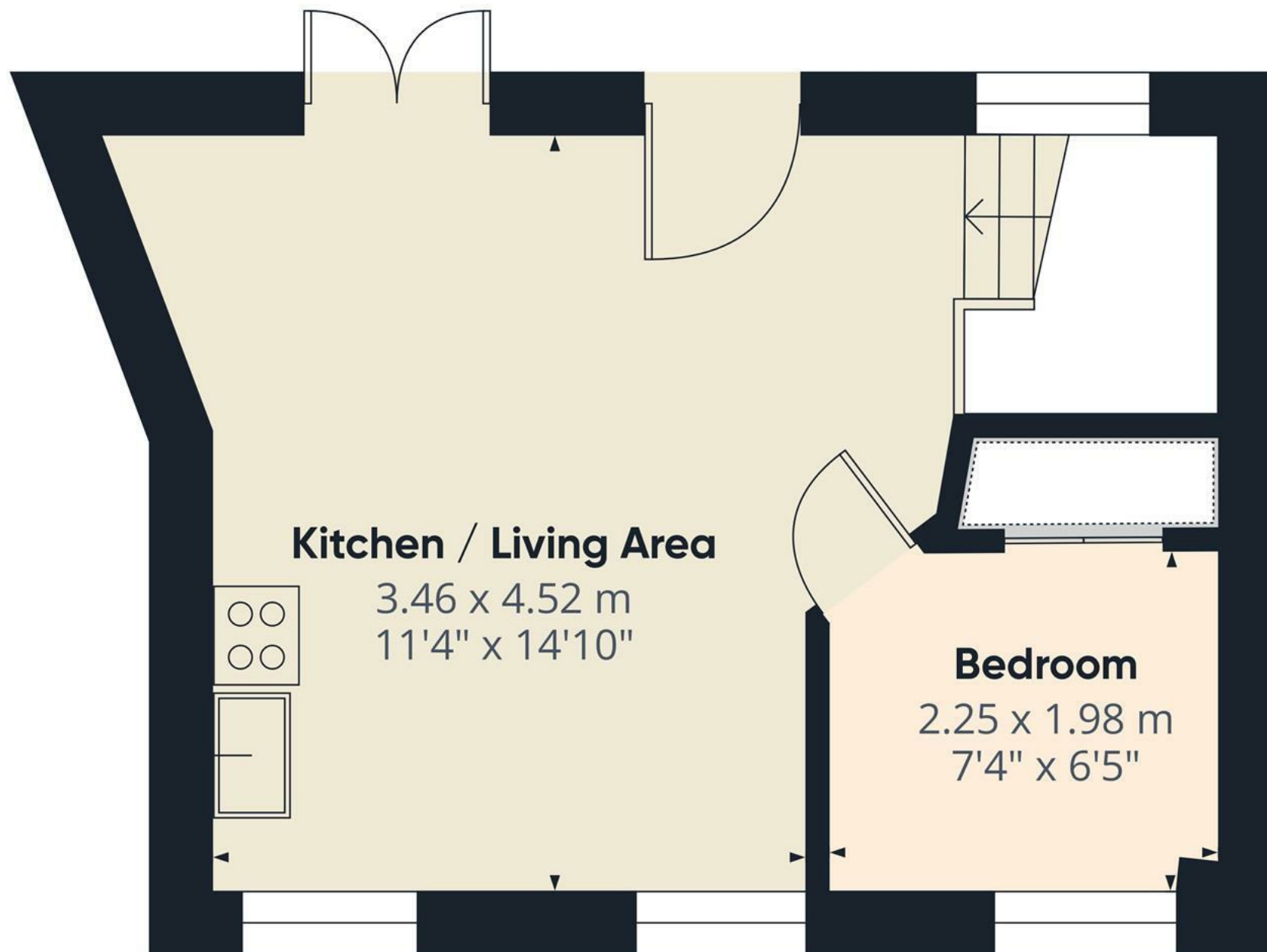
Approximate total area⁽¹⁾
21.47 m²
231.13 ft²

(1) Excluding balconies and terraces

While every attempt has been made to ensure accuracy, all measurements are approximate, not to scale. This floor plan is for illustrative purposes only.

GIRAFFE360

Floor 0



Approximate total area⁽¹⁾

23.79 m²

256.11 ft²

Kitchen / Living Area

3.46 x 4.52 m

11'4" x 14'10"

Bedroom

2.25 x 1.98 m

7'4" x 6'5"

(1) Excluding balconies and terraces.

While every attempt has been made to ensure accuracy, all measurements are approximate, not to scale. This floor plan is for illustrative purposes only.

GIRAFFE360

Floor 1

