





Auction 27th June 2024 with SDL Property Auctions

**** EXTENSIVE PLOT WITH LARGE GARDENS TO THE REAR AND SIDE OF THE PROPERTY WITH COUNTRYSIDE VIEWS **** Abode are delighted to bring to the market this unique character semi detached property set in a stunning position. The property offers charm and retains many original features that must be viewed to be appreciated. In brief the property offers a porch and hall, lounge and a good size dining room with patio doors onto the garden. fitted dining kitchen and a utility room. Four bedrooms in total, ground floor bathroom and a first floor shower room. Large lawns in a number of sections to the rear and side of the property. Mature trees, shrubs, and bushes, private drive down to ample parking and turning, garage, wood store/workshop and greenhouses. A VIEWING APPOINTMENT IS HIGHLY RECOMMENDED.



PORCH

Door into the porch with a door into the lounge.

LOUNGE

19'9 x 13'6

Feature log burner set within an exposed brick wall, original beams, two windows, two radiators and a door to the stairs and kitchen.

KITCHEN

28'0 x 11'6

Fitted wall mounted, base and drawer units with granite work surfaces and a sink unit with mixer tap. Space for a range style cooker with fitted extractor hood, integrated fridge freezer and dishwasher. Four windows, radiator, tiled floor and a pantry.

INNER HALL

Door to the dining room, shower room and to the hall.

DINING ROOM

15'3 x 9'9

Feature inglenook style fireplace with an open fire, exposed beams. Two windows and patio doors onto the garden, radiator, door to the stairs and an under stairs store cupboard.

BATHROOM

8'5 x 7'2

Bath with a shower and shower screen, low flush wc, wash hand basin, radiator, roof light window.

HALL

Door to the garden, window and a door to the utility room.



UTILITY ROOM

7'11 x 7'7

Plumbing and space for a washing machine, further appliance spaces, window.

FIRST FLOOR STAIR CASE FROM DINING ROOM

Door into -

BEDROOM

18'10 x 14'10

Storage cupboard, windows and radiator.







FIRST FLOOR STAIR CASE FROM LOUNGE

Stairs to the second floor, window and doors to -

BEDROOM

11'2 x 10'1

Double store cupboard, radiator and window, door into -

BEDROOM

18'7 x 11'11

Wardrobes, airing cupboard, two windows, radiator.

SHOWER ROOM

8'6 x 6'9

Enclosed double shower, low flush wc, wash hand basin, radiator and window.



SECOND FLOOR

BEDROOM

14'3 x 11'3

Window and radiator.

OUTSIDE

Located on an extensive plot approached via a private drive. To the left of the drive there are 2 large lawn gardens with countryside views. At the end of the drive is parking, the large garage, workshop/wood store and green house. To the left hand side of the garages there is another garden mainly laid to lawn and a brick outbuilding/summer house. The property is accessed from the parking area with more lawn gardens with mature shrubs and bushes, seating areas and more countryside views.



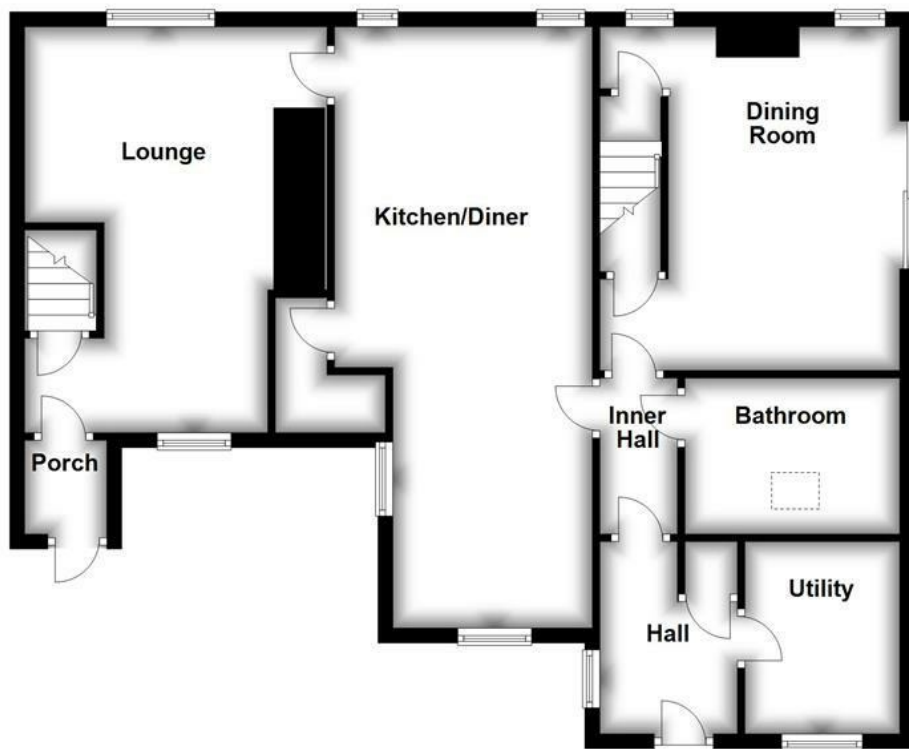




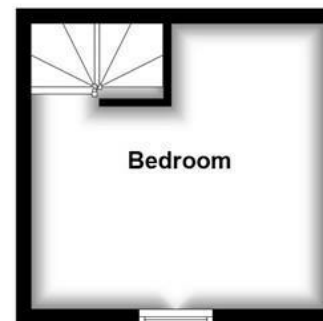




Ground Floor



Second Floor



First Floor

