





****360 VIRTUAL TOUR**** A stunning four bedroom detached property, situated within the desirable village of Stretton, having access to a range of local amenities and transport links. The property benefits from a generous plot having a large driveway providing parking facility, two reception rooms, a beautifully appointed kitchen opening into a dining room, four well proportioned bedrooms with the master having an en-suite shower room, solar panels and a downstairs WC/cloaks. Viewing is highly recommended strictly via appointment only.



Accommodation

Entrance hallway

With central heating radiator, stairs rising to the first floor and doors leading off to:

WC/cloaks

With a wash hand basin, low level wc, double glazed window to the front and a central heating radiator.

Living Room

With two central heating radiators, log burning stove with Adam style surround and marble hearth, double glazed upvc window to the front elevation and doors leading off to:

Kitchen

With a selection of matching wall and base units having a solid wood preparation work surface with one and a half bowl sink with mixer tap and drainer, integrated dishwasher, full height fridge and full height freezer, electric oven and electric grill, five ring induction hob with extractor over, double glazed window to the rear elevation and an opening leading to:

Dining room

With central heating radiator and French doors leading out onto the garden.

First floor landing

With an airing cupboard, loft hatch with pull down ladder and doors leading off to:

Master bedroom

With central heating radiator, double glazed window



to the front elevation, a selection of fitted wardrobes and drawers and a door leading to the en-suite shower room.

En-suite shower room

With a three piece suite comprising: wash hand basin with mixer tap, shower cubicle with shower over, recessed spotlighting and central heating radiator, double glazed window to the rear elevation.

Family bathroom

With a three piece suite comprising: low level wc, wash







hand basin with mixer tap, bath with mixer tap and electric shower over, central heating radiator, recessed spotlighting and double glazed window to the rear elevation.

Bedroom Two

With central heating radiator, double glazed window to the rear elevation and a built in wardrobe.

Bedroom Three

With central heating radiator, built in wardrobe and a double glazed window to the front elevation.

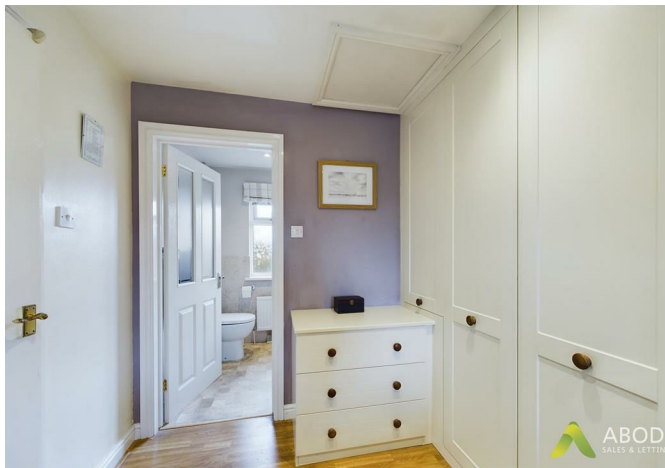


Bedroom four

With central heating radiator and a double glazed window to the front elevation.

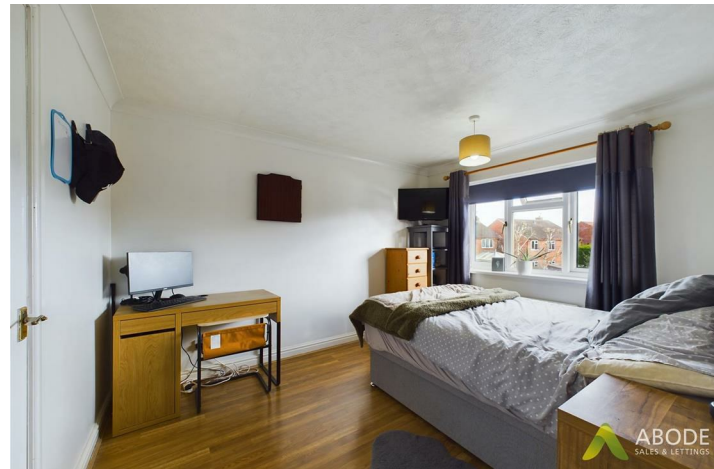
Outside

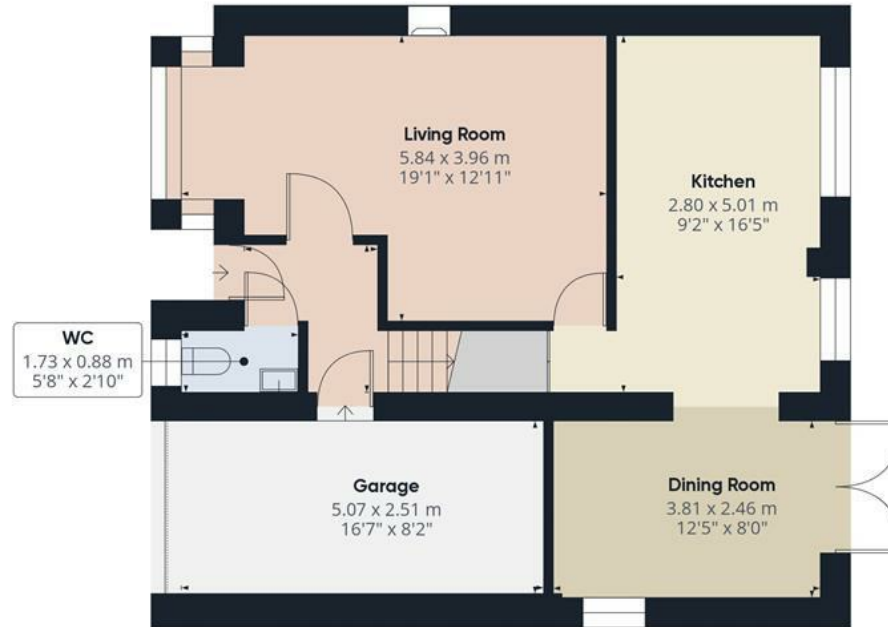
The outside of the property to the front elevation offers a generous driveway providing parking facility, leading to the integral garage and front entrance door. The rear elevation offers a patio area ideal for seating, laid to lawn garden, summer house and pergola, all of which is enclosed via timber fencing.











Floor 0



Floor 1

Approximate total area⁽¹⁾

120.44 m²
1296.38 ft²

Reduced headroom

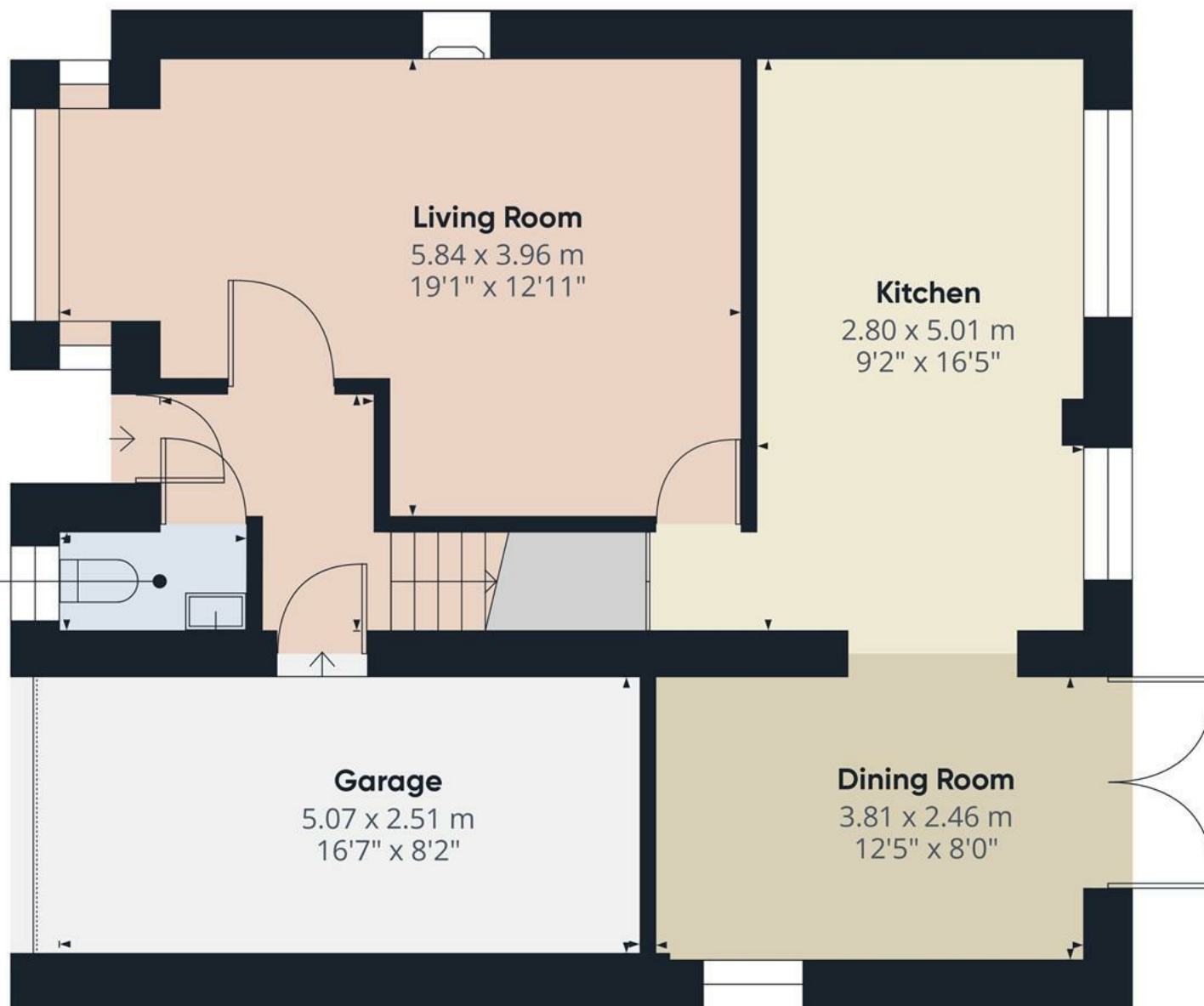
2.26 m²
24.3 ft²

(1) Excluding balconies and terraces.

⊞ Reduced headroom
(below 1.5m/4.92ft)

While every attempt has been made to ensure accuracy, all measurements are approximate, not to scale. This floor plan is for illustrative purposes only.

GIRAFFE360



WC
1.73 x 0.88 m
5'8" x 2'10"

Living Room
5.84 x 3.96 m
19'1" x 12'11"

Kitchen
2.80 x 5.01 m
9'2" x 16'5"

Garage
5.07 x 2.51 m
16'7" x 8'2"

Dining Room
3.81 x 2.46 m
12'5" x 8'0"

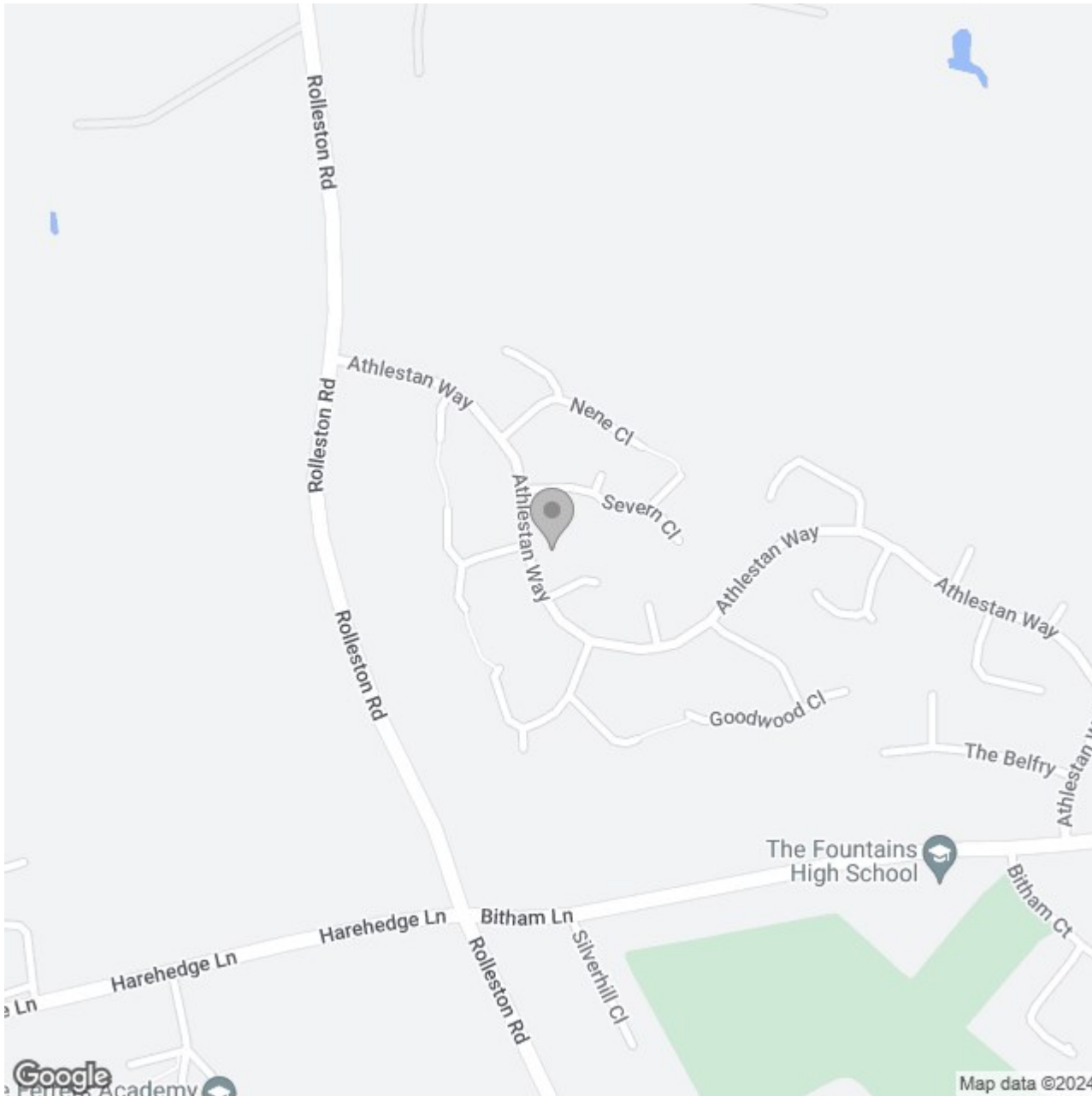
Approximate total area⁽¹⁾
63.97 m²
688.62 ft²

(1) Excluding balconies and terraces.

While every attempt has been made to ensure accuracy, all measurements are approximate, not to scale. This floor plan is for illustrative purposes only.

GIRAFFE360

Floor 0



Energy Efficiency Rating

	Current	Potential
<i>Very energy efficient - lower running costs</i>		
(92 plus) A		
(81-91) B		83
(69-80) C	68	
(55-68) D		
(39-54) E		
(21-38) F		
(1-20) G		
<i>Not energy efficient - higher running costs</i>		
England & Wales	EU Directive 2002/91/EC	