





**** EXTENDED AND FULLY MODERNISED
**** COUNTRYSIDE VIEWS ****

Beautifully presented THREE bedroom property in immaculate condition with a stunning dining kitchen with doors onto the garden. The property benefits from upvc double glazing a new gas central heating system and in brief offers a hall with utility storage cupboard, fitted dining kitchen with built in appliances. Lounge with dining area, family/study area and two double bedrooms on the ground floor. The ground floor bathroom offers a bath and large shower, the first floor offers a cloakroom/wc and the master bedroom with Juliet balcony. Landscaped gardens and a drive. INTERNAL VIEWING IS HIGHLY RECOMMENDED.

<https://tour.giraffe360.com/falb359955244>



 **ABODE**
SALES & LETTINGS

ENTRANCE HALL

Entrance door into the hall with double utility storage cupboard with plumbing for a washing machine.

FAMILY/STUDY AREA

Upvc double glazed window to the front, radiator and spiral staircase to the first floor.

DINING KITCHEN

22'1 x 11'5

New fitted wall mounted, base and drawer units with work surfaces and a breakfast bar. Sink and drainer with a mixer tap, fitted electric oven and hob, wine cooker, space for a fridge freezer. Sky light window, radiator and upvc double glazed double doors onto the garden.

REAR HALL

Upvc double glazed window to the rear, double doors to the lounge/diner and open through to the inner hall.

LOUNGE DINER

21'1 x 10'5

Feature recessed fireplace with beamed mantle, radiator and upvc double glazed patio doors onto the garden.

INNER HALL

Open though to the family/study area.



BATHROOM

15'10 x 5'4

Walk-in shower and a bath, wash hand basin, low flush wc, sky light window, modern radiator and fitted cupboard.

BEDROOM

11'6 x 10'7

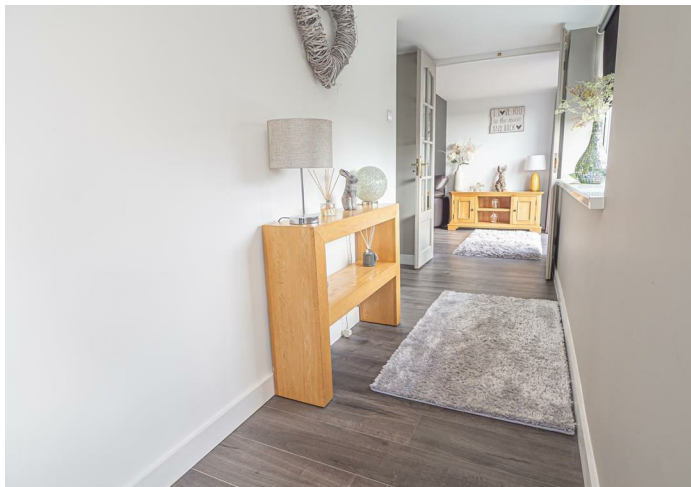
Upvc double glazed window to the front and a radiator.

BEDROOM

10'8 x 8'4

Upvc double glazed window to the front and a radiator.







FIRST FLOOR

Storage cupboard and doors to -

MASTER BEDROOM

17'6 x 10'5

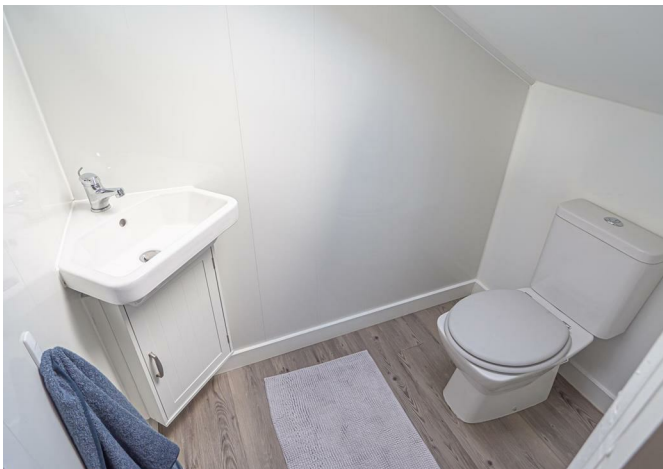
Eaves storage, radiator, sky light windows and Juliet balcony.

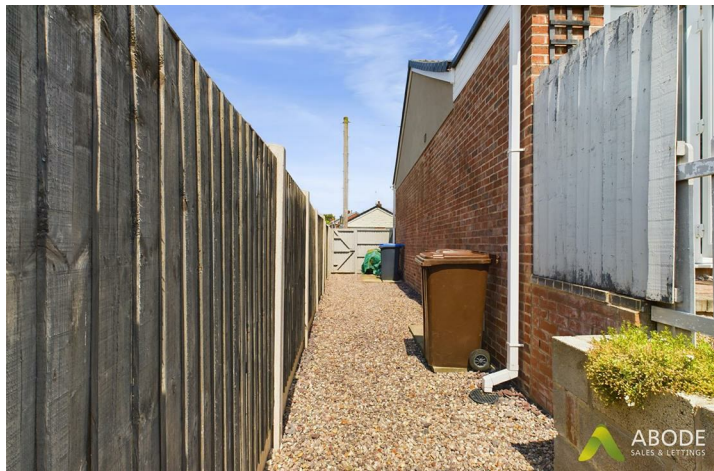
CLOAKROOM/WC

Low flush wc, wash hand basin and sky light window.

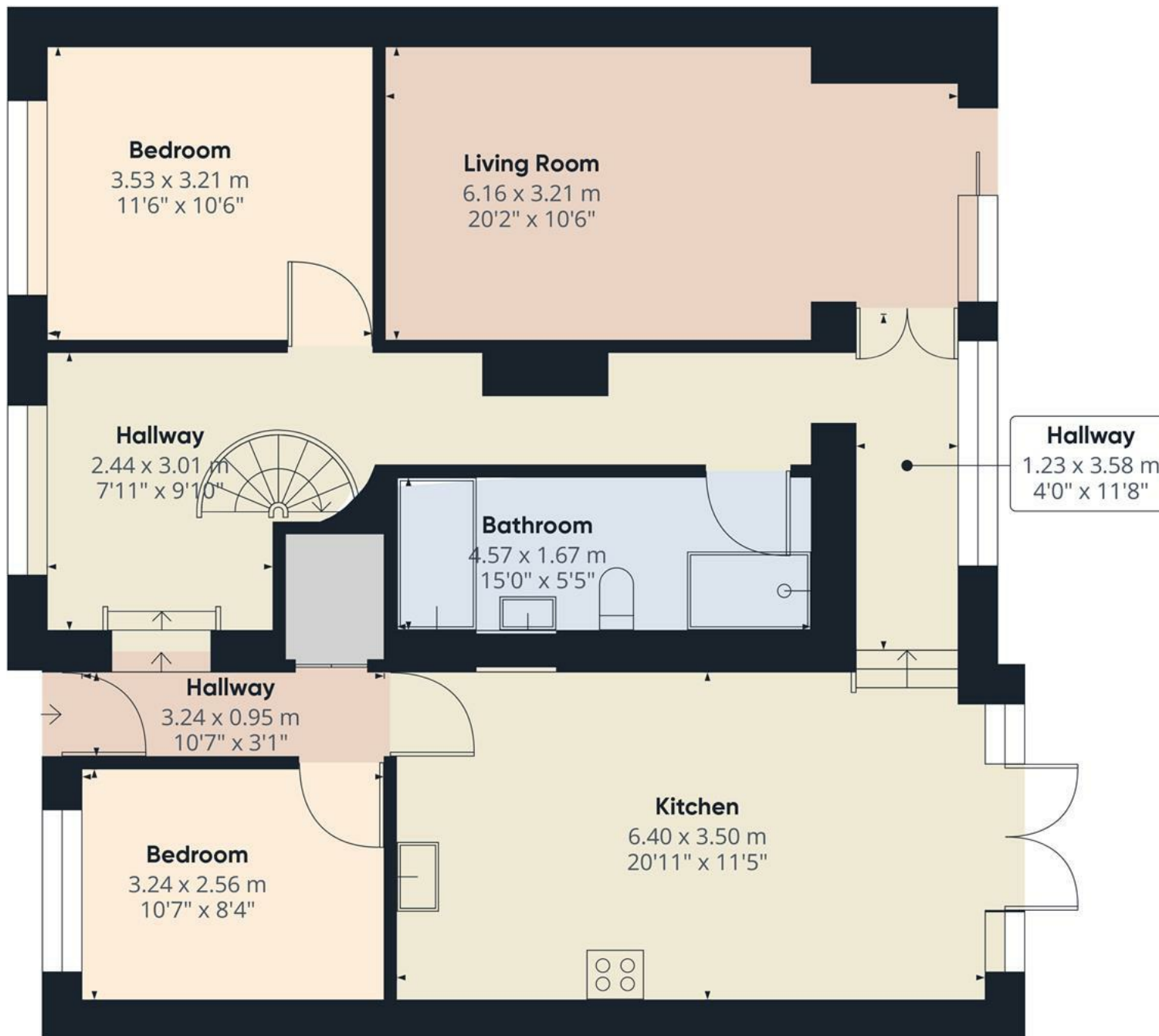
OUTSIDE

Front drive for two cars. Enclosed rear garden offering a block paved patio areas, lawn, pebbled area with shrubs and a decked patio with pergola. Side storage area and garden shed. Outside electric point and tap.









Approximate total area⁽¹⁾

95.24 m²
1025.17 ft²

Reduced headroom

10.46 m²
112.62 ft²

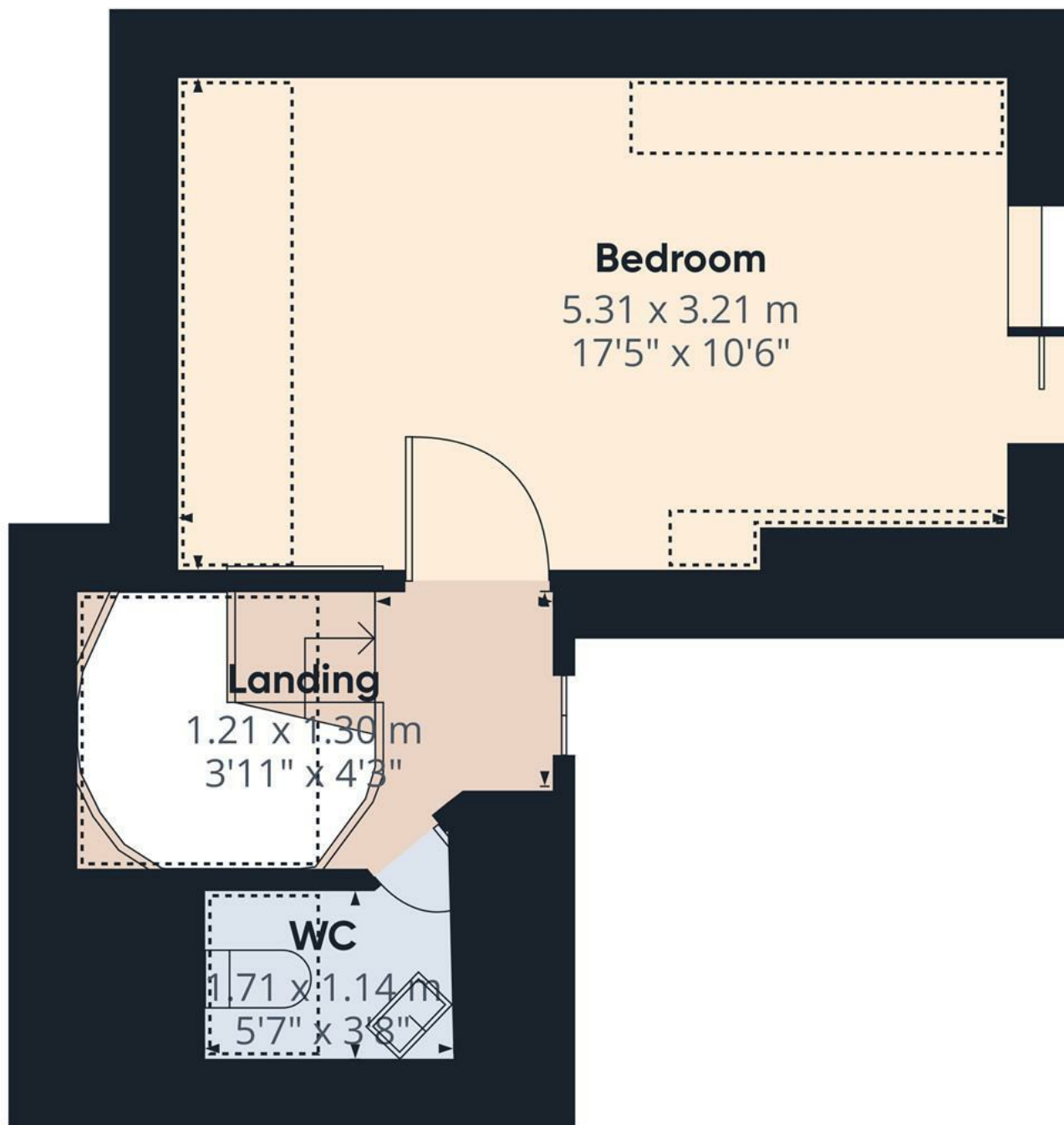
(1) Excluding balconies and terraces

Reduced headroom
(below 1.5m/4.92ft)

While every attempt has been made to ensure accuracy, all measurements are approximate, not to scale. This floor plan is for illustrative purposes only.

GIRAFFE360

Floor 0



Floor 1

Approximate total area⁽¹⁾

21.13 m²
227.41 ft²

Reduced headroom

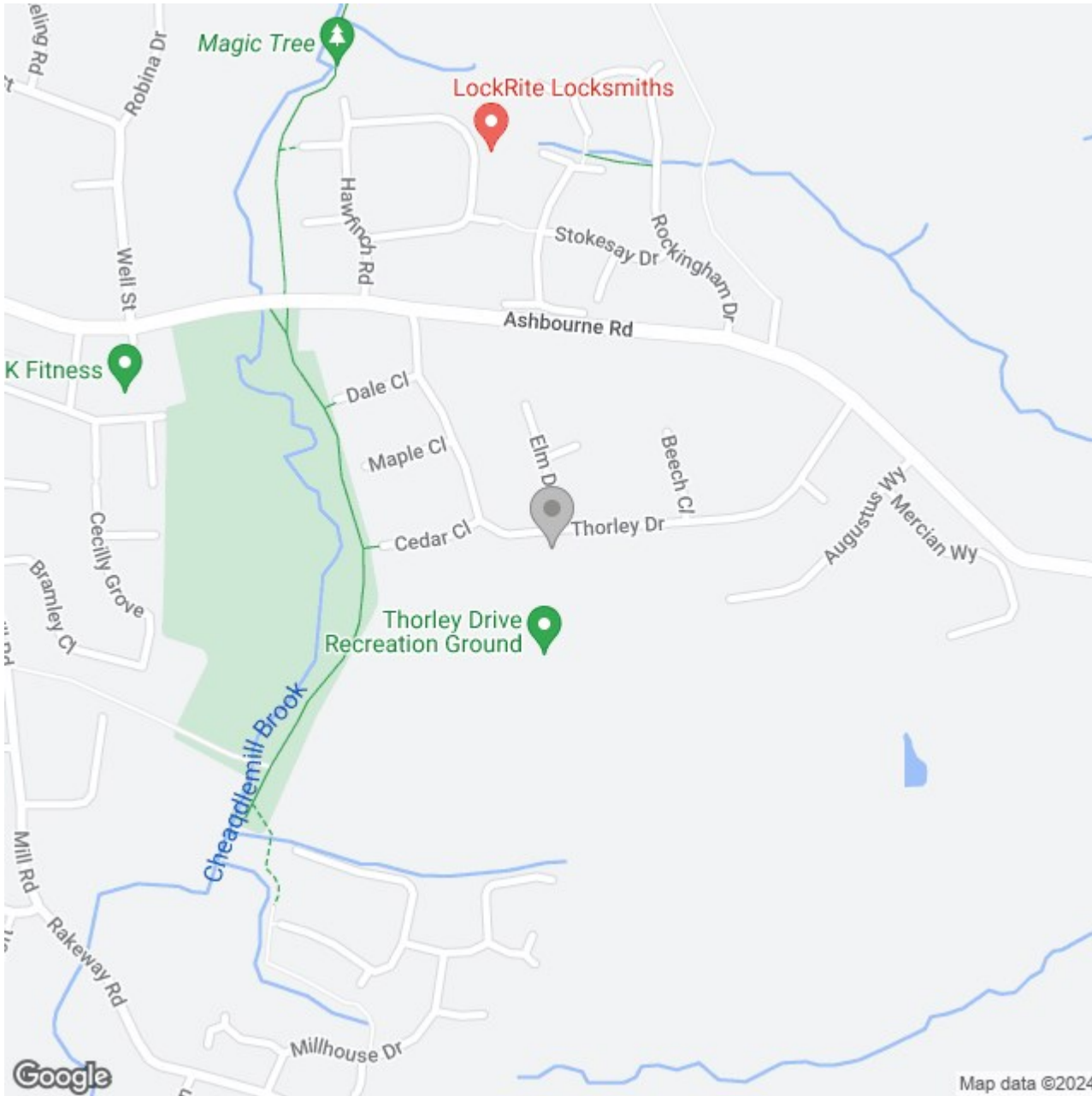
4.92 m²
52.91 ft²

(1) Excluding balconies and terraces

 Reduced headroom
(below 1.5m/4.92ft)

While every attempt has been made to ensure accuracy, all measurements are approximate, not to scale. This floor plan is for illustrative purposes only.

GIRAFFE360



Energy Efficiency Rating

	Current	Potential
Very energy efficient - lower running costs		
(92 plus) A		
(81-91) B		85
(69-80) C	67	
(55-68) D		
(39-54) E		
(21-38) F		
(1-20) G		
Not energy efficient - higher running costs		
England & Wales	EU Directive 2002/91/EC	