



New FLETCHER Oakamoor Road

Cheadle, Cheadle, ST10 1BS

**** THE FLETCHER DESIGN **** OTHER PLOTS AND DESIGNS AVAILABLE **** PRICES FROM £199,995
**** CALL ABODE TO BOOK YOUR VIEWING 01538 750081 ****

£255,000

New FLETCHER Oakamoor Road

Cheadle, Cheadle, ST10 1BS



- THREE STOREY PROPERTY
- LOUNGE/DINER
- EN SUITE & DRESSING ROOM
- PARKING & GARAGE
- HALL
- KITCHEN
- BATHROOM
- CLOAKROOM
- THREE BEDROOMS
- GARDEN

THE FLETCHER

HALL

CLOAKROOM

LOUNGE/DINER

16'2 x 13'1 (4.93m x 3.99m)

KITCHEN

12'3 x 5'11 (3.73m x 1.80m)

FIRST FLOOR LANDING

BEDROOM 2

13'1 x 10'5 (3.99m x 3.18m)

BEDROOM 3

13'1 x 7'1 (3.99m x 2.16m)

BATHROOM

7'1 x 6'2 (2.16m x 1.88m)

SECOND FLOOR

MASTER BEDROOM

14'4 x 9'8 (4.37m x 2.95m)

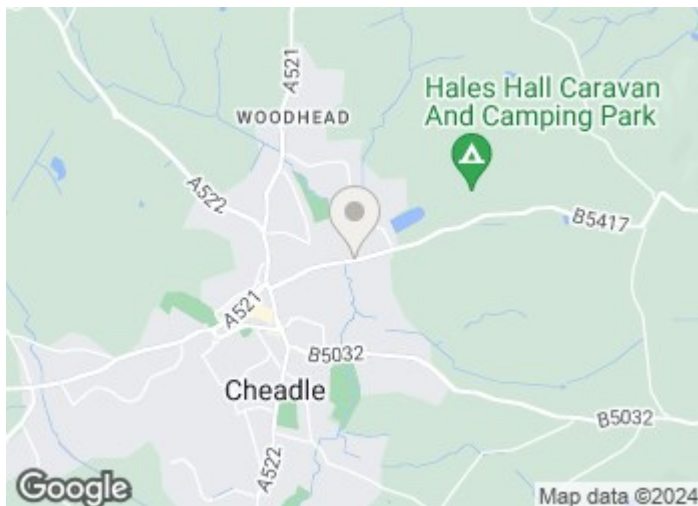
DRESSING ROOM

8'11 x 6'3 (2.72m x 1.91m)

EN SUITE

6'7 x 5'8 (2.01m x 1.73m)

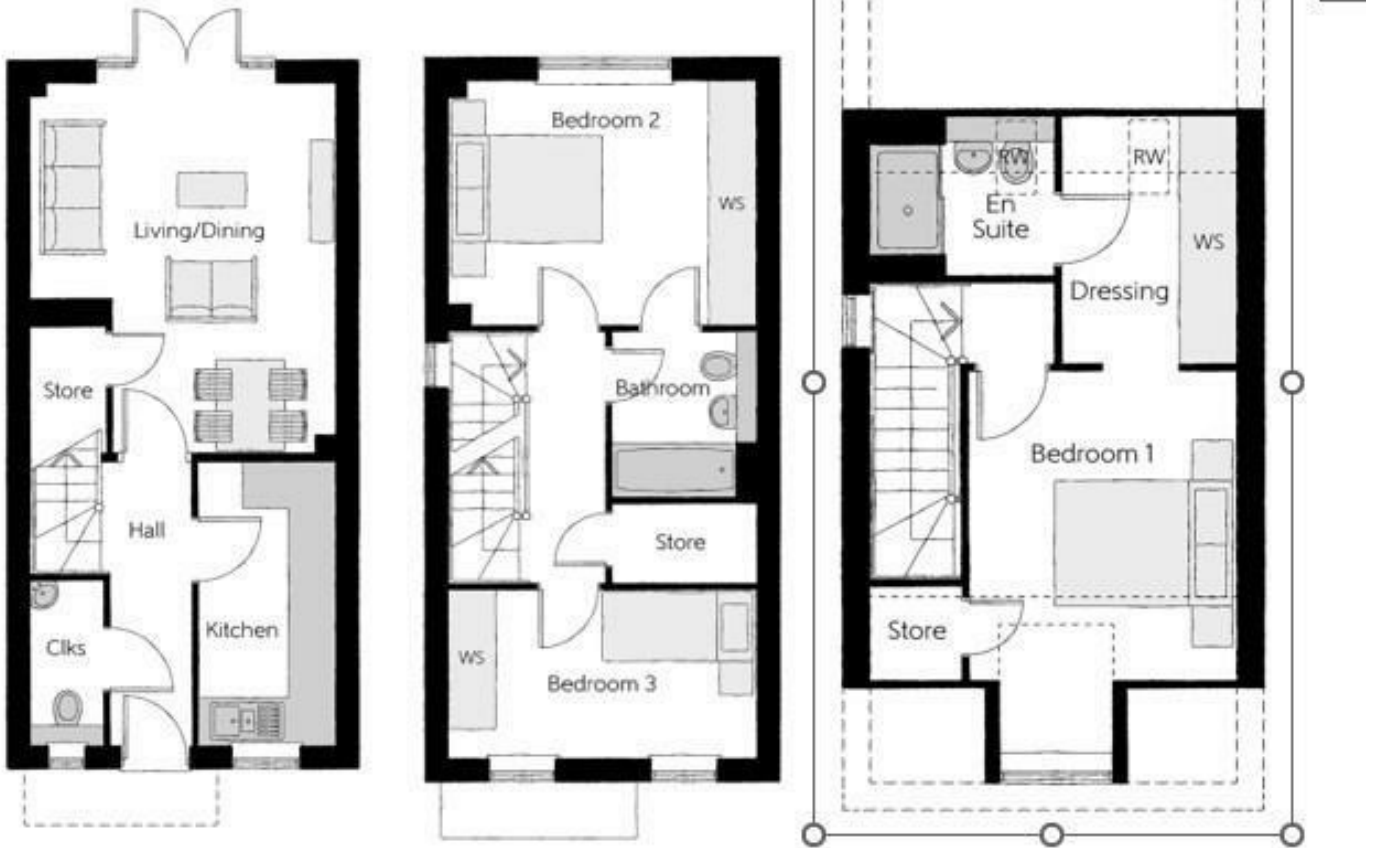
GARAGE



[Directions](#)



Floor Plan



These particulars, whilst believed to be accurate are set out as a general outline only for guidance and do not constitute any part of an offer or contract. Intending purchasers should not rely on them as statements of representation of fact, but must satisfy themselves by inspection or otherwise as to their accuracy. No person in this firm's employment has the authority to make or give any representation or warranty in respect of the property.