





An expansive and elegant Victorian residence set in a desirable location, featuring meticulously maintained interiors. The property benefits from three well proportioned reception rooms, a good sized landscaped garden, outside bar/ summer house with power and lighting, four double bedrooms and a beautiful bathroom. Viewing is highly recommended strictly via appointment only.



Upon entering the reception hallway, you'll notice a radiator and a staircase with built-in storage drawers. The original moulded cornice adorns the ceiling, and from here, doors lead to the various rooms within the house.

The lounge features space for a fire, a double-glazed bay window to the front, a radiator, and the original moulded cornice with a ceiling rose.

Moving on to the sitting room, you'll find a double-glazed window overlooking the rear, a radiator, a cornice-decorated ceiling, a log-burning stove, and a door leading to the dining room.

The dining room boasts a double-glazed window to the side, a radiator, and an adjoining door to the spacious kitchen/diner. The modern fitted kitchen incorporates an inset sink unit, work surfaces, a wide selection of wall and base units, and various integral appliances. The kitchen also features a double-glazed window and French doors leading out to the rear garden.

Furthermore, there is a cloakroom/utility room with space for a washing machine, preparation work surface, and WC.

As we ascend to the first floor, we're greeted by the double bedroom one, which is illuminated by a double-glazed window to the front and features double radiators.

Next, we have double bedroom two, located at the rear of the property, with a radiator, a

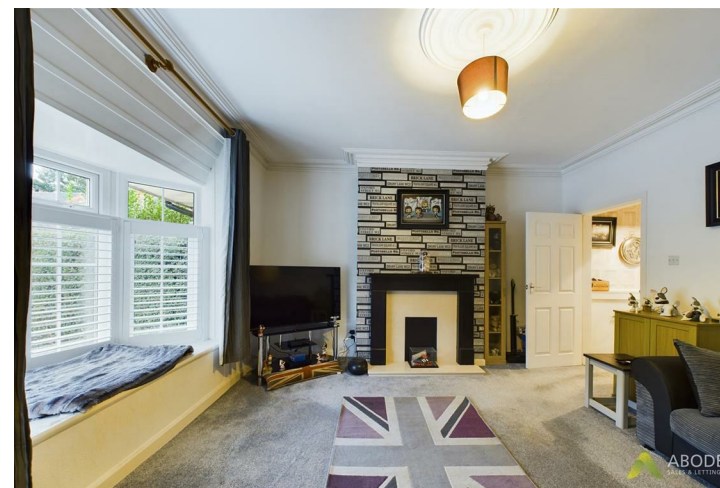


double-glazed window, and additional loft access.

Moving along, double bedroom three offers a view from the rear aspect through a double-glazed window and includes a radiator.

Lastly, double bedroom four showcases a double-glazed window to the side, a radiator, and an airing cupboard housing the gas-fired central heating boiler.

The family bathroom features a modern fitted suite





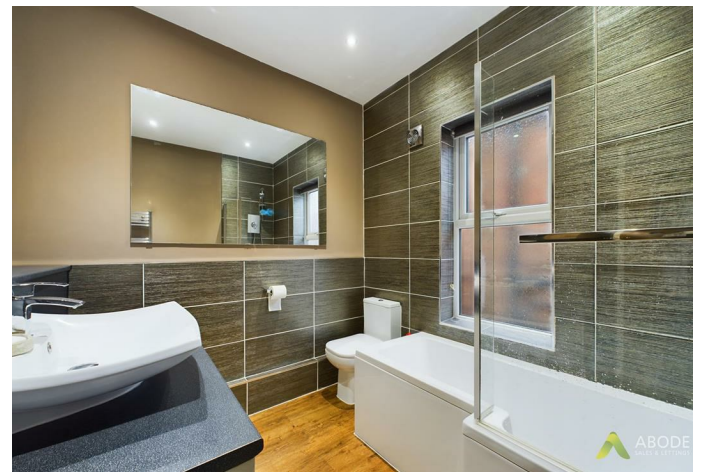
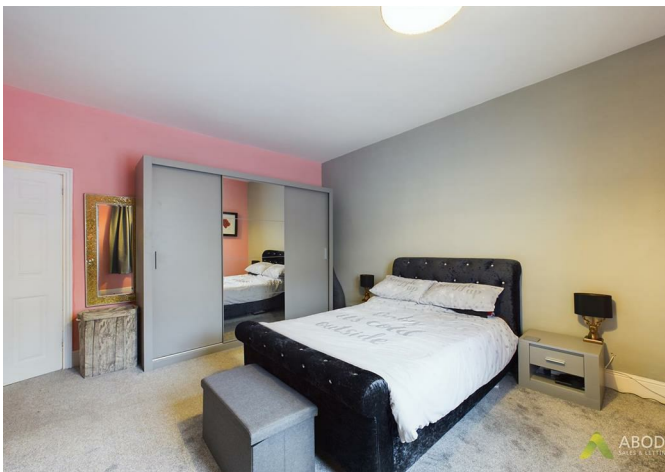


comprising an P-shaped bath with a shower over, a WC, a vanity unit with a top-mounted wash basin, a heated towel rail, a double-glazed window, and a shaver point.



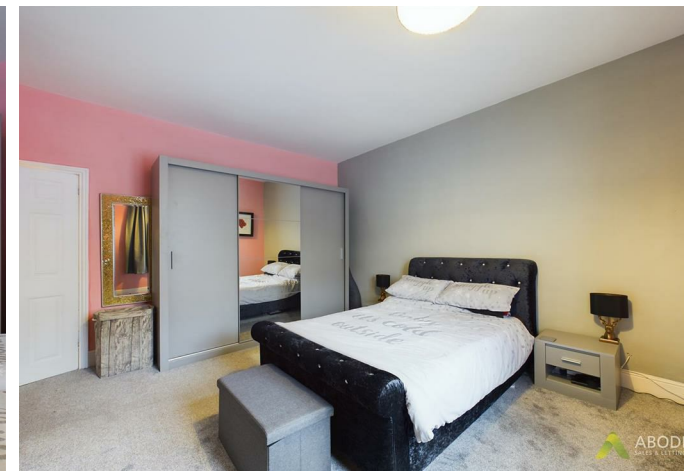
Outside, the home offers off-road parking and gated entry to a meticulously cared-for rear garden, complete with low-maintenance composite decking areas and a mains-powered summerhouse.





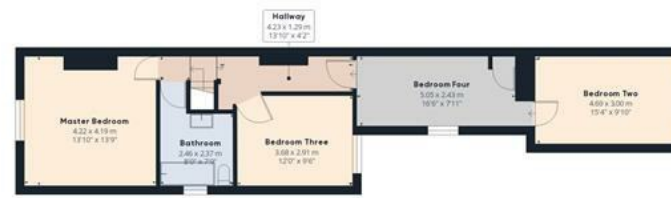








Floor 0 Building 1



Floor 1 Building 1



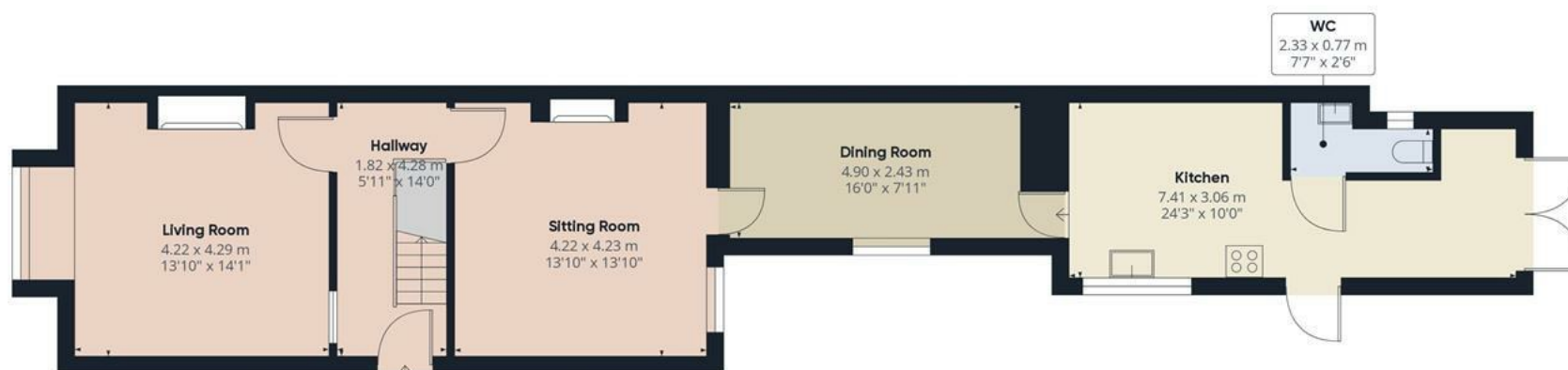
Floor 0 Building 2

Approximate total area⁽¹⁾
155.21 m²
1670.66 ft²

Excluding balconies and terraces

While every attempt has been made to ensure accuracy, all measurements are approximate, not to scale. This floor plan is for illustrative purposes only.

GIRAFFE360



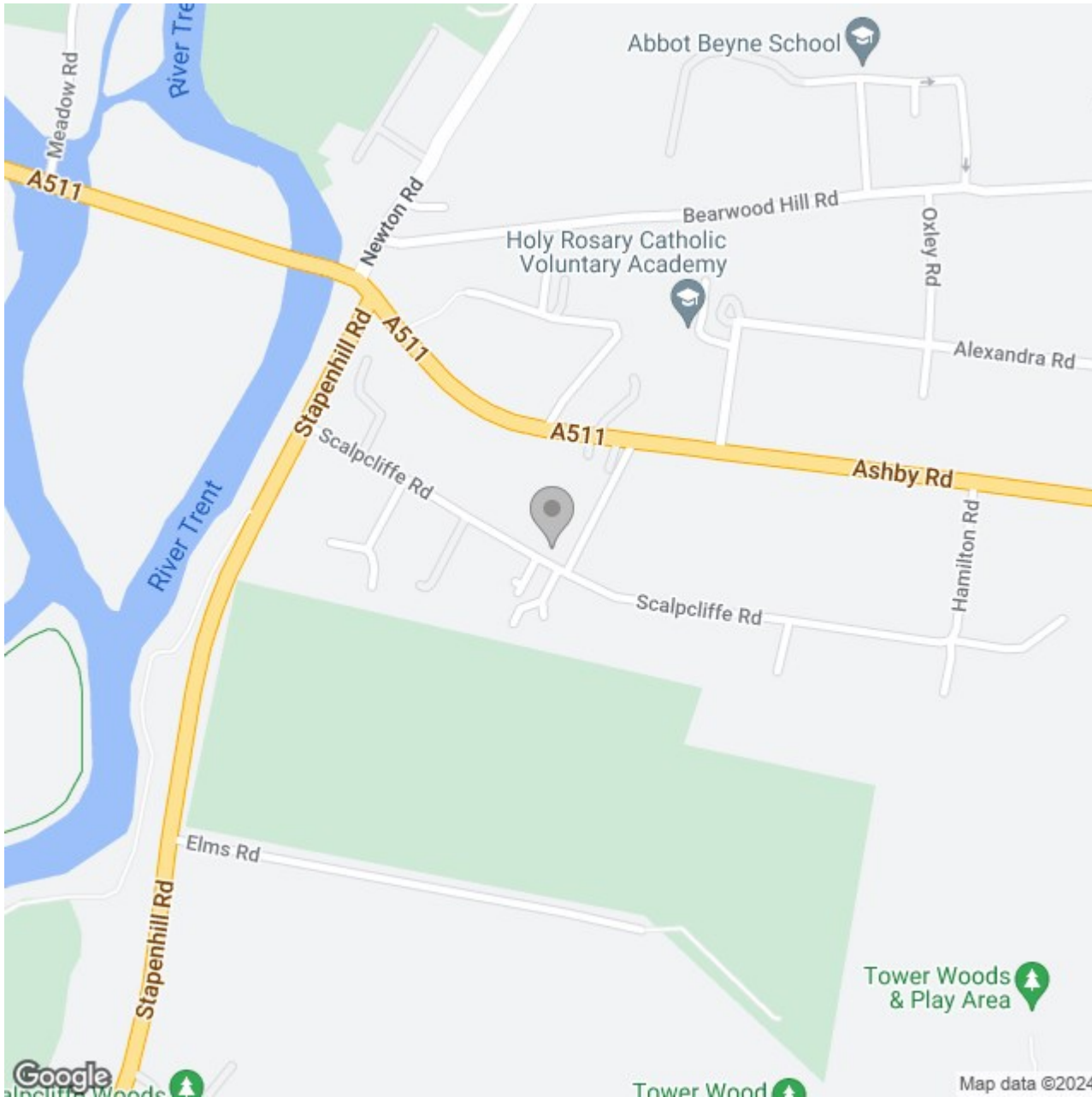
Approximate total area⁽¹⁾

78.59 m²
845.92 ft²

Excluding balconies and terraces

While every attempt has been made to ensure accuracy, all measurements are approximate, not to scale. This floor plan is for illustrative purposes only.

GIRAFFE360



Energy Efficiency Rating

	Current	Potential
Very energy efficient - lower running costs		
(92 plus) A		
(81-91) B		83
(69-80) C	64	
(55-68) D		
(39-54) E		
(21-38) F		
(1-20) G		
Not energy efficient - higher running costs		
England & Wales	EU Directive 2002/91/EC	