

*** FOR SALE BY AUCTION WITH SDL,
26th SEPTEMBER ***

**** PERIOD PROPERTY DATING BACK TO
THE 17TH CENTRY FULL OF CHARACTER
AND ORIGINAL FEATURES IN THE HEART
OF THE HISTORIC TOWN OF ASHBOURNE
**** CURRENTLY RUN AS A SUCCESSFUL
BED AND BREAKFAST **** Two entrances
and two stair cases, lounge with original
wood cladding, two dining areas, sitting
room, study, conservatory, fitted
kitchen, utility & shower room, two
ground floor bedrooms one with an en
suite. Three en suite bedrooms and a
family room (two rooms) with en suite,
first floor cloakroom/wc. Ample parking
to the rear and an enclosed garden.
THIS IS A UNIQUE OPPORTUNITY AND
MUST BE VIEWED TO BE APPRECIATED.



MAIN RECEPTION HALL

Entrance door into the main reception area, stairs to the first floor and radiator.

STUDY

8'5 x 7'1

Bow window to the front and radiator.

SITTING ROOM

11'11 x 11'7

Two windows to the front, feature gas fireplace with tiled hearth, brick surround and wood mantle, radiator and door to the second hall.

BEDROOM

10'1 x 9'8

Window and radiator.

EN SUITE

Shower, low flush wc, wash hand basin.

MIDDLE DINING AREA

11'6 x 9'5

Radiator and open through to rear dining area.

REAR DINING AREA

12'0 x 9'1

Window and door onto the garden, radiator and a door into the lounge.

LOUNGE

15'1 x 11'4

Feature log burner set within the chimney breast, radiator and original wood clad walls and original door into the second hall, door into the conservatory.



CONSERVATORY

14'2 x 10'5

Windows and doors onto the garden and a door to the kitchen.







KITCHEN

19'0 x 9'1

Fitted wall mounted, base and drawer units with work surfaces and a sink and drainer unit. Two fitted electric ovens and built in microwaves, gas hob with extractor hood, plumbing for dishwasher, appliance space, door onto the garden and a door to the second hall.

SECOND HALL

Second entrance door to the front, stairs to the first floor and doors to -

UTILITY & SHOWER ROOM

Enclosed shower, low flush wc, wash hand basin, plumbing and spaces for two washing machines and space for tumble dryer, radiator and window.

BEDROOM

13'5 x 12'5

Window and radiator.

FIRST FLOOR

Storage cupboards, second staircase and doors to -

CLOAKROOM/WC

Low flush wc.

BEDROOM

15'8 x 9'6

Window and radiator.

EN SUITE

Shower, low flush wc wash hand basin.

BEDROOM

11'11 x 8'4

Window, storage cupboard and radiator.



EN SUITE

Shower, low flush wc wash hand basin.

BEDROOM

11'5 x 8'2

Window and radiator and open through to -

BEDROOM

12'6 x 9'10

Window, radiator. and a door onto the hall. These rooms could be two separate rooms.

EN SUITE

Shower, low flush wc wash hand basin.

BEDROOM

16'0 x 10;11

Windows, storage cupboard and radiator.

EN SUITE BATHROOM

10'7 x 8'6

Corner bath with a shower and a shower screen, low flush wc, wash hand basin.

OUTSIDE

Side double gates into the private parking area for a number of vehicles, Outbuilding/shed and a mature garden with shrubs and trees.





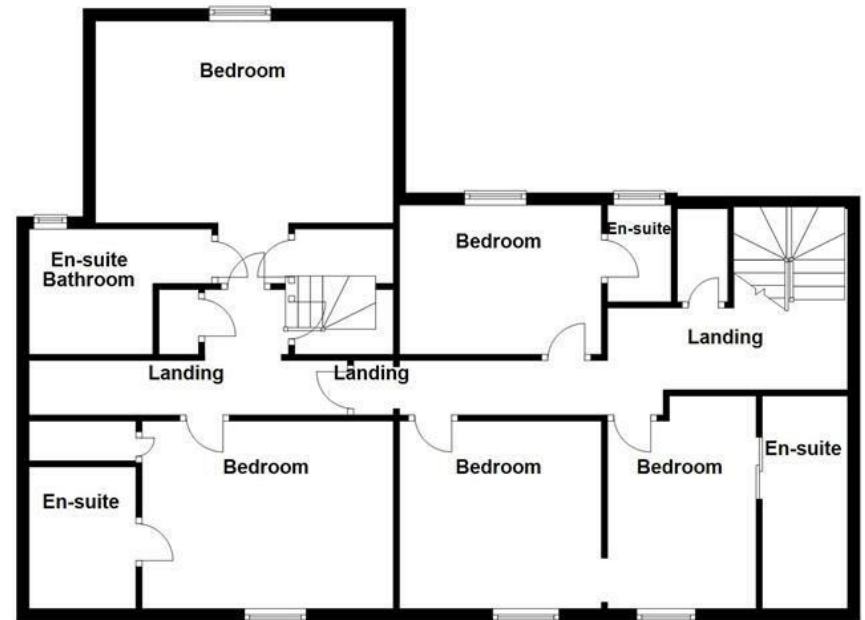


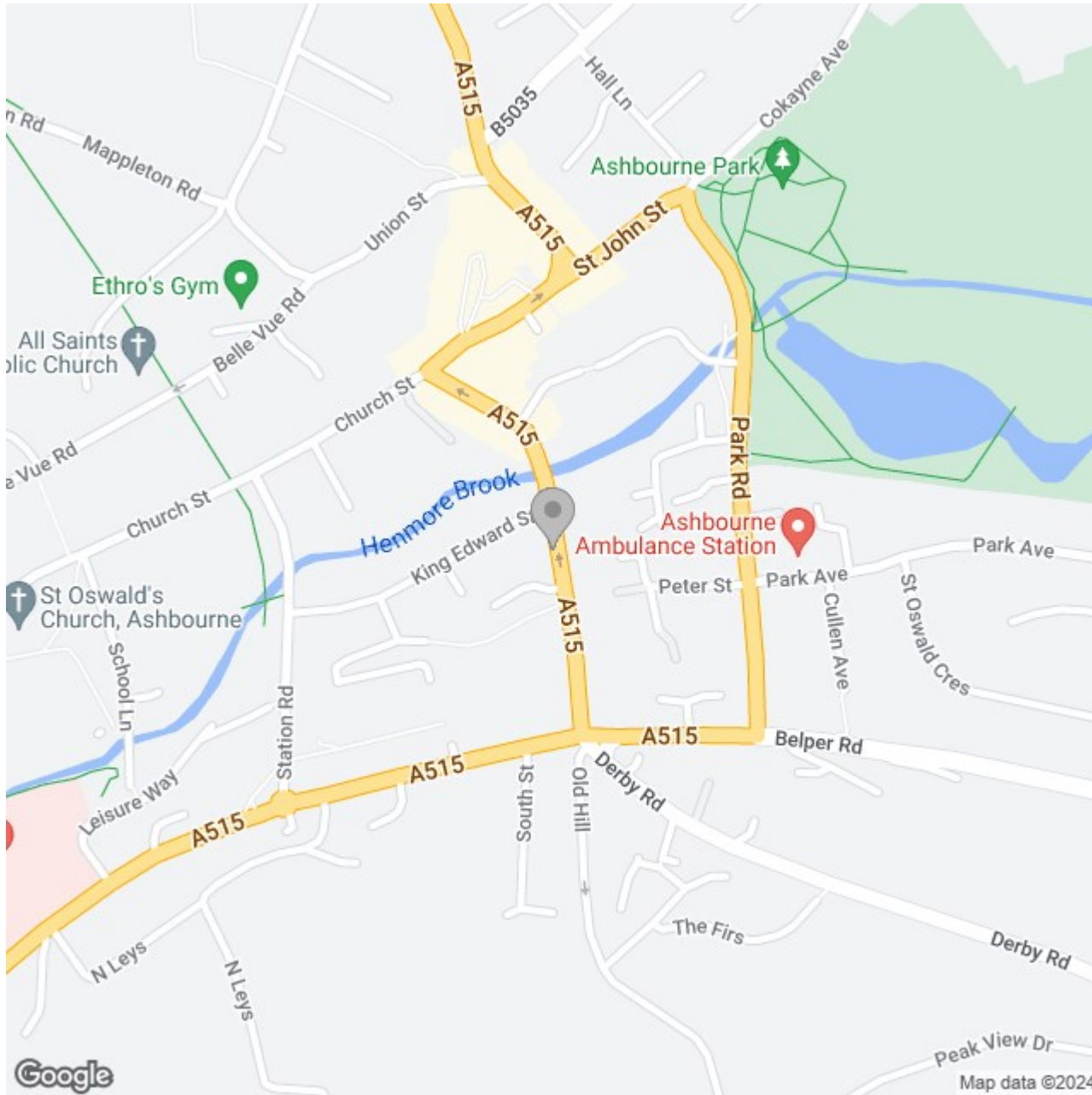


Ground Floor



First Floor





Energy Efficiency Rating

	Current	Potential
Very energy efficient - lower running costs		
(92 plus) A		89
(81-91) B		
(69-80) C	69	
(55-68) D		
(39-54) E		
(21-38) F		
(1-20) G		
Not energy efficient - higher running costs		
England & Wales	EU Directive 2002/91/EC	