





\*\*\*CALLING ALL FIRST TIME BUYERS\*\*\*

Reserve selected plots and receive  
incentives \*\*\*

The Attenborough is a 930 sq.ft. 2-  
bedroom, mews house. On the ground  
floor is a spacious open plan  
lounge/kitchen/dining area with under-  
stairs store. There's also a handy  
separate w.c. from the hallway.

On the first floor you will find the master  
bedroom complete with en-suite, a  
further double bedroom, the bathroom  
and utility area.



**ABODE**  
SALES & LETTINGS

The Attenborough is a 930 sq.ft. 2-bedroom, mews house. On the ground floor is a spacious open plan lounge/kitchen/dining area with under-stairs store. There's also a handy separate w.c. from the hallway.

On the first floor you will find the master bedroom complete with en-suite, a further double bedroom, the bathroom and utility area.







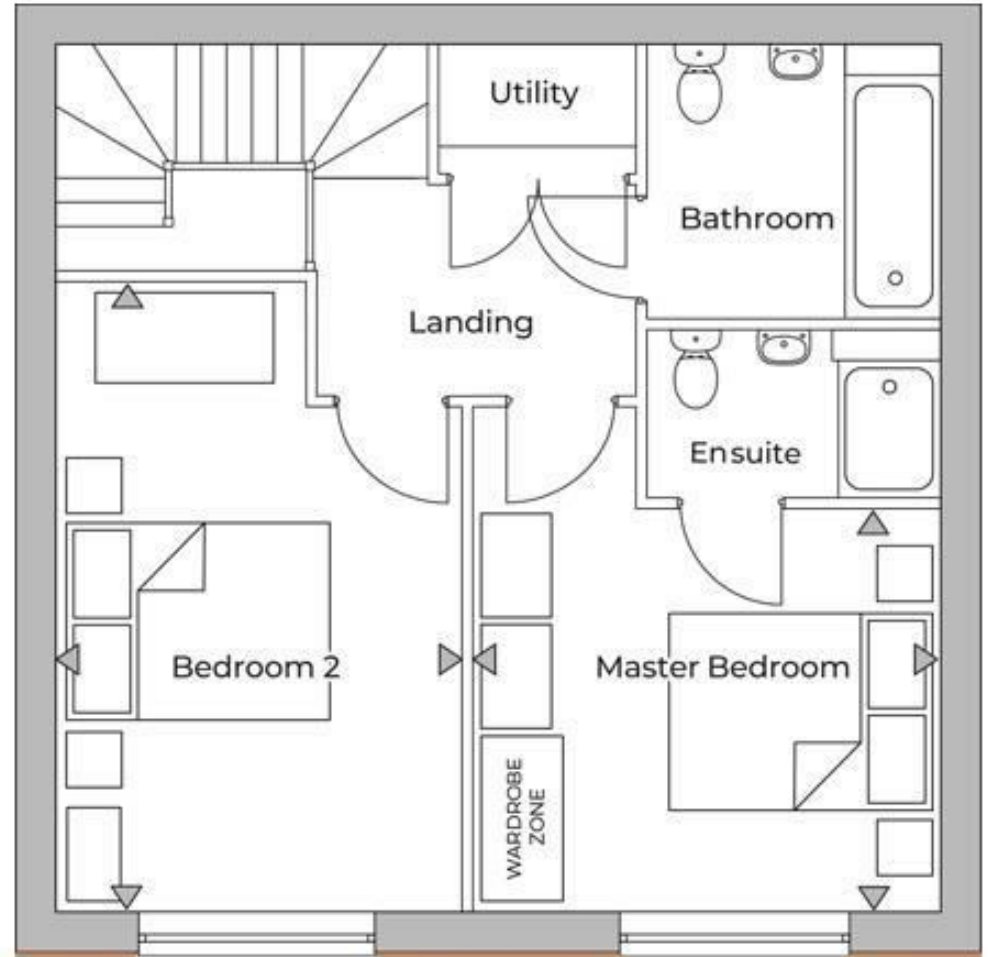
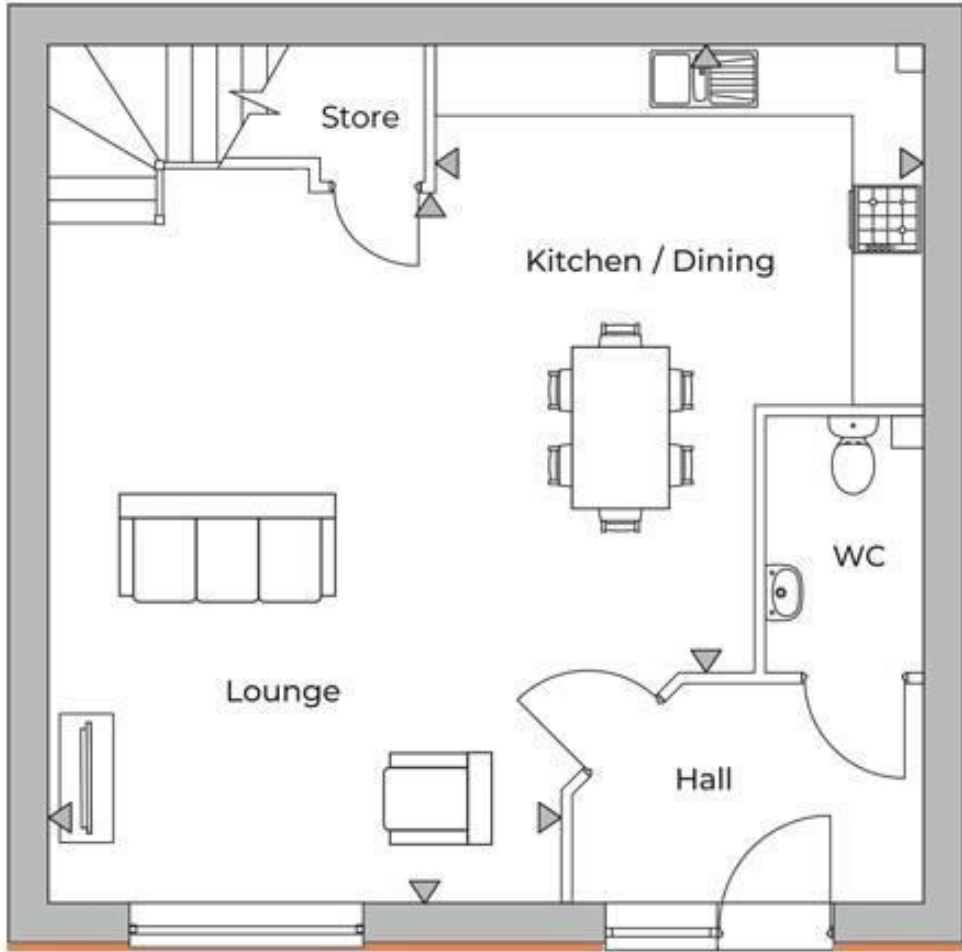










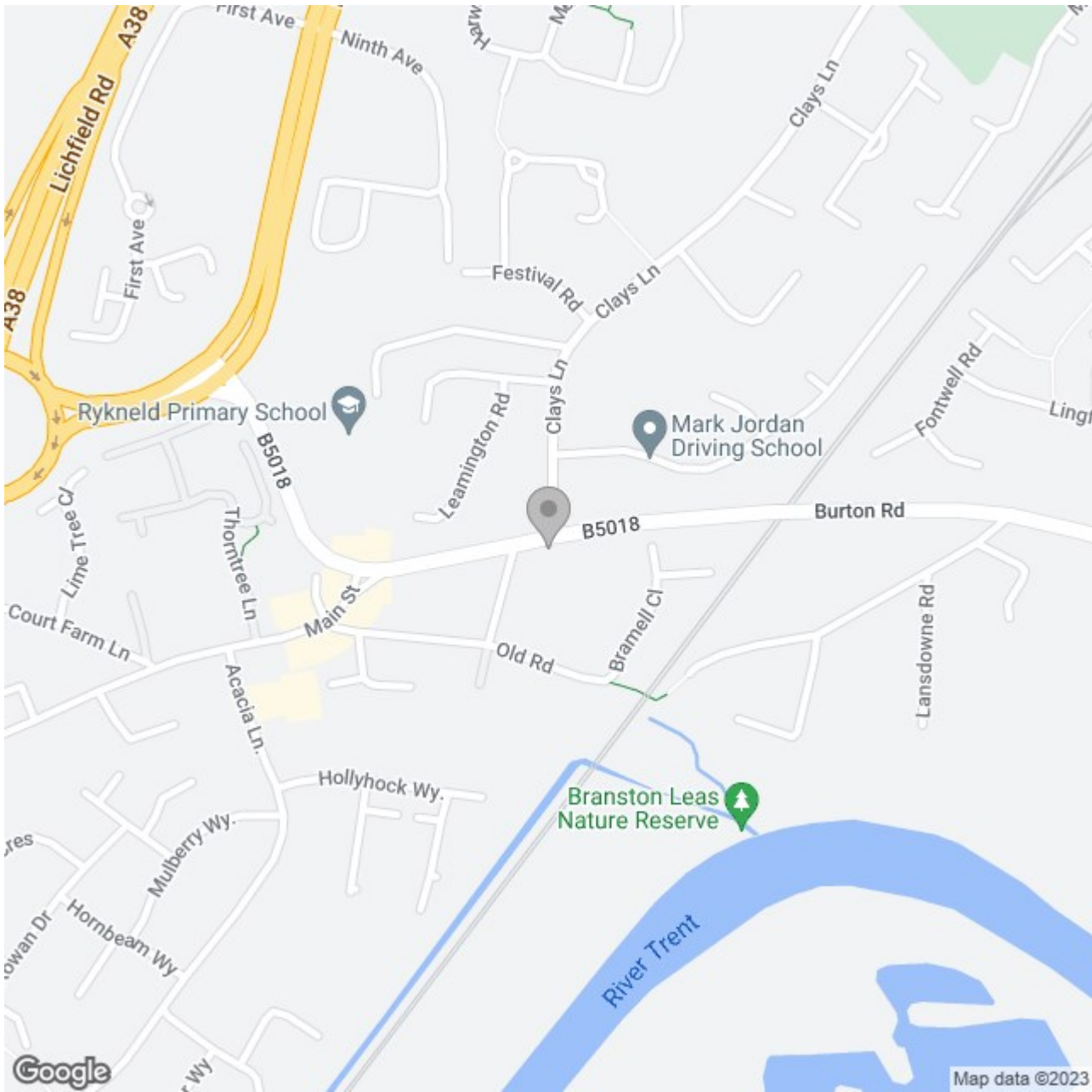


# Fairfields

Clays Lane, Branston

- |   |   |
|---|---|
|  Rempstone 1,365 sq ft<br>4-Bedroom House |  Milford 683 sq ft<br>2-Bedroom House      |
|  Cadeby 1,336 sq ft<br>4-Bedroom House    |  Attenborough 930 sq ft<br>2-Bedroom House |
|  Wymeswold 1,259 sq ft<br>4-Bedroom House |  Trent 695 sq ft<br>1-Bedroom House        |
|  Bradgate 1,228 sq ft<br>4-Bedroom House  |  Registered Housing<br>Provider            |
|  Carsington 984 sq ft<br>3-Bedroom House  |  View Home &<br>Marketing Suite            |
|  Tissington 984 sq ft<br>3-Bedroom House  |  Show<br>Home                              |
|  Brassington 880 sq ft<br>3-Bedroom House |  Cycle Store                               |
|  Foston 850 sq ft<br>3-Bedroom House     |  Bin Store                               |





## Energy Efficiency Rating

	Current	Potential
Very energy efficient - lower running costs		
(92 plus) <b>A</b>		
(81-91) <b>B</b>		
(69-80) <b>C</b>		
(55-68) <b>D</b>		
(39-54) <b>E</b>		
(21-38) <b>F</b>		
(1-20) <b>G</b>		
Not energy efficient - higher running costs		
<b>England &amp; Wales</b>	EU Directive 2002/91/EC	