



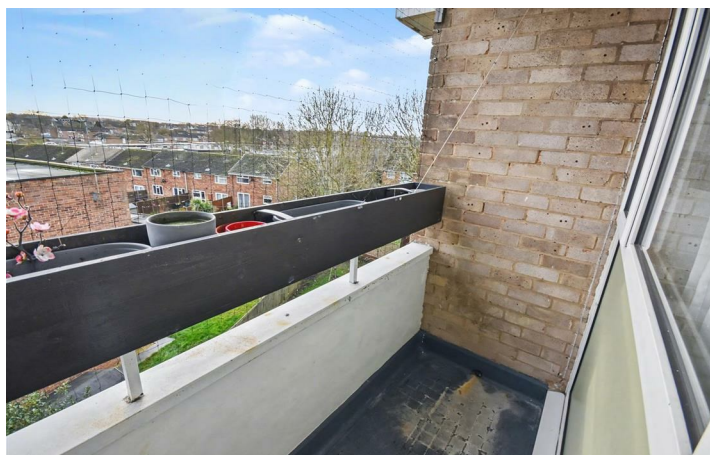
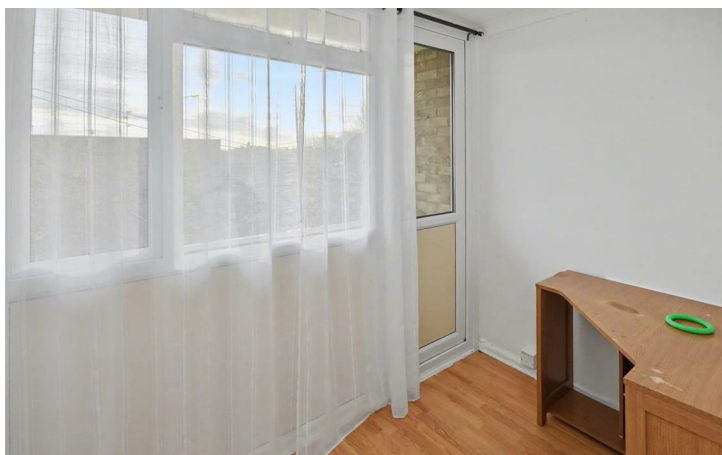
53 Shire Road
Corby, NN17 2HG



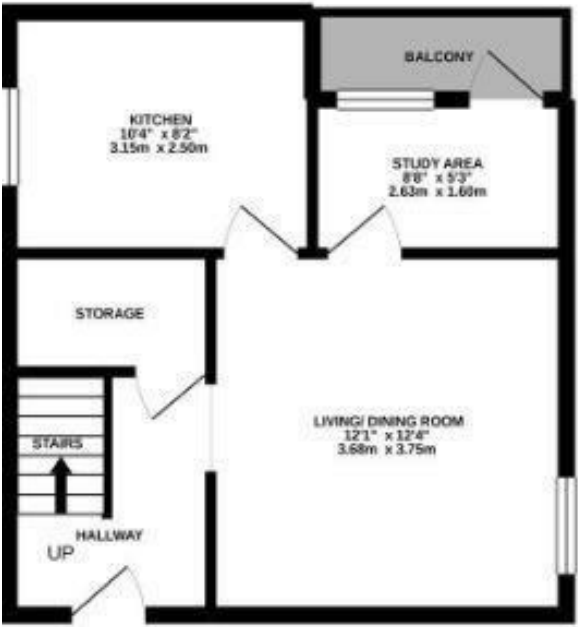
Simpson West

Simpson West Lettings are pleased to offer to let this deceptively spacious two bedroom first floor maisonette. The property itself is located near a range of amenities within the popular Shire area of Corby. The lower floor proudly boasts entrance hall, lounge/ diner, kitchen, study area and a balcony. To the first floor are two double bedrooms and a family bathroom. The second bedroom two also benefits from a balcony and there is a large, lockable storage cupboard on the ground floor of the building. Energy Rating D. Council Tax Band A.

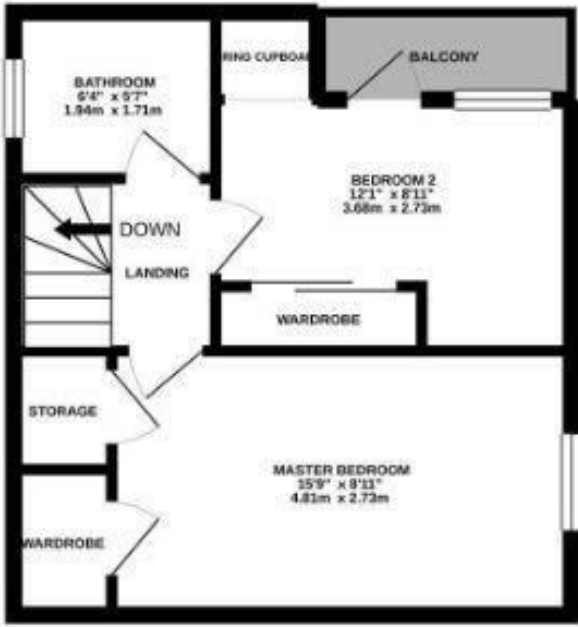
£875 Per Calendar Month



GROUND FLOOR
363 sq.ft. (33.7 sq.m.) approx.



1ST FLOOR
363 sq.ft. (33.7 sq.m.) approx.



Energy Efficiency Rating

	Current	Potential
Very energy efficient - lower running costs		
(92 plus) A		
(81-91) B		
(69-80) C		
(55-68) D		
(39-54) E		
(21-38) F		
(1-20) G		
Not energy efficient - higher running costs		
England & Wales		EU Directive 2002/91/EC



When you buy with Simpson West, you know **you'll be in safe hands**. From the moment you walk through our doors, we'll make you **feel truly welcome**. Our sales consultants and financial advisors will take you through **every step of the process**, offering **free expert advice** along the way, from help choosing the right mortgage and insurance through to finding your conveyancer. And if you need help selling your home too, **with over 20 years of local experience, you can trust us to get you moving**.



**Simpson
West**

Making Every
Journey Personal



01536 202007

info@simpsonwest.co.uk

<https://www.simpsonwest.co.uk/>

64 Corporation Street, Corby, Northants, NN17 1NH