

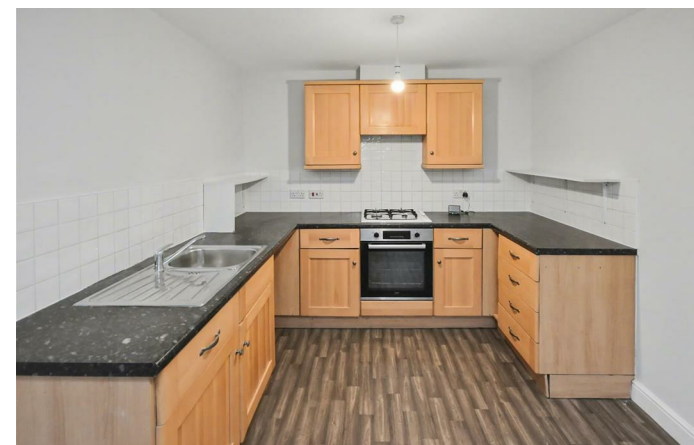


28 Carlisle Close
Corby, NN18 8RN



Simpson West

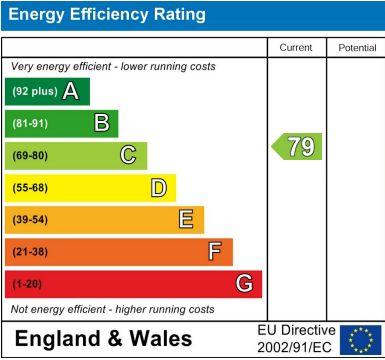
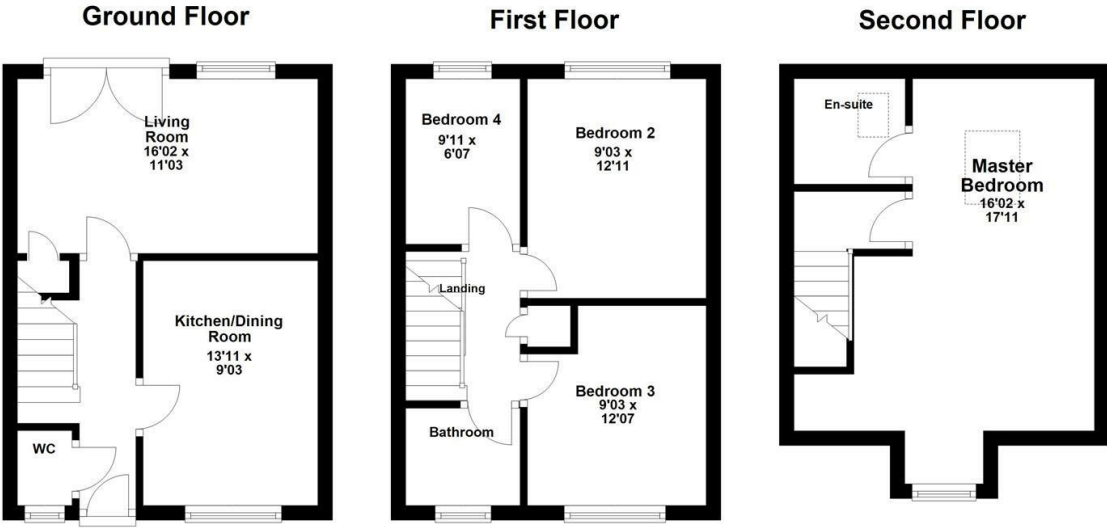
Simpson West are delighted to offer to the market this superb four bedroom family home situated on the ever so popular Oakley Vale development that has been renovated throughout. The property itself is within walking distance to local school and other amenities. Features include a modern kitchen dining room, a light and airy living room with patio doors to the garden and a cloakroom w/c. To the first floor there are two brilliant double bedrooms and a good sized single as well a family bathroom with three piece suite. To the second floor is the master bedroom which boasts stylish velux windows and an en-suite shower room. To the front of the property is a low maintenance garden laid to lawn. At the rear we have a private garden which is fully enclosed and is also laid to lawn with gated access providing passage to the garage with power and lighting and a double driveway. Early viewings are highly advised. Energy Rating C. Council Tax Band C.



£1,300 Per Calendar Month

 4  2  1





When you buy with Simpson West, you know **you'll be in safe hands**. From the moment you walk through our doors, we'll make you **feel truly welcome**. Our sales consultants and financial advisors will take you through **every step of the process**, offering **free expert advice** along the way, from help choosing the right mortgage and insurance through to finding your conveyancer. And if you need help selling your home too, **with over 20 years of local experience, you can trust us to get you moving**.



**Simpson
West**

Making Every
Journey Personal



01536 202007

info@simpsonwest.co.uk

<https://www.simpsonwest.co.uk/>

64 Corporation Street, Corby, Northants, NN17 1NH