



97 Chepstow Road  
Corby, NN18 8QQ



**Simpson West**



Situated in a prime position within the highly sought-after Oakley Vale area of Corby, this beautifully presented FOUR BEDROOM detached family home, built by David Wilson Homes to the “Chelworth” design, offers exceptionally spacious accommodation throughout and must be viewed to be appreciated. The property further benefits from SOLAR PANELS, enhancing energy efficiency and reducing running costs.

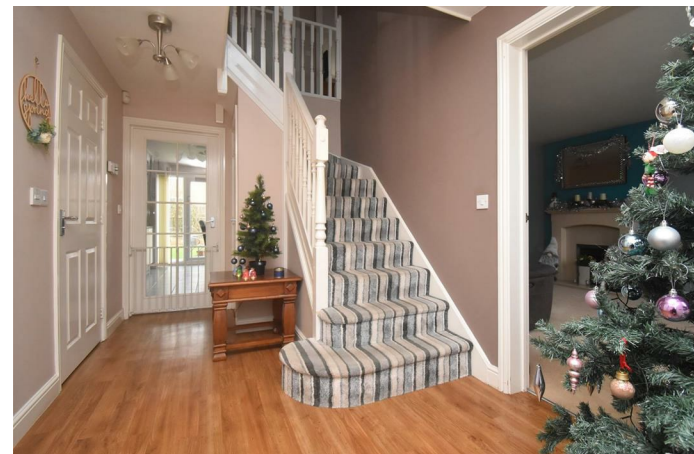
The accommodation comprises a welcoming entrance hall, cloakroom/WC, living room, dining room, generous study, and an impressive open plan kitchen/breakfast/family room with separate utility. To the first floor is a galleried landing leading to four double bedrooms, all with FITTED WARDROBES, including a principal bedroom with en-suite, plus a four-piece family bathroom.

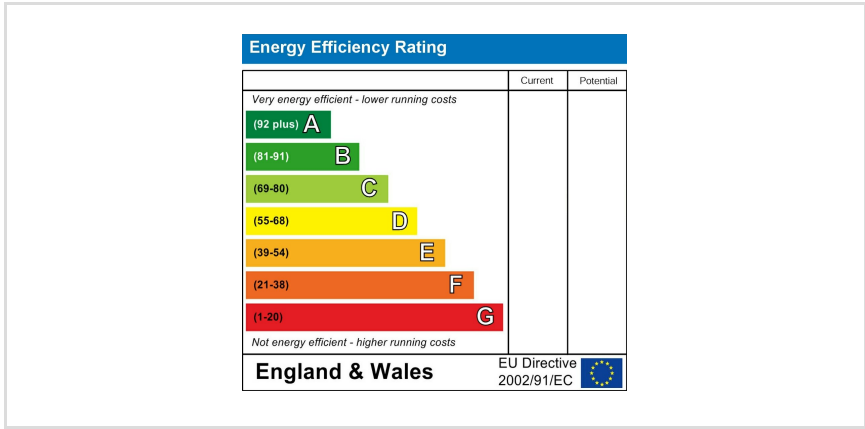
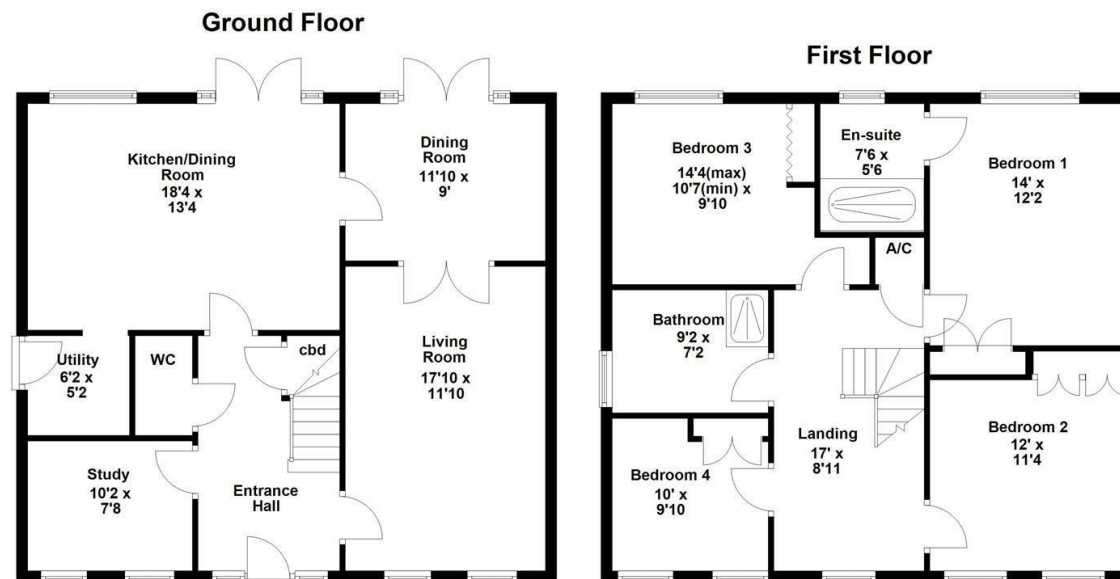
Externally, the home enjoys established front gardens, a shared driveway providing ample parking, and a single garage with ELECTRIC ROLLER DOOR and a EV CHARGER POINT. The large, fully enclosed rear garden features a patio, lawn, mature borders, and a decked seating area.

A rare opportunity to acquire one of the largest David Wilson homes in Oakley Vale. Early viewing advised.

Energy Rating . Council Tax Band .

£385,000







When you buy with Simpson West, you know **you'll be in safe hands**. From the moment you walk through our doors, we'll make you **feel truly welcome**. Our sales consultants and financial advisors will take you through **every step of the process**, offering **free expert advice** along the way, from help choosing the right mortgage and insurance through to finding your conveyancer. And if you need help selling your home too, **with over 20 years of local experience, you can trust us to get you moving**.



**Simpson  
West**

Making Every  
Journey Personal



01536 202007

[info@simpsonwest.co.uk](mailto:info@simpsonwest.co.uk)

<https://www.simpsonwest.co.uk/>

64 Corporation Street, Corby, Northants, NN17 1NH