



11 Belfry Drive
Corby, NN17 5GN



Simpson West

Nestled within the ever popular Priors Hall Park, this delightful two-bedroom semi-detached home was constructed to a high standard by the reputable Barratt Homes. Ideally positioned, it is just a short walk from the local school, shops, and a range of amenities. The accommodation includes an entrance hall, cloakroom/WC, a modern fitted kitchen, and a spacious living/dining room with doors opening onto the rear garden. Upstairs, you will find two well-proportioned double bedrooms and a contemporary family bathroom. Externally, the property boasts a generous, fully enclosed rear garden featuring a patio and lawn area, along with a sizable driveway to the side offering off-road parking. Early viewing is highly recommended. Energy Rating: B. Council Tax Band: B. Priors Hall Management Fee applies – £284 per annum.

£210,000



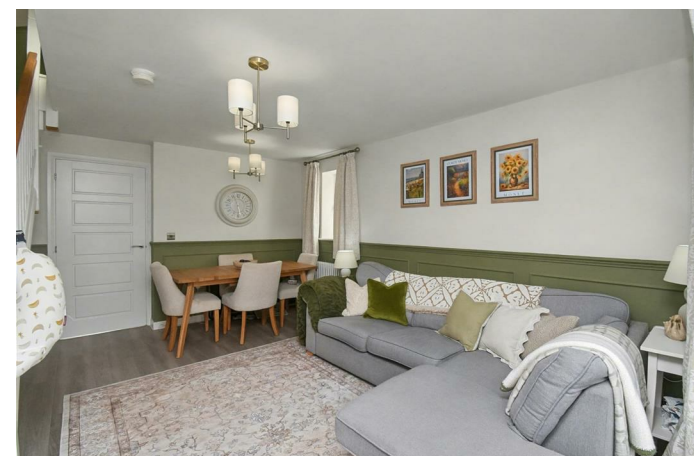
2



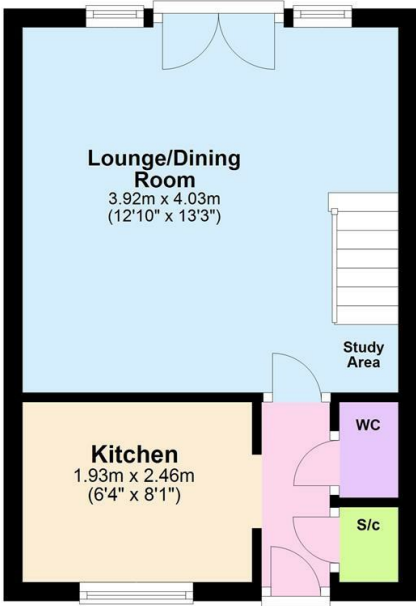
1



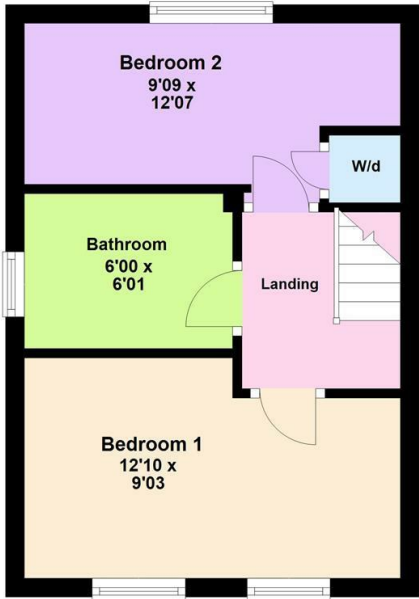
1



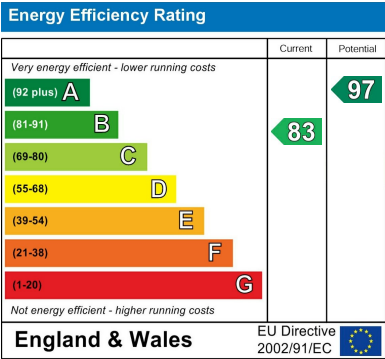
Ground Floor



First Floor



Floor plan not to scale - for guidance purposes only.
Plan produced using PlanUp.



When you buy with Simpson West, you know **you'll be in safe hands**. From the moment you walk through our doors, we'll make you **feel truly welcome**. Our sales consultants and financial advisors will take you through **every step of the process**, offering **free expert advice** along the way, from help choosing the right mortgage and insurance through to finding your conveyancer. And if you need help selling your home too, **with over 20 years of local experience, you can trust us to get you moving**.



**Simpson
West**

Making Every
Journey Personal



01536 202007

info@simpsonwest.co.uk

<https://www.simpsonwest.co.uk/>

64 Corporation Street, Corby, Northants, NN17 1NH