



39 Cupar Crescent  
Corby, NN17 1RF



**Simpson West**



Simpson West are pleased to offer for rent this THREE BEDROOM family home which is conveniently located within walking distance to the town centre. Features to include a spacious lounge, large kitchen and a downstairs porch. Upstairs there are three double bedrooms, a bathroom with shower over the bath and a separate W/C. Outside large is a rear garden with a storage shed and a driveway offering parking for multiple vehicles. Energy Rating D. Council Tax Band A.

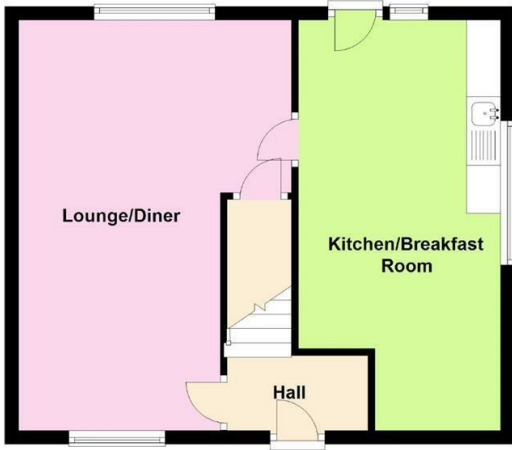


£1,100 Per Calendar Month

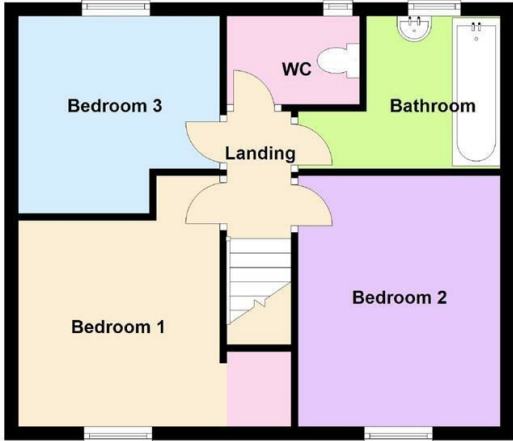
 3  1  nul



Ground Floor



First Floor



Floor plan not to scale - for guidance purposes only.  
Plan produced using PlanUp.



Energy Efficiency Rating		
	Current	Potential
Very energy efficient - lower running costs		
(92 plus) <b>A</b>		
(81-91) <b>B</b>		
(69-80) <b>C</b>		
(55-68) <b>D</b>		
(39-54) <b>E</b>		
(21-38) <b>F</b>		
(1-20) <b>G</b>		
Not energy efficient - higher running costs		
<b>England &amp; Wales</b>	EU Directive 2002/91/EC	





When you buy with Simpson West, you know **you'll be in safe hands**. From the moment you walk through our doors, we'll make you **feel truly welcome**. Our sales consultants and financial advisors will take you through **every step of the process**, offering **free expert advice** along the way, from help choosing the right mortgage and insurance through to finding your conveyancer. And if you need help selling your home too, **with over 20 years of local experience, you can trust us to get you moving**.



**Simpson  
West**

Making Every  
Journey Personal



01536 202007

[info@simpsonwest.co.uk](mailto:info@simpsonwest.co.uk)

<https://www.simpsonwest.co.uk/>

64 Corporation Street, Corby, Northants, NN17 1NH