



37 Lavender Close
Corby, Northants NN18 8NX



Simpson West

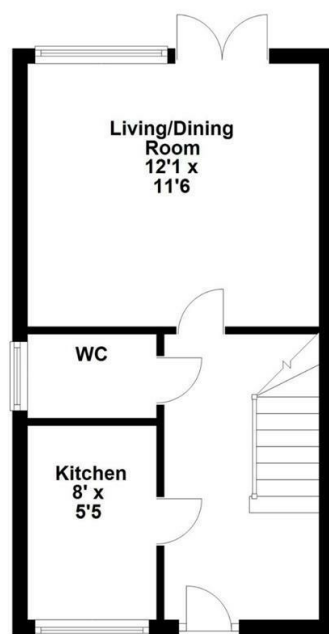
Simpson West Lettings are delighted to offer for rent this well presented three/four bedroom, three storey townhouse which is situated on the popular Oakley Vale area of Corby. The property benefits a hall, guest cloakroom, fitted kitchen, lounge/diner. Upstairs there are two double bedrooms, study/fourth bedroom and a family bathroom and a master bedroom with en-suite. Outside is an enclosed rear garden, off road parking and a garage. Viewing is highly recommended. Energy Rating C. Council Tax Band C.

£1,195 PCM

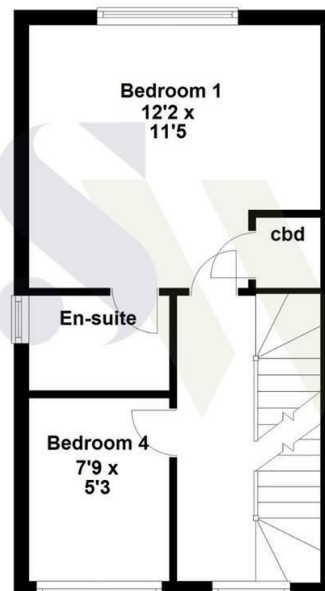


Simpson West

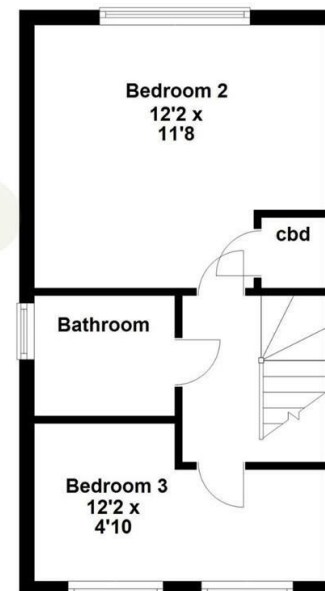
Ground Floor



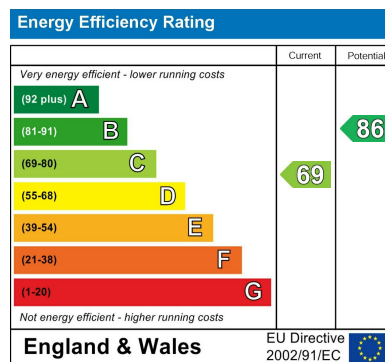
First Floor



Second Floor



Floor plan not to scale - for guidance purposes only.
Floor plan created by Simpson West for their use.
Plan produced using PlanUp.



When you buy with Simpson West, you know **you'll be in safe hands**. From the moment you walk through our doors, we'll make you **feel truly welcome**. Our sales consultants and financial advisors will take you through **every step of the process**, offering **free expert advice** along the way, from help choosing the right mortgage and insurance through to finding your conveyancer. And if you need help selling your home too, **with over 20 years of local experience, you can trust us to get you moving**.



**Simpson
West**

Making Every
Journey Personal



01536 202007

info@simpsonwest.co.uk

<https://www.simpsonwest.co.uk/>

64 Corporation Street, Corby, Northants, NN17 1NH