



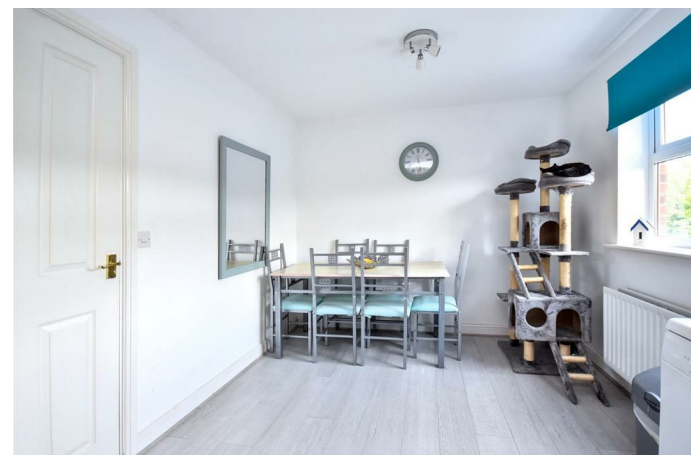
51 Carlisle Close
Corby, NN18 8RN

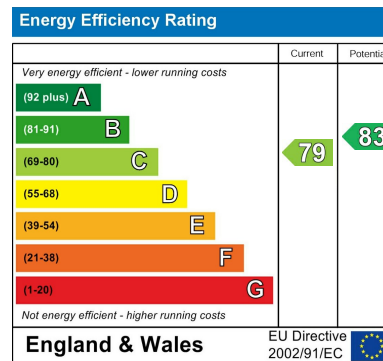


Simpson West

Located within the highly popular Oakley Vale area, is this extremely spacious FOUR BEDROOMED property. Situated within walking distance to Primary and Secondary schools as well as shops and transport links and perfectly positioned on a private driveway within a quiet cul-de-sac. Features include an entrance hall, cloakroom w/c, bedroom 4/study and a utility room. To the first floor there is the kitchen/dining room and an airy living room. The second floor provides three bedrooms, with the largest boasting en-suite shower room facilities, in addition there is the family bathroom. Outside, there is an open plan frontage with a driveway providing OFF ROAD PARKING for multiple vehicles leading to the GARAGE. The rear garden is highly established, is of good with a decking area and fully enclosed on all side. Viewing is highly recommended to avoid disappointment. Energy rating C. Council Tax Band C.

£239,950





When you buy with Simpson West, you know **you'll be in safe hands**. From the moment you walk through our doors, we'll make you **feel truly welcome**. Our sales consultants and financial advisors will take you through **every step of the process**, offering **free expert advice** along the way, from help choosing the right mortgage and insurance through to finding your conveyancer. And if you need help selling your home too, **with over 20 years of local experience, you can trust us to get you moving**.



**Simpson
West**

Making Every
Journey Personal



01536 202007

info@simpsonwest.co.uk

<https://www.simpsonwest.co.uk/>

64 Corporation Street, Corby, Northants, NN17 1NH