



16 Fellows Close

Weldon, Northamptonshire NN17 3LT



Simpson West

Simpson West Lettings are delighted to offer for rent this Persimmon built two double bedroom semi-detached house which is situated on the exciting Weldon Park development. The property has many features throughout and proudly boasts entrance hall, downstairs WC, lounge and a kitchen/diner with patio door leading to the garden. Upstairs there are two double bedrooms and a family bathroom. Outside there is a fully enclosed rear garden and off road parking for two vehicles to the front of the property. Viewing is highly recommended. Energy Rating B. Council tax band B.

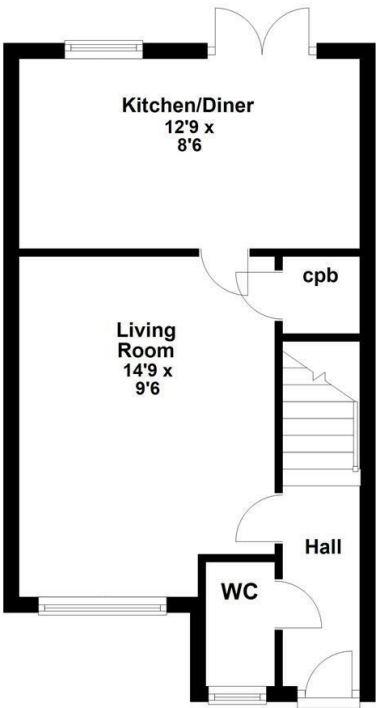
£950 PCM



Simpson West

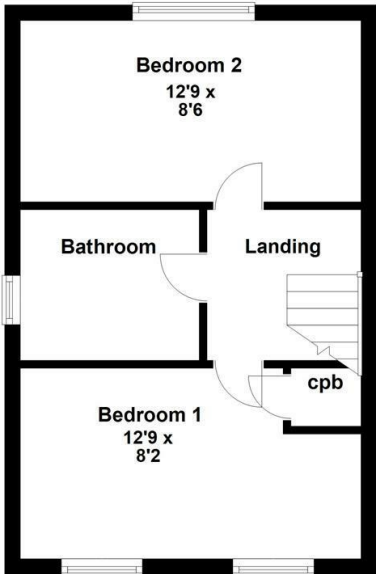
Ground Floor

Approx. 32.4 sq. metres (348.7 sq. feet)

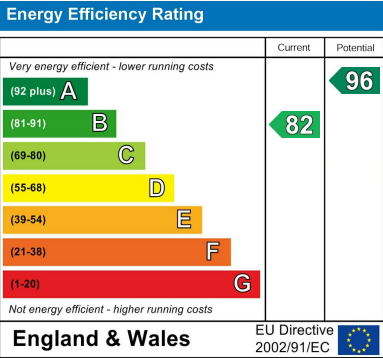


First Floor

Approx. 30.1 sq. metres (324.4 sq. feet)



Floor plan not to scale - for guidance purposes only.
Plan produced using PlanUp.



When you buy with Simpson West, you know **you'll be in safe hands**. From the moment you walk through our doors, we'll make you **feel truly welcome**. Our sales consultants and financial advisors will take you through **every step of the process**, offering **free expert advice** along the way, from help choosing the right mortgage and insurance through to finding your conveyancer. And if you need help selling your home too, **with over 20 years of local experience, you can trust us to get you moving**.



**Simpson
West**

Making Every
Journey Personal



01536 202007

info@simpsonwest.co.uk

<https://www.simpsonwest.co.uk/>

64 Corporation Street, Corby, Northants, NN17 1NH