



14 Lulworth Walk

Corby, Northamptonshire NN18 0DY



**Simpson West**



Simpson West Lettings are delighted to offer for rent this well presented three bedroom end of terrace property situated on a generous corner plot in a popular walk within the sought after Beanfield area. The immaculately presented accommodation comprises of lounge/dining room, kitchen, utility cupboard, WC, three bedrooms and family bathroom. Viewing is essential. Energy Rating E. Council tax band A.

£1,050 PCM



3



1

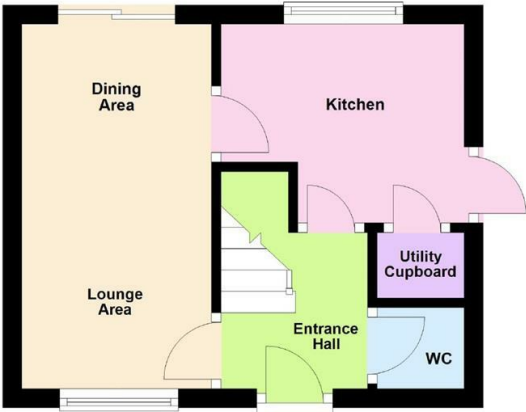


1



Simpson West

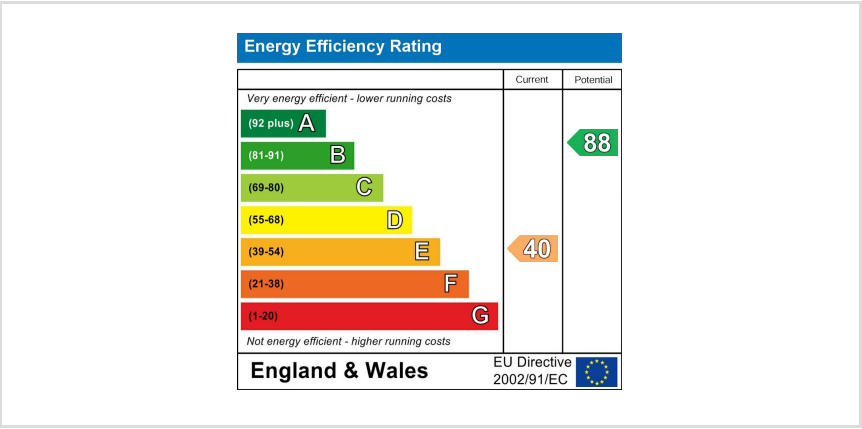
Ground Floor



First Floor



Floor plan not to scale - for guidance purposes only.  
Plan produced using PlanUp.





When you buy with Simpson West, you know **you'll be in safe hands**. From the moment you walk through our doors, we'll make you **feel truly welcome**. Our sales consultants and financial advisors will take you through **every step of the process**, offering **free expert advice** along the way, from help choosing the right mortgage and insurance through to finding your conveyancer. And if you need help selling your home too, **with over 20 years of local experience, you can trust us to get you moving**.



**Simpson  
West**

Making Every  
Journey Personal



01536 202007

[info@simpsonwest.co.uk](mailto:info@simpsonwest.co.uk)

<https://www.simpsonwest.co.uk/>

64 Corporation Street, Corby, Northants, NN17 1NH