



48 Wharfedale Road  
Corby, NN17 2AH



**Simpson West**

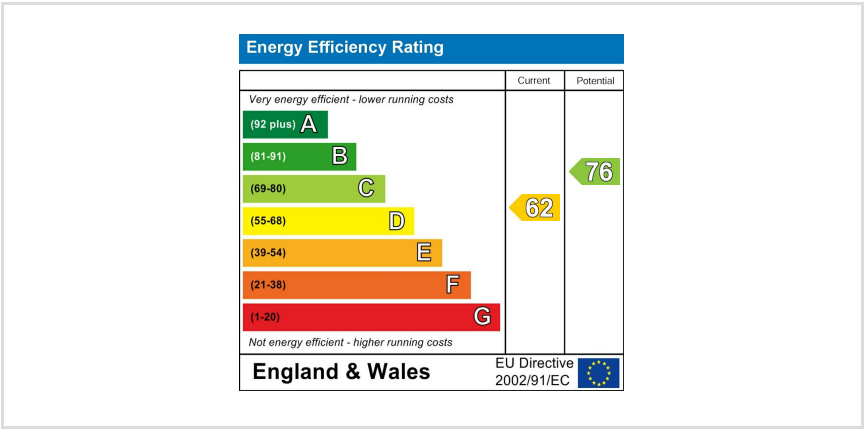
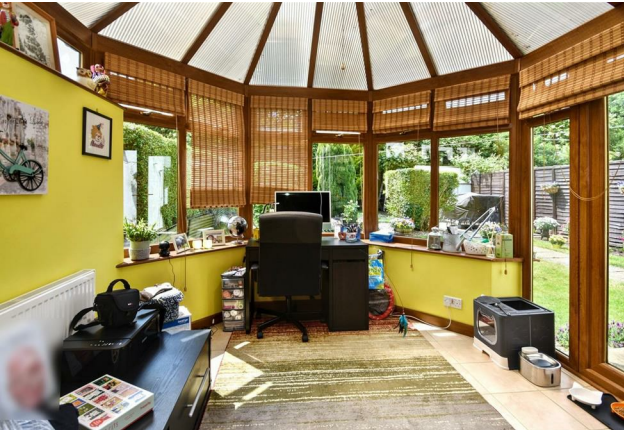
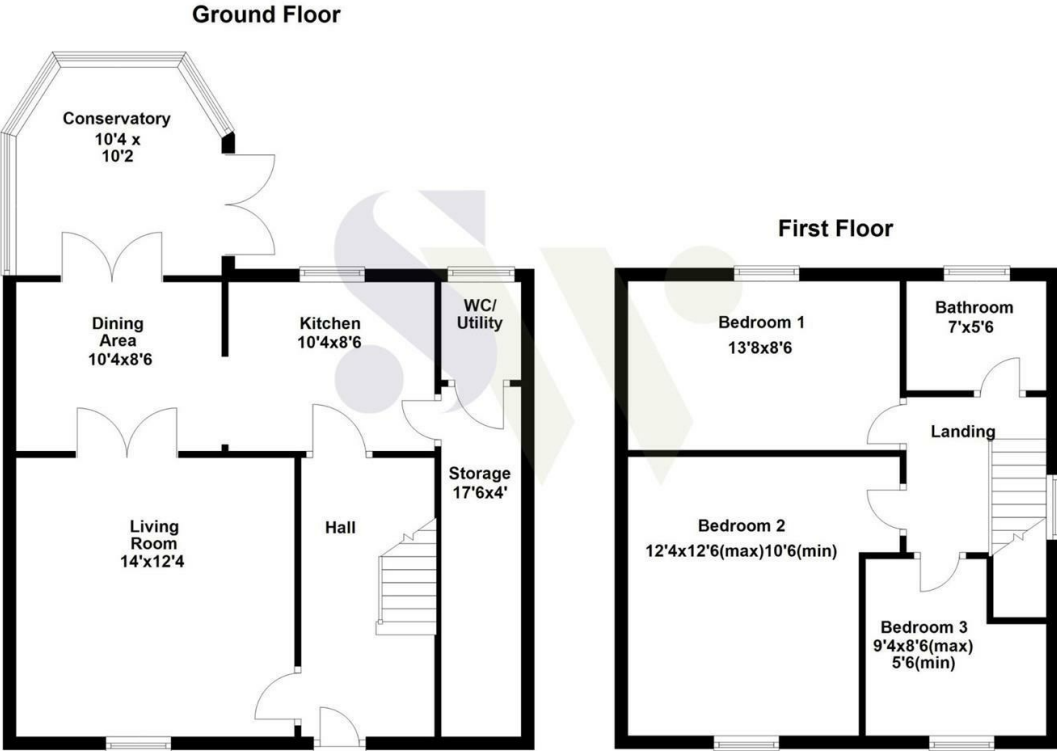


This well presented three bedroom semi detached property is set in an established and quiet residential road within the popular Shire area of Corby. The property is situated close to local schools, shops and other local amenities and is offered with NO ONWARD CHAIN. Inside, the property features a spacious hallway, a bright lounge with a feature fireplace, a separate dining room, a conservatory, a well-equipped kitchen with a utility room and a downstairs WC. Upstairs offers three good sized bedrooms, two with built-in storage and a modern family bathroom. Externally, there are beautifully maintained gardens to the front and rear, with a lawn, patio area, mature shrubs, and a garden shed. A large external store to the side of the property provides excellent additional storage or potential for further use. Early viewings are highly recommended to avoid disappointment. EPC rating - D. Council Tax band - A.

£190,000



Simpson West





When you buy with Simpson West, you know **you'll be in safe hands**. From the moment you walk through our doors, we'll make you **feel truly welcome**. Our sales consultants and financial advisors will take you through **every step of the process**, offering **free expert advice** along the way, from help choosing the right mortgage and insurance through to finding your conveyancer. And if you need help selling your home too, **with over 20 years of local experience, you can trust us to get you moving**.



**Simpson  
West**

Making Every  
Journey Personal



01536 202007

[info@simpsonwest.co.uk](mailto:info@simpsonwest.co.uk)

<https://www.simpsonwest.co.uk/>

64 Corporation Street, Corby, Northants, NN17 1NH