



2 Wroe Close

Corby, Northamptonshire NN18 8NQ



**Simpson West**



Located within the highly sought after Poppyfields development is this incredibly well presented FOUR/FIVE bedroom detached residence that is being offered to the market for sale with a complete chain. This home is situated on a desirable corner plot and is within walking distance to the local schools, shops and other amenities. Features include a spacious entrance hall, cloakroom w/c, living room, a modern fitted kitchen breakfast room, dining room, conservatory and the family room/bedroom five. To the first floor there are two large double bedrooms, the master of which boasts fitted wardrobes and an en-suite shower room, in addition to this there are two large single bedrooms and the main family bathroom. Outside is a landscaped garden that is fully enclosed and highly private, there is artificial lawn and a selection of mature shrubs with a storage space to the side of the property. To the front of the property there is a large block paved driveway providing ample off road parking. Early viewings are highly encouraged. Energy rating D. Council Tax Band D.

£347,000



4

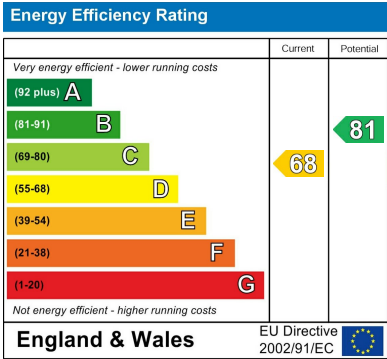
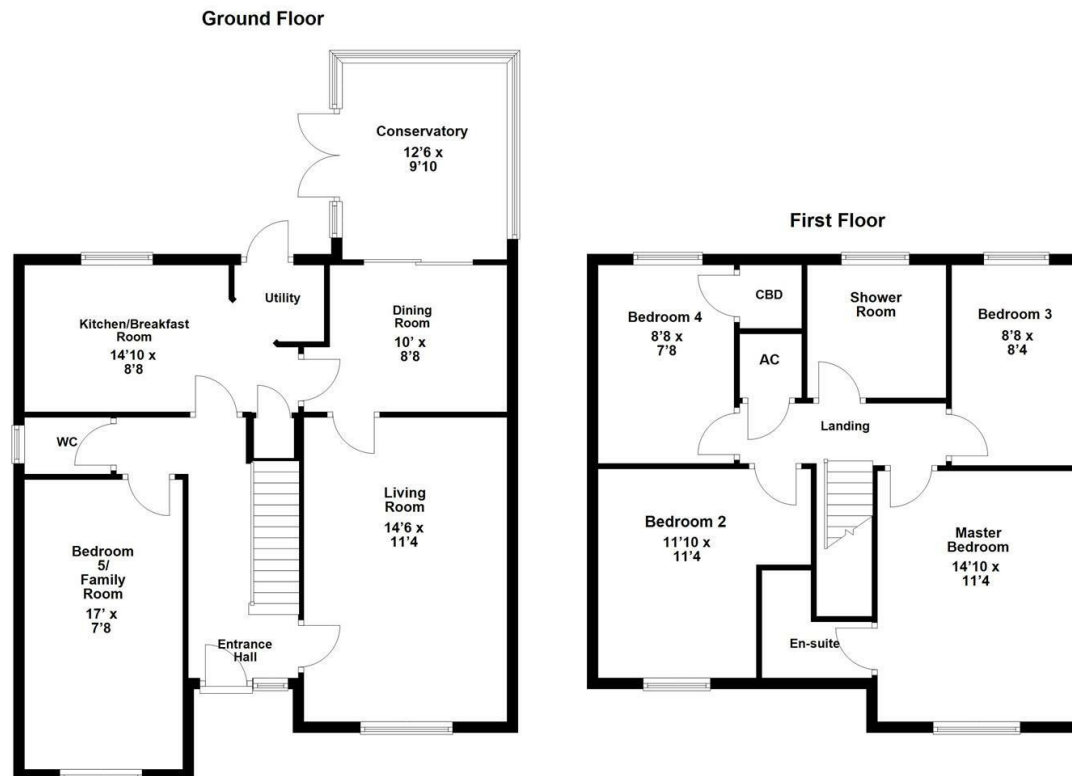


2



2







When you buy with Simpson West, you know **you'll be in safe hands**. From the moment you walk through our doors, we'll make you **feel truly welcome**. Our sales consultants and financial advisors will take you through **every step of the process**, offering **free expert advice** along the way, from help choosing the right mortgage and insurance through to finding your conveyancer. And if you need help selling your home too, **with over 20 years of local experience, you can trust us to get you moving**.



**Simpson  
West**

Making Every  
Journey Personal



01536 202007

[info@simpsonwest.co.uk](mailto:info@simpsonwest.co.uk)

<https://www.simpsonwest.co.uk/>

64 Corporation Street, Corby, Northants, NN17 1NH