



276 Stephenson Way  
Corby, NN17 1DQ



**Simpson West**



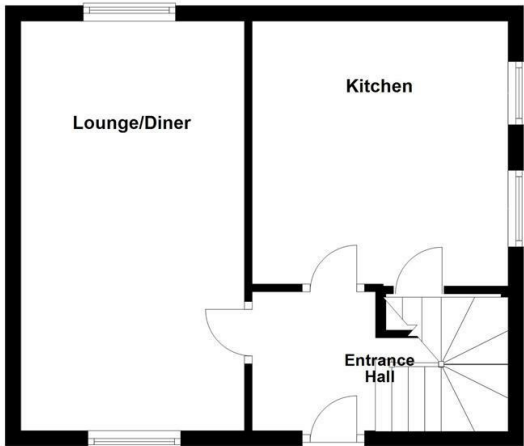
Situated in the sought-after Lloyds area, this traditionally built two-bedroom semi-detached home is offered for sale with no onward chain. The property enjoys a desirable location within walking distance of local schools, shops, and various amenities. The accommodation includes an entrance hall, fitted kitchen, a spacious lounge. Upstairs, you'll find two generously sized double bedrooms and a spacious bathroom. Outside, the home features a large, enclosed rear garden mainly laid to lawn. At the front, there is an enclosed front garden and off-road parking. Early viewing is highly recommended to avoid disappointment. Council Tax - A. EPC Rating - D.



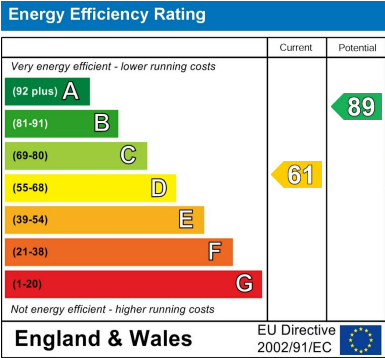
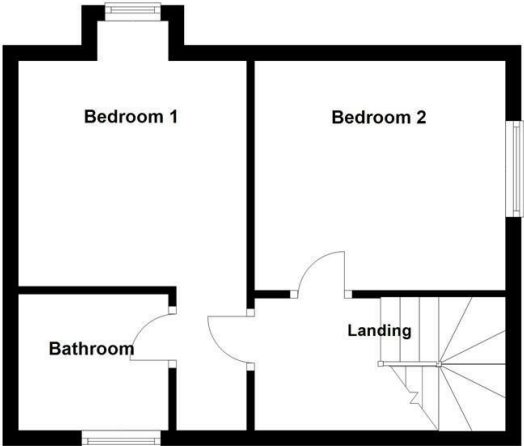
£170,000



Ground Floor



First Floor





When you buy with Simpson West, you know **you'll be in safe hands**. From the moment you walk through our doors, we'll make you **feel truly welcome**. Our sales consultants and financial advisors will take you through **every step of the process**, offering **free expert advice** along the way, from help choosing the right mortgage and insurance through to finding your conveyancer. And if you need help selling your home too, **with over 20 years of local experience, you can trust us to get you moving**.



**Simpson  
West**

Making Every  
Journey Personal



01536 202007

[info@simpsonwest.co.uk](mailto:info@simpsonwest.co.uk)

<https://www.simpsonwest.co.uk/>

64 Corporation Street, Corby, Northants, NN17 1NH