



100 Hempland Close  
Corby, Northamptonshire NN18 8LT



**Simpson West**



Enjoying a prime position within the much sought after Great Oakley area, is this rarely available detached residence which is presented in excellent condition throughout. This lovely family home provides spacious living accommodation to include a reception hall, cloakroom/WC, living room, separate dining room which has most recently been used as an additional bedroom, and a superb kitchen/dining room and utility room. The first floor offers FOUR BEDROOMS with the master boasting fitted wardrobes and refitted en-suite facilities. There is also a refitted family bathroom.

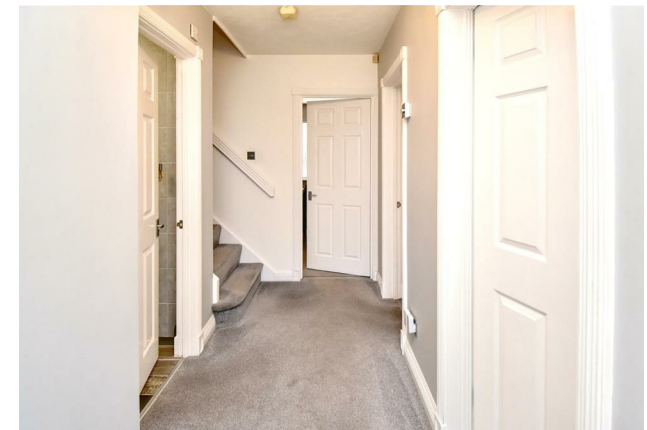
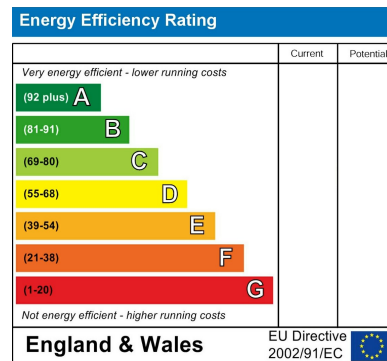
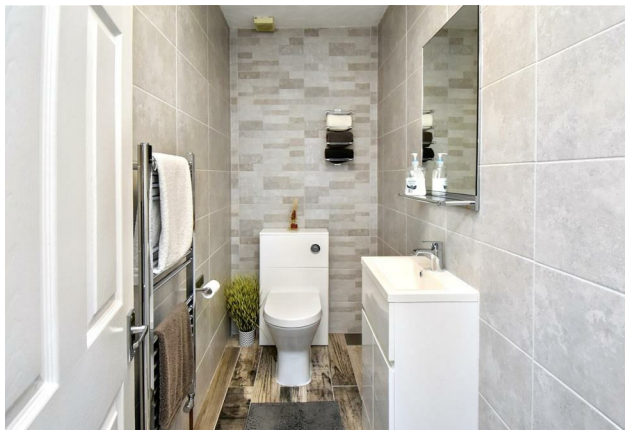
Outside an excellent sized frontage provides off road parking for several vehicles to the front of the DOUBLE GARAGE. The rear gardens lead with patio area to an elevated lawn which is complimented by a variety of established greenery.

An early visit is strongly recommended to the property which we believe will attract considerable interest.



£450,000







When you buy with Simpson West, you know **you'll be in safe hands**. From the moment you walk through our doors, we'll make you **feel truly welcome**. Our sales consultants and financial advisors will take you through **every step of the process**, offering **free expert advice** along the way, from help choosing the right mortgage and insurance through to finding your conveyancer. And if you need help selling your home too, **with over 20 years of local experience, you can trust us to get you moving**.



**Simpson  
West**

Making Every  
Journey Personal



01536 202007

[info@simpsonwest.co.uk](mailto:info@simpsonwest.co.uk)

<https://www.simpsonwest.co.uk/>

64 Corporation Street, Corby, Northants, NN17 1NH