



51 Finch Hatton Drive  
Gretton, NN17 3DQ



**Simpson West**

Situated in the heart of the sought after village of Gretton, this three bedroom link-detached property presents a fantastic opportunity for those looking to create a forever family home. The property benefits from a peaceful cul-de-sac position and enjoys uninterrupted views over open fields to the rear, perfect for nature lovers and those seeking a more rural outlook. Internally, the accommodation features an entrance hall, a spacious lounge, a large kitchen/diner overlooking the rear garden, and a conservatory. Upstairs are three well-proportioned bedrooms, all with fitted wardrobes and a family bathroom. Outside, the property boasts a private rear garden backing onto open countryside, a single garage which runs the length of the house and off-road parking to the front. Offered with no onward chain, this is a rare chance to acquire a home in this desirable village location, just a short drive from Corby and Uppingham, within easy reach of local amenities and well regarded village primary school and nearby secondary schools. Viewing is highly recommended to appreciate the potential and setting of this unique property. EPC rating D. Council Tax Band C.

£269,950



3



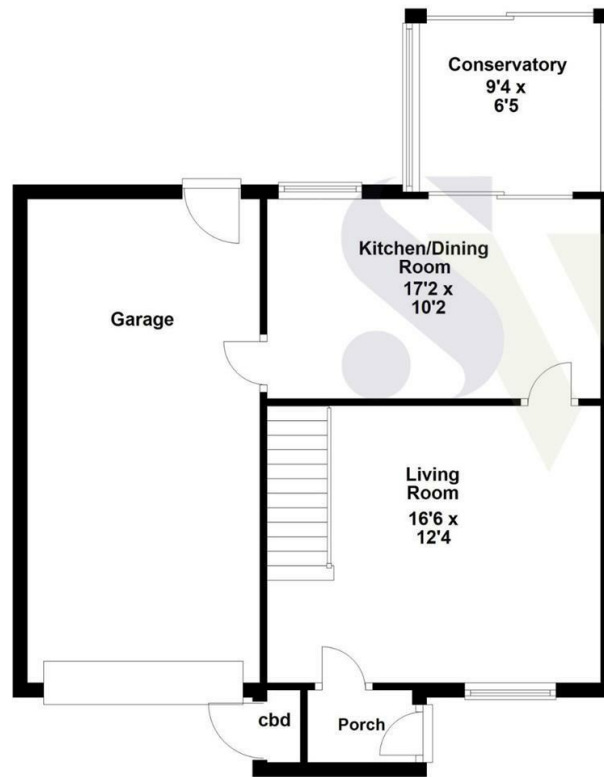
1



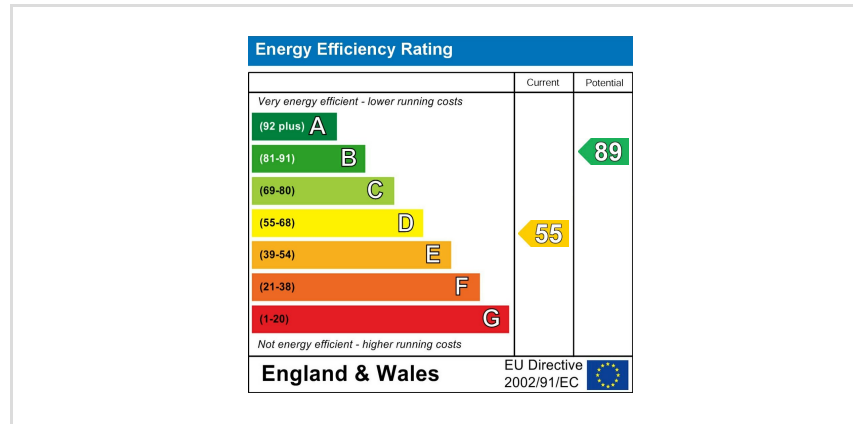
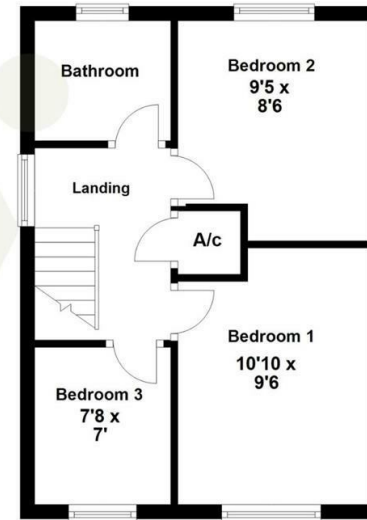
2



### Ground Floor



### First Floor



When you buy with Simpson West, you know **you'll be in safe hands**. From the moment you walk through our doors, we'll make you **feel truly welcome**. Our sales consultants and financial advisors will take you through **every step of the process**, offering **free expert advice** along the way, from help choosing the right mortgage and insurance through to finding your conveyancer. And if you need help selling your home too, **with over 20 years of local experience, you can trust us to get you moving**.



**Simpson  
West**

Making Every  
Journey Personal



01536 202007

[info@simpsonwest.co.uk](mailto:info@simpsonwest.co.uk)

<https://www.simpsonwest.co.uk/>

64 Corporation Street, Corby, Northants, NN17 1NH