



27 Ashby Street  
Corby, NN17 5FA



**Simpson West**



Simpson West Lettings are delighted to offer for rent this very well presented two double bedroom house which is situated in a prime position within the prestigious area of Priors Hall Park. This modern two bedroom Marylebone design end of terrace property has many features throughout and proudly boasts entrance hall, ground floor cloakroom/WC, a fitted kitchen, a 14'6x13' lounge/dining room and patio doors to the rear garden. Upstairs there is a master bedroom with an en suite shower room and built in mirrored wardrobes, there is a second double bedroom and a bathroom. The property also benefits gas radiator central heating and double glazing throughout. Outside there is an easy maintenance garden to the rear and a driveway. Viewing is highly recommended. Energy Rating C. Council Tax Band B.



£950 Per Calendar Month



2



1



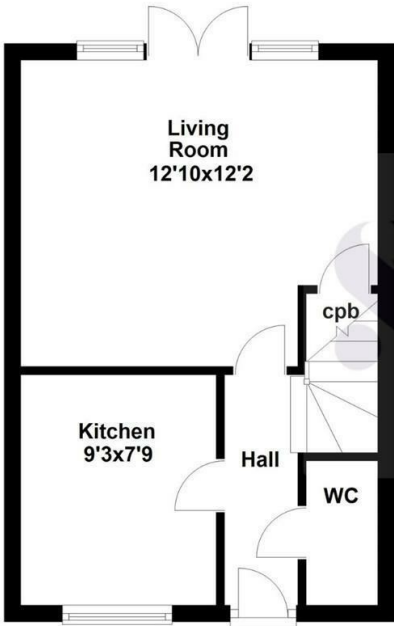
1



Simpson West

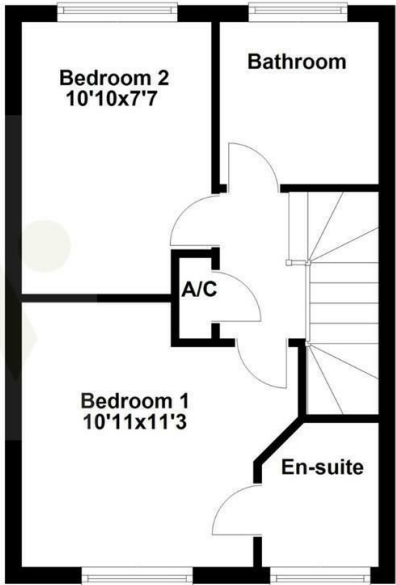
Ground Floor

Approx. 28.6 sq. metres (307.9 sq. feet)



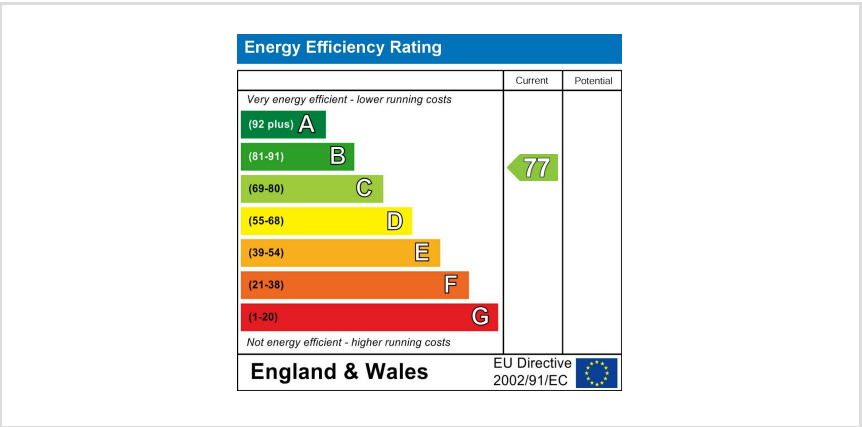
First Floor

Approx. 28.6 sq. metres (307.9 sq. feet)



Total area: approx. 57.2 sq. metres (615.9 sq. feet)

Floor plan not to scale - for guidance purposes only.  
Plan produced using PlanUp.



When you buy with Simpson West, you know **you'll be in safe hands**. From the moment you walk through our doors, we'll make you **feel truly welcome**. Our sales consultants and financial advisors will take you through **every step of the process**, offering **free expert advice** along the way, from help choosing the right mortgage and insurance through to finding your conveyancer. And if you need help selling your home too, **with over 20 years of local experience, you can trust us to get you moving**.



**Simpson  
West**

Making Every  
Journey Personal



01536 202007

[info@simpsonwest.co.uk](mailto:info@simpsonwest.co.uk)

<https://www.simpsonwest.co.uk/>

64 Corporation Street, Corby, Northants, NN17 1NH