



39 Mantlefield Road  
Corby, Northamptonshire NN18 0AR



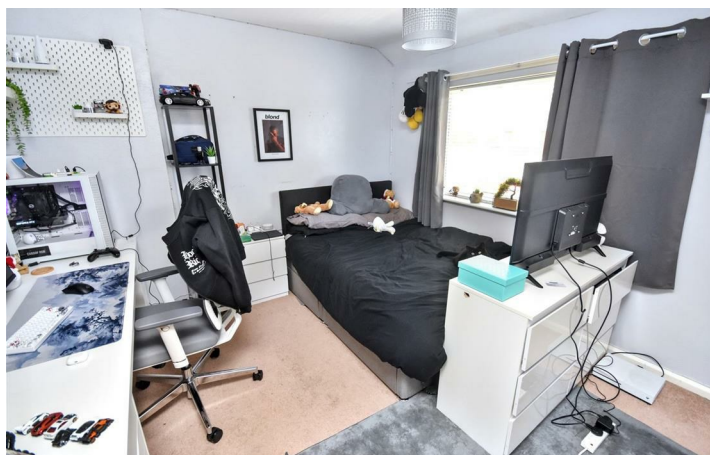
**Simpson West**



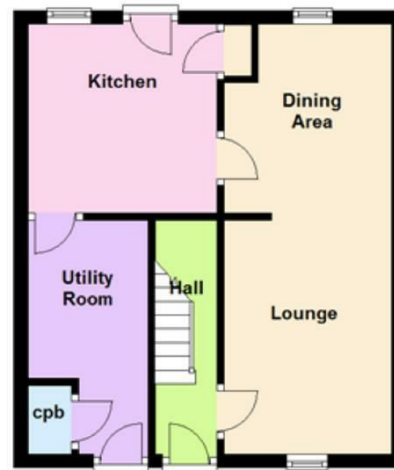
Simpson West are pleased to offer this established three bedroom end town house situated within the popular Beanfield area and offering features to include, entrance hall, lounge with feature fireplace, fitted kitchen with separate utility room. Upstairs there are two double bedrooms, a good sized single and a family bathroom. Outside is an enclosed lawned garden. The property is due to be repainted and recarpeted. Energy Rating TBC. Council Tax Band A.



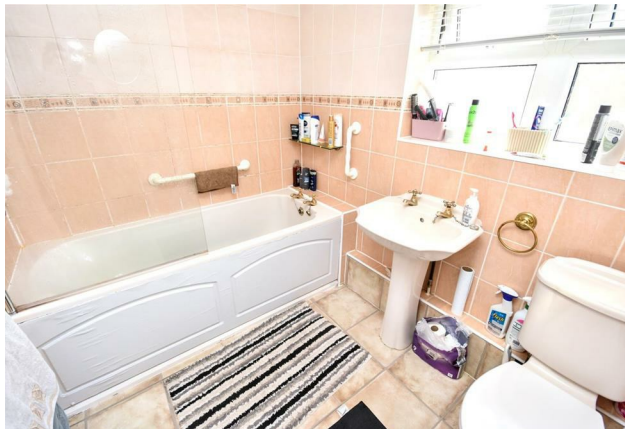
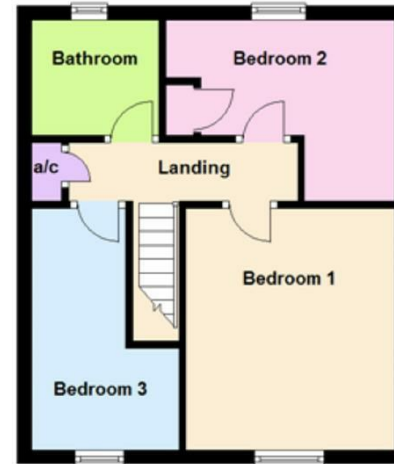
£1,000 Per Calendar Month



Ground Floor



First Floor



#### Energy Efficiency Rating

	Current	Potential
Very energy efficient - lower running costs		
(92 plus) <b>A</b>		
(81-91) <b>B</b>		
(69-80) <b>C</b>		
(55-68) <b>D</b>		
(39-54) <b>E</b>		
(21-38) <b>F</b>		
(1-20) <b>G</b>		
Not energy efficient - higher running costs		
<b>England &amp; Wales</b>	EU Directive 2002/91/EC	

67 77





When you buy with Simpson West, you know **you'll be in safe hands**. From the moment you walk through our doors, we'll make you **feel truly welcome**. Our sales consultants and financial advisors will take you through **every step of the process**, offering **free expert advice** along the way, from help choosing the right mortgage and insurance through to finding your conveyancer. And if you need help selling your home too, **with over 20 years of local experience, you can trust us to get you moving**.



**Simpson  
West**

Making Every  
Journey Personal



01536 202007

[info@simpsonwest.co.uk](mailto:info@simpsonwest.co.uk)

<https://www.simpsonwest.co.uk/>

64 Corporation Street, Corby, Northants, NN17 1NH