



12 Harden Close  
Corby, NN18 8JW



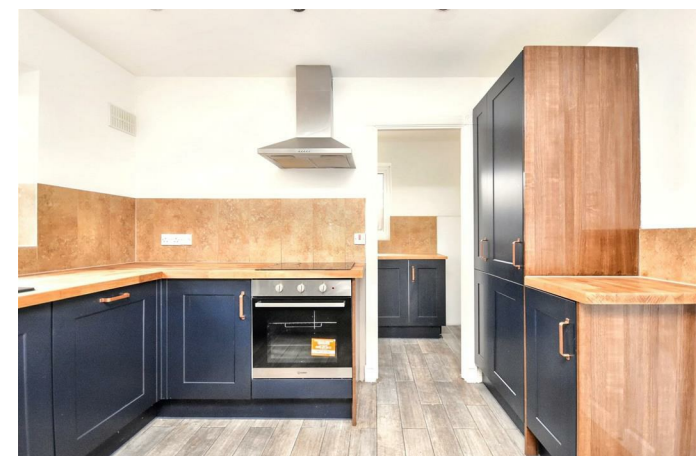
**Simpson West**

Simpson West are delighted to offer this rarely available FOUR bedroom family home that is located within the highly popular Great Oakley area. The property occupies a pleasant position with a south facing garden and is within walking distance to the local school, shops and other amenities. Features include an entrance hall, cloakroom w/c, living room with log burning stove and stylish bay window seat, in addition there is the modern fitted kitchen dining room with utility room. To the first floor there are three bedrooms, one of which boasts an en-suite shower room, in addition there is an office area and family bathroom. To the second floor is a converted loft space which is now the master bedroom with fitted storage and en-suite bathroom and shower room. Outside there is a landscaped garden with large decked area, this is southerly facing and is fully enclosed. To the front is off road parking leading to a single integral garage. Early viewings are a must. Energy rating C. Council Tax Band D.



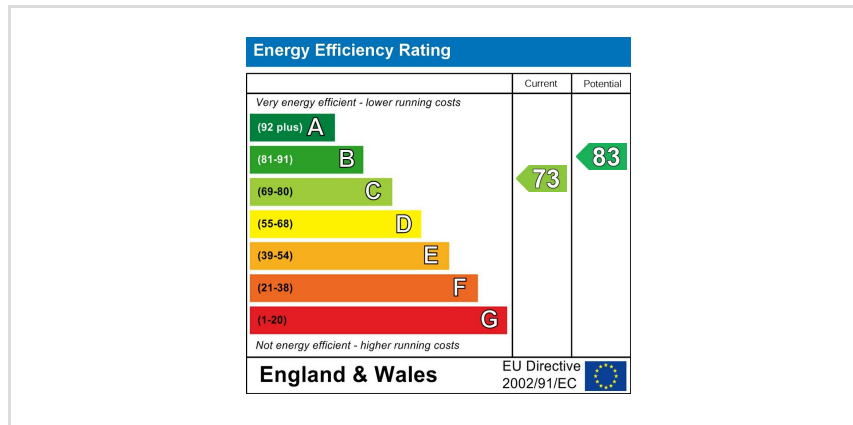
£1,500 Per Calendar Month

4 3 1





Floor plan not to scale - for guidance purposes only.  
 Floor plan created by Simpson West for their use.  
 Plan produced using PlanUp.



When you buy with Simpson West, you know **you'll be in safe hands**. From the moment you walk through our doors, we'll make you **feel truly welcome**. Our sales consultants and financial advisors will take you through **every step of the process**, offering **free expert advice** along the way, from help choosing the right mortgage and insurance through to finding your conveyancer. And if you need help selling your home too, **with over 20 years of local experience, you can trust us to get you moving**.



**Simpson  
West**

Making Every  
Journey Personal



01536 202007

[info@simpsonwest.co.uk](mailto:info@simpsonwest.co.uk)

<https://www.simpsonwest.co.uk/>

64 Corporation Street, Corby, Northants, NN17 1NH