



4 Harvest Close
Corby, NN17 3LE



Simpson West

Occupying an attractive position overlooking a public green space within the highly sought after village of Weldon, is this rarely available detached property which sits on an excellent sized plot. The property offers accommodation to the ground floor to include a reception hall, living room, utility room, and a kitchen/dining room with breakfast bar, a range of fitted appliances and french doors opening to the rear garden. The first floor provides FOUR BEDROOMS and a family bathroom, with the master bedroom benefiting from fitted wardrobe and an en-suite. Outside, there is as spacious frontage with a SINGLE GARAGE and parking for 2-3 vehicles in front. The rear garden is mainly laid to lawn with a large patio area directly accessed from both the kitchen and the lounge and enjoys a south-westerly aspect.

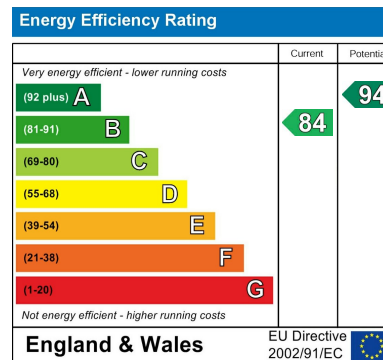
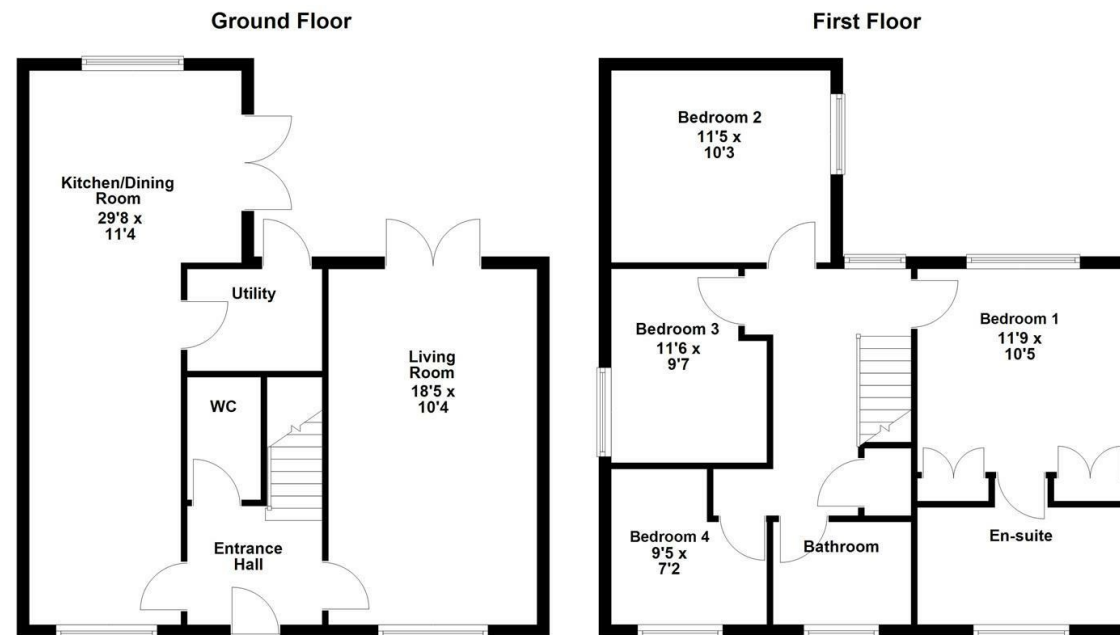
Only by visiting this property will its overall size, condition and plot be fully appreciated.

Energy Rating B. Council Tax Band E.

£420,000



Simpson West



When you buy with Simpson West, you know **you'll be in safe hands**. From the moment you walk through our doors, we'll make you **feel truly welcome**. Our sales consultants and financial advisors will take you through **every step of the process**, offering **free expert advice** along the way, from help choosing the right mortgage and insurance through to finding your conveyancer. And if you need help selling your home too, **with over 20 years of local experience, you can trust us to get you moving**.



**Simpson
West**

Making Every
Journey Personal



01536 202007

info@simpsonwest.co.uk

<https://www.simpsonwest.co.uk/>

64 Corporation Street, Corby, Northants, NN17 1NH