



9 Walnut Close

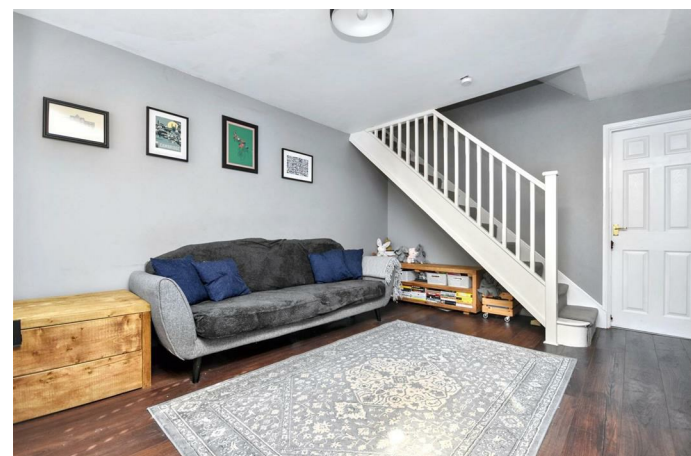
Corby, Northamptonshire NN17 3EE



Simpson West

Located within the highly sought after village of Weldon is this rarely available and recently refurbished THREE bedroom family home that is being offered to the market for sale. The property itself is well positioned nestled away within a quiet cul-de-sac and is close to the village school. Features include an entrance hall, lounge and recently refitted kitchen/dining room boasting integrated dishwasher and range cooker with a door leading to the rear garden. To the first floor there are two large double bedrooms with the master and second bedrooms boasting fitted wardrobes, in addition there is a generous third bedroom and family bathroom complete with wash hand basin, vanity unit, w/c, bath and chrome towel rail. To the rear is an established and private rear garden that is fully enclosed by timber fencing with access into the single garage. At the front is off road parking. Early viewings are highly advised to avoid missing out on this rare opportunity. Energy rating C. Council Tax Band C.

£235,000



Simpson West

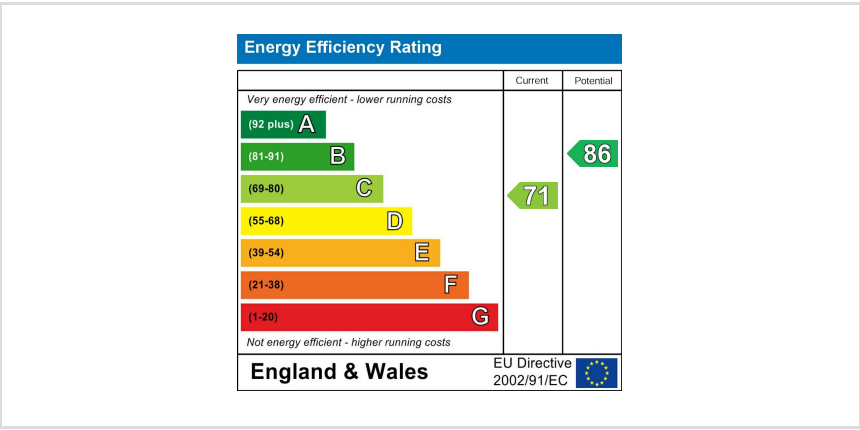
Ground Floor



First Floor



Floor plan not to scale - for guidance purposes only.
Plan produced using PlanUp.



When you buy with Simpson West, you know **you'll be in safe hands**. From the moment you walk through our doors, we'll make you **feel truly welcome**. Our sales consultants and financial advisors will take you through **every step of the process**, offering **free expert advice** along the way, from help choosing the right mortgage and insurance through to finding your conveyancer. And if you need help selling your home too, **with over 20 years of local experience, you can trust us to get you moving**.



**Simpson
West**

Making Every
Journey Personal



01536 202007

info@simpsonwest.co.uk

<https://www.simpsonwest.co.uk/>

64 Corporation Street, Corby, Northants, NN17 1NH