



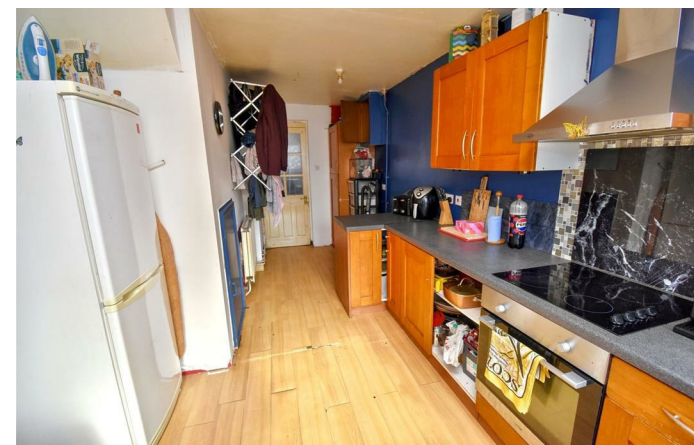
45 Glastonbury Road
Corby, Northamptonshire NN18 0DD

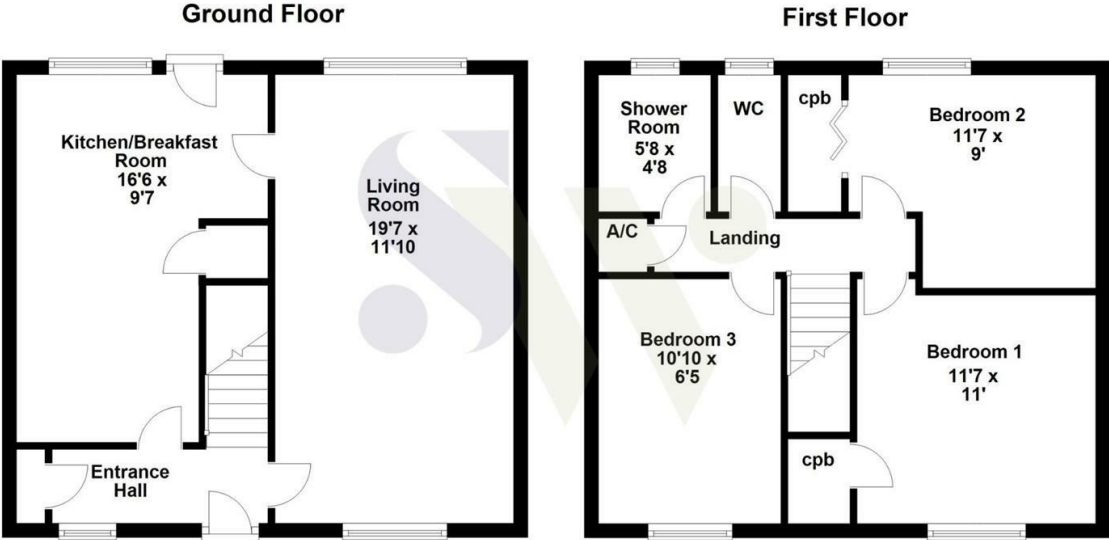


Simpson West

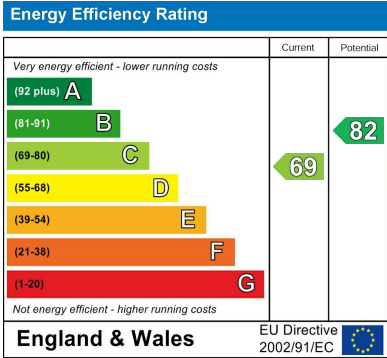
Being situated within the much sought after Beanfield area, is this rarely available, highly spacious town house which is being offered to the market with NO CHAIN. Although in need of some improvement's accommodation includes a reception porch, entrance hall, living/dining room, and kitchen/breakfast room. The first floor provides THREE BEDROOMS, bathroom, and separate WC. Outside, there is an enclosed frontage and the rear gardens are predominately laid to lawn. Make your appointment to view now! Energy Rating C. Council Tax Band A.

£165,000





Floor plan not to scale - for guidance purposes only.
Floor plan created by Simpson West for their use.
Plan produced using PlanUp.



When you buy with Simpson West, you know **you'll be in safe hands**. From the moment you walk through our doors, we'll make you **feel truly welcome**. Our sales consultants and financial advisors will take you through **every step of the process**, offering **free expert advice** along the way, from help choosing the right mortgage and insurance through to finding your conveyancer. And if you need help selling your home too, **with over 20 years of local experience, you can trust us to get you moving**.



**Simpson
West**

Making Every
Journey Personal



01536 202007

info@simpsonwest.co.uk

<https://www.simpsonwest.co.uk/>

64 Corporation Street, Corby, Northants, NN17 1NH