



43 Ollerton Walk

Corby, Northamptonshire NN18 0HR



Simpson West

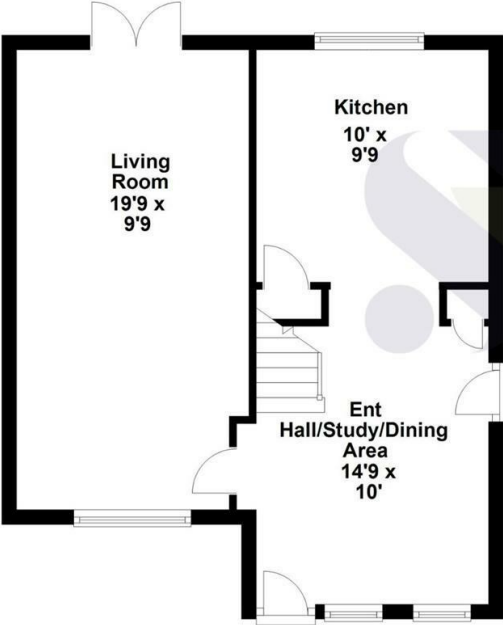
Located within the highly popular Beanfield area is this rarely available THREE bedroom end of terrace family home that is being offered to the market for sale in immaculate condition and with APPROVED PLANNING for a single storey extension to the side of the property. The property occupies a pleasant large corner plot and is also located within walking distance to the local schools, shops, public transport and other local amenities. Features include an open plan dinning room , a modern fitted kitchen over looking the rear garden, large living room with doors leading to the rear garden. To the first floor there are three bedrooms and the family bathroom comprising of a three piece suite. Outside to the rear and the side is a large fully enclosed garden benefits from a decked entertaining area to the rear and a patio area to the side of the house. The front there is an attractive lawnd garden over looking the park green. Early viewings are an absolute must.

Energy rating C. Council Tax Band A.

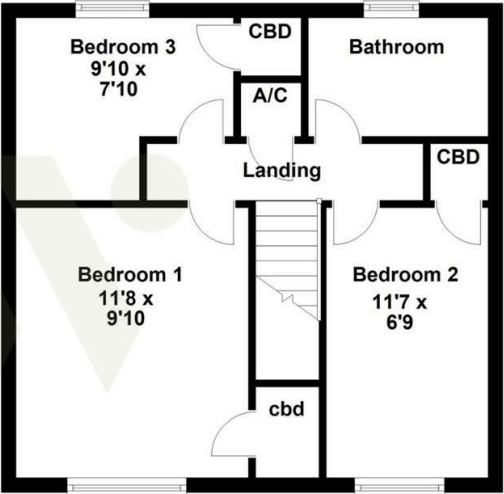
£205,000



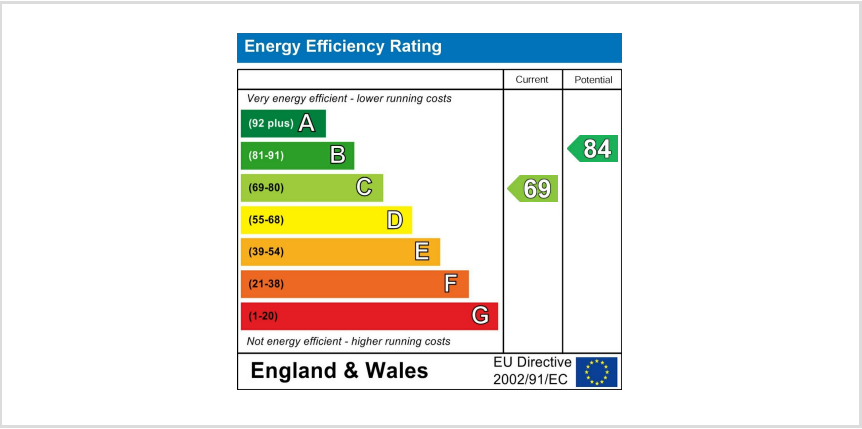
Ground Floor



First Floor



Floor plan not to scale - for guidance purposes only.
Floor plan created by Simpson West for their use.
Plan produced using PlanUp.



When you buy with Simpson West, you know **you'll be in safe hands**. From the moment you walk through our doors, we'll make you **feel truly welcome**. Our sales consultants and financial advisors will take you through **every step of the process**, offering **free expert advice** along the way, from help choosing the right mortgage and insurance through to finding your conveyancer. And if you need help selling your home too, **with over 20 years of local experience, you can trust us to get you moving**.



**Simpson
West**

Making Every
Journey Personal



01536 202007

info@simpsonwest.co.uk

<https://www.simpsonwest.co.uk/>

64 Corporation Street, Corby, Northants, NN17 1NH