



10 Jura Close

Corby, Northamptonshire NN17 2PW



**Simpson West**



Located within the ever popular Shire area within Corby is this immaculately presented two double bedroom residence that is being offered to the market for sale with no onward chain. The property occupies a pleasant position being within walking distance to the local school, shops and other amenities. Features include an entrance hall with large storage cupboard, a modern fitted kitchen dining room and the large living room. To the first floor there are two large double bedrooms, the master boasts fitted wardrobes, in addition there is a separate bathroom and w/c. Outside there is a low maintenance garden that is completely paved with an outdoor pergola area. Ample communal car parking is available nearby. Early viewings are a must. Energy rating C. Council Tax Band A.

£184,995



2



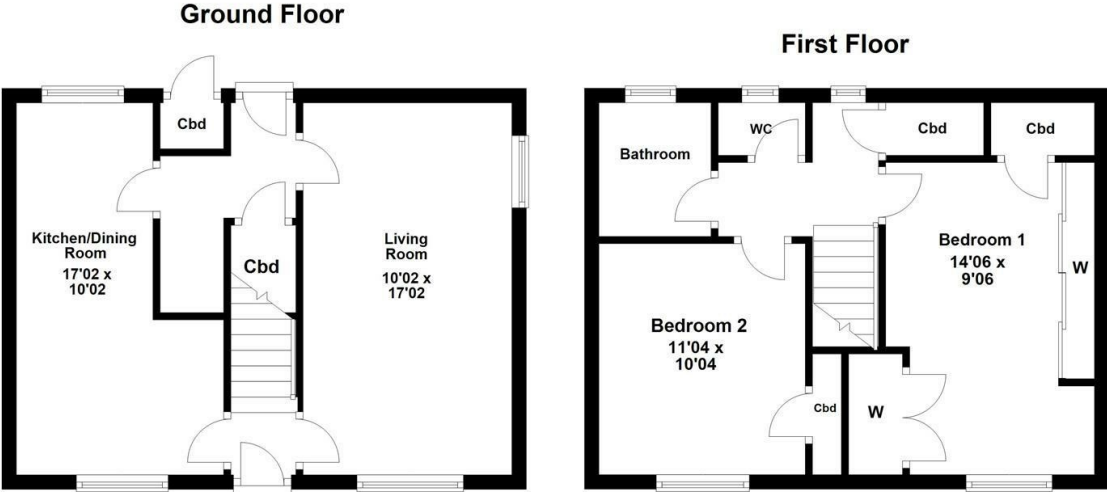
1



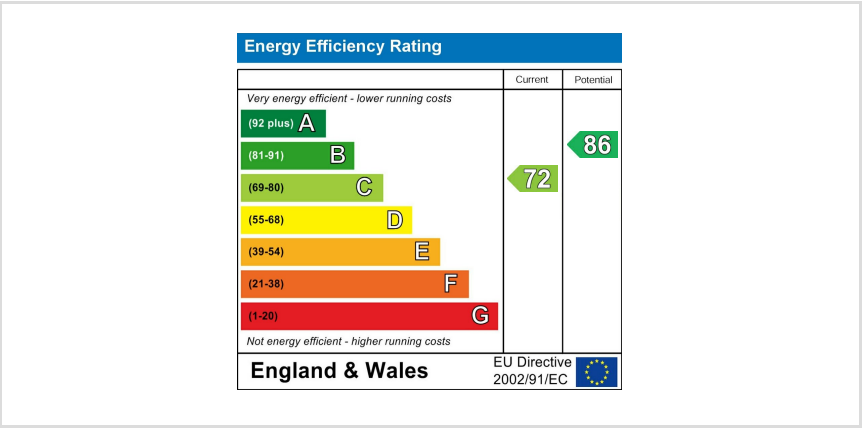
1



Simpson West



Floor plan not to scale - for guidance purposes only.  
Floor plan created by Simpson West for their use.  
Plan produced using PlanUp.



When you buy with Simpson West, you know **you'll be in safe hands**. From the moment you walk through our doors, we'll make you **feel truly welcome**. Our sales consultants and financial advisors will take you through **every step of the process**, offering **free expert advice** along the way, from help choosing the right mortgage and insurance through to finding your conveyancer. And if you need help selling your home too, **with over 20 years of local experience, you can trust us to get you moving**.



**Simpson  
West**

Making Every  
Journey Personal



01536 202007

[info@simpsonwest.co.uk](mailto:info@simpsonwest.co.uk)

<https://www.simpsonwest.co.uk/>

64 Corporation Street, Corby, Northants, NN17 1NH