



83 Newark Drive
Corby, NN18 0EZ



Simpson West

Located within the highly popular Beanfield area is this rarely available THREE double bedroom semi detached residence that is being offered to the market for sale with no onward chain. The property occupies a pleasant position being within walking distance to the local schools, shops and other amenities. Features include an entrance hall, cloakroom w/c, a modern fitted that has been refitted and the large living dining room with doors leading to the rear garden. To the first floor there are three double bedrooms and the shower room comprising of a three piece suite. Outside is a large fully enclosed garden that is south facing, this benefits from a patio area by the house. The front is enclosed by a low level wall, off road parking could be added subject to obtaining relevant planning consent. Early viewings are an absolute must. Energy rating D. Council Tax Band B.

£215,000



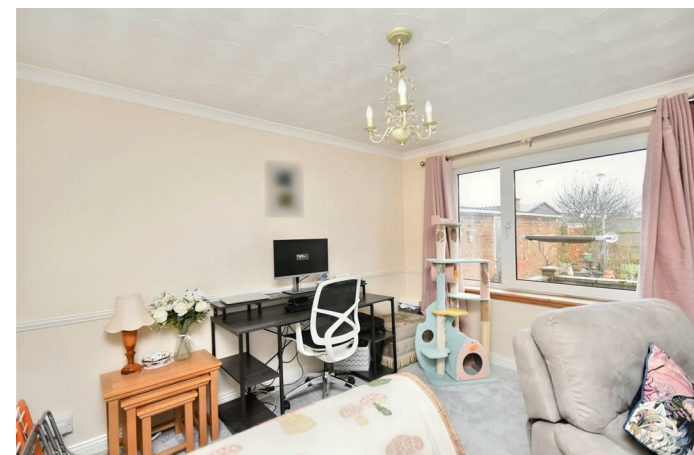
3



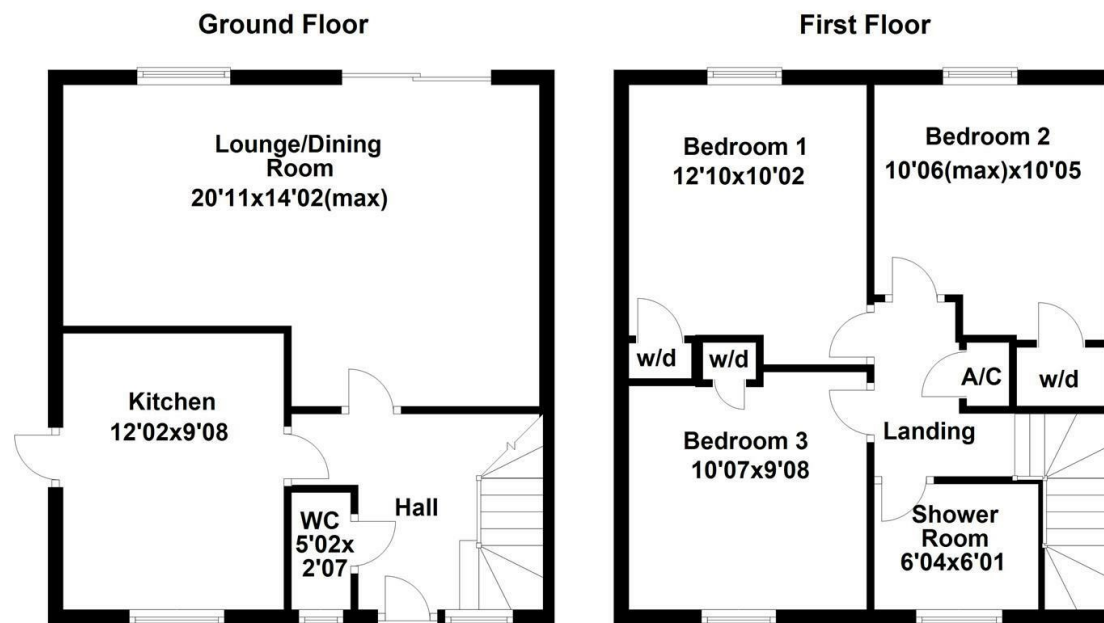
1



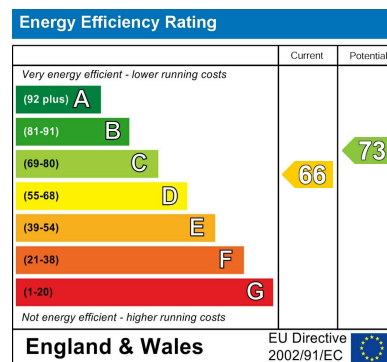
1



Simpson West



Floor plan not to scale - for guidance purposes only.
 Floor plan created by Simpson West for their use.
 Plan produced using PlanUp.



When you buy with Simpson West, you know **you'll be in safe hands**. From the moment you walk through our doors, we'll make you **feel truly welcome**. Our sales consultants and financial advisors will take you through **every step of the process**, offering **free expert advice** along the way, from help choosing the right mortgage and insurance through to finding your conveyancer. And if you need help selling your home too, **with over 20 years of local experience, you can trust us to get you moving**.



**Simpson
West**

Making Every
Journey Personal



01536 202007

info@simpsonwest.co.uk

<https://www.simpsonwest.co.uk/>

64 Corporation Street, Corby, Northants, NN17 1NH