



Southfield Road
Corby, NN17 3BX



Simpson West

Enjoying a pleasant position within the highly sought after village of Gretton, is this rarely available family home which is being offered for sale with NO CHAIN. Offering features and accommodation to include gas central heating, a reception hall, living room with fireplace and an archway leads through to a solid oak fitted kitchen/breakfast room with integrated appliances and a separate utility area. There is also a conservatory. The first floor provides THREE BEDROOMS and a four-piece bathroom.

Outside, there is an enclosed lawned front garden whilst the rear is also laid to lawn with shrubs and bushes to borders and there is also a large workshop with a separate open wood store.

An early visit is highly recommended to the property which is certain to attract considerable interest!

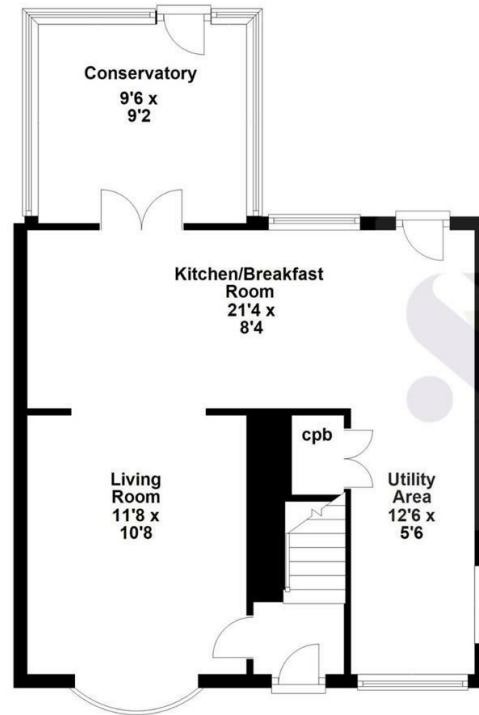
Energy Rating C. Council Tax Band B.



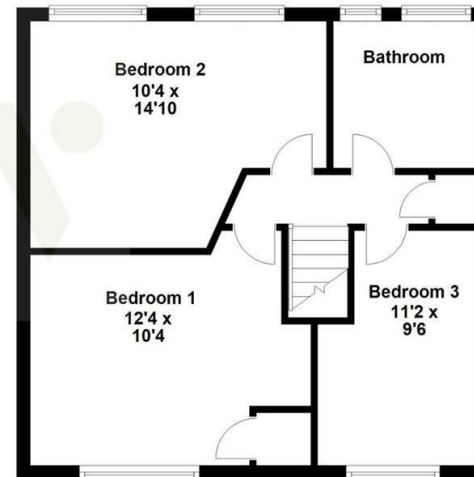
£224,950



Ground Floor



First Floor



Floor plan not to scale - for guidance purposes only.
Floor plan created by Simpson West for their use.
Plan produced using PlanUp.



Energy Efficiency Rating

	Current	Potential
Very energy efficient - lower running costs		
(92 plus) A		
(81-91) B		84
(69-80) C	71	
(55-68) D		
(39-54) E		
(21-38) F		
(1-20) G		
Not energy efficient - higher running costs		
England & Wales	EU Directive 2002/91/EC	



When you buy with Simpson West, you know **you'll be in safe hands**. From the moment you walk through our doors, we'll make you **feel truly welcome**. Our sales consultants and financial advisors will take you through **every step of the process**, offering **free expert advice** along the way, from help choosing the right mortgage and insurance through to finding your conveyancer. And if you need help selling your home too, **with over 20 years of local experience, you can trust us to get you moving**.



**Simpson
West**

Making Every
Journey Personal



01536 202007

info@simpsonwest.co.uk

<https://www.simpsonwest.co.uk/>

64 Corporation Street, Corby, Northants, NN17 1NH