



5 Wareham Green
Corby, NN18 0AD

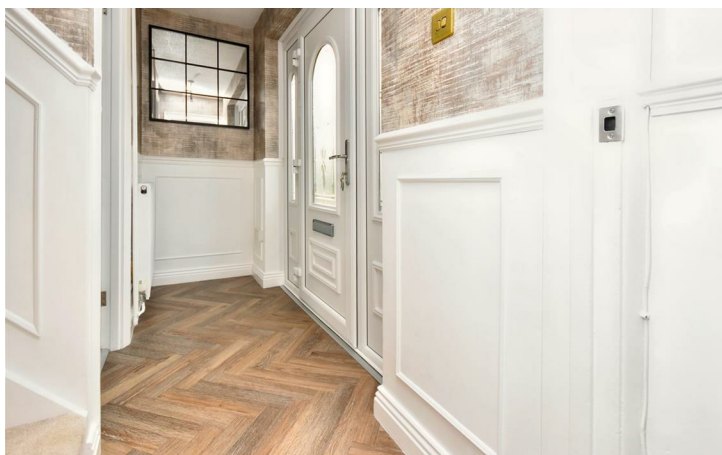
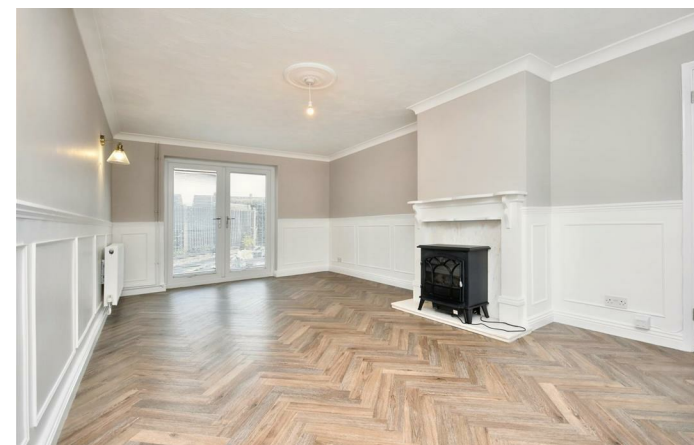


Simpson West

SOLD PRIOR TO MARKETING!!!

Located within the ever popular Beanfield area of Corby is this beautifully presented and rarely available THREE bedroom family home that is being offered to the market for sale with NO CHAIN in immaculate condition. The property occupies a pleasant position and is within walking distance to the local schools, public transport, shops and other amenities. Features include a spacious entrance hall, a large living/dining room and a fitted kitchen/breakfast room. To the first floor there are two double bedrooms with storage, a single bedroom and the main family bathroom. To the rear is a landscaped garden with a paved patio area, a raised decked seating area and is fully enclosed with gated access to the back of the property. To the front is a beautifully landscaped low maintenance garden. Early viewings is an absolute must! Energy Rating D. Council tax band A.

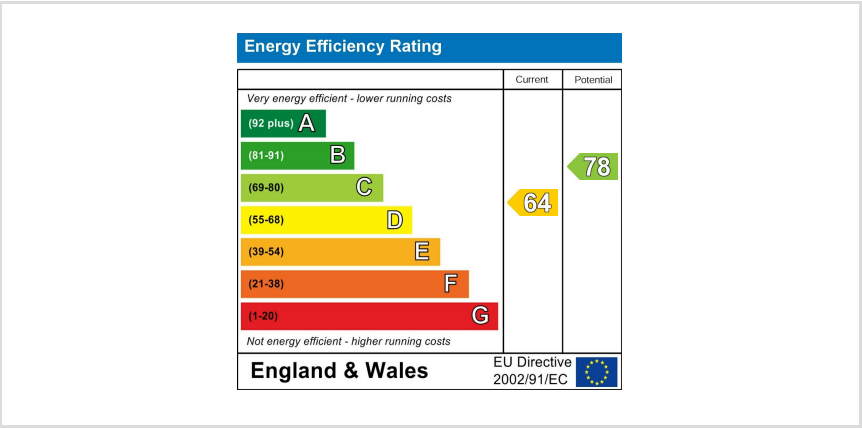
£199,950



Simpson West



Floor plan not to scale - for guidance purposes only.
Floor plan created by Simpson West for their use.
Plan produced using PlanUp.



When you buy with Simpson West, you know **you'll be in safe hands**. From the moment you walk through our doors, we'll make you **feel truly welcome**. Our sales consultants and financial advisors will take you through **every step of the process**, offering **free expert advice** along the way, from help choosing the right mortgage and insurance through to finding your conveyancer. And if you need help selling your home too, **with over 20 years of local experience, you can trust us to get you moving**.



**Simpson
West**

Making Every
Journey Personal



01536 202007

info@simpsonwest.co.uk

<https://www.simpsonwest.co.uk/>

64 Corporation Street, Corby, Northants, NN17 1NH