



3 Lilford Place

Corby, Northamptonshire NN17 5ED

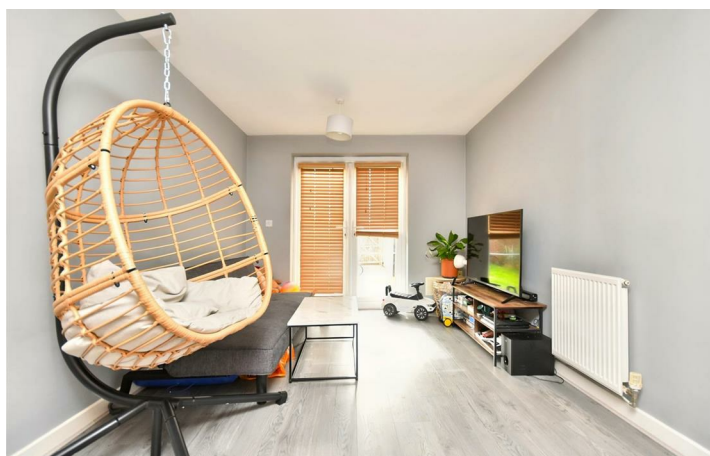


Simpson West

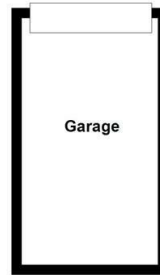
Simpson West are delighted to offer to the market for sale with no onward chain this rarely available Lagon Homes built FOUR double bedroom family residence located within the prestigious Priors Hall Park. The property itself is in a prime location facing onto the landscaped town gardens and is within a stones throw to the local school and other amenities. Features include a large entrance hall, cloakroom w/c, large kitchen dining room and the living room with patio doors leading to the rear garden. To the first floor there is the master bedroom with walk in wardrobe and en-suite shower room and bedroom two. To the second floor there are two large double bedrooms and the main family bathroom with three piece suite. At the rear of the property is good sized garden that is fully enclosed, there is a off road parking and a single detached garage. Early viewings are highly advised to avoid missing out on this rarely available home. Energy rating B. Council Tax Band D.



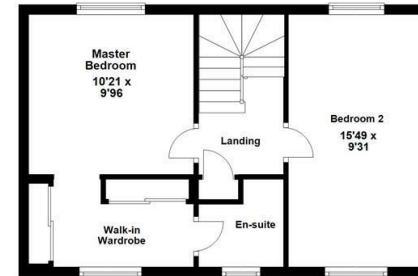
£310,000



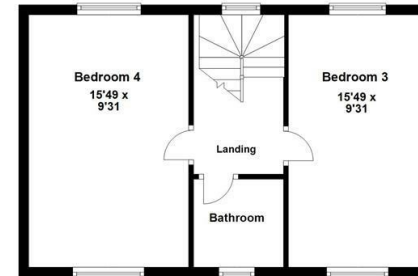
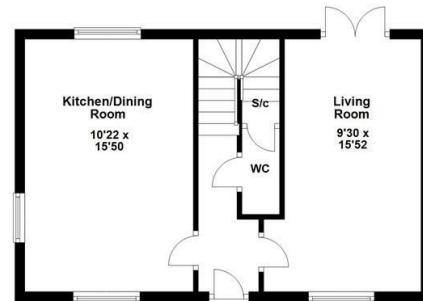
**Ground Floor**



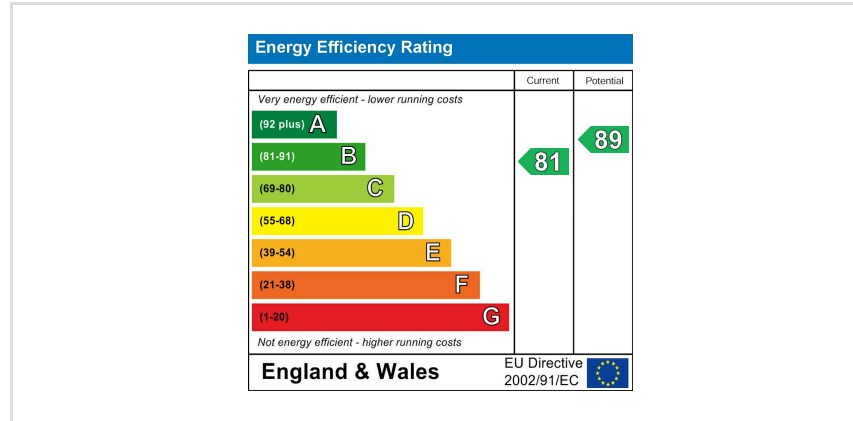
**First Floor**



**Second Floor**



Floor plan not to scale - for guidance purposes only.  
Plan produced using PlanUp.



When you buy with Simpson West, you know **you'll be in safe hands**. From the moment you walk through our doors, we'll make you **feel truly welcome**. Our sales consultants and financial advisors will take you through **every step of the process**, offering **free expert advice** along the way, from help choosing the right mortgage and insurance through to finding your conveyancer. And if you need help selling your home too, **with over 20 years of local experience, you can trust us to get you moving**.



**Simpson  
West**

Making Every  
Journey Personal



01536 202007

[info@simpsonwest.co.uk](mailto:info@simpsonwest.co.uk)

<https://www.simpsonwest.co.uk/>

64 Corporation Street, Corby, Northants, NN17 1NH