



59 Bede Close
Corby, NN18 9PE



Simpson West

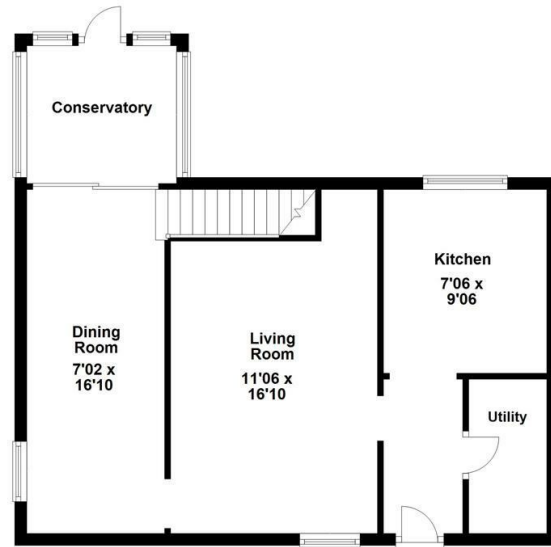
Located within the highly popular Danesholme area is this well presented THREE bedroom family residence that is nestled away within a quiet cul-de-sac and is also being offered to the market for sale with no onward chain. The property occupies a pleasant position and is located within walking distance to the local school, shops and other amenities. Features include an entrance hall, utility room (which was formally a w/c that could be reinstated), a fitted kitchen, living room and separate dining room with doors leading to the conservatory. To the first floor there are two double bedrooms, a good single bedroom and the main family bathroom. Outside there is a fully enclosed garden that is low maintenance with a large patio area. To the front there is off road parking leading to an over sized storage area. Early viewings are an absolute must. Energy rating D. Council Tax Band A.



£189,950



Ground Floor



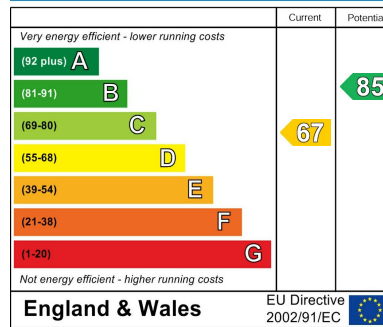
First Floor



Floor plan not to scale - for guidance purposes only.
 Floor plan created by Simpson West for their use.
 Plan produced using PlanUp.



Energy Efficiency Rating



When you buy with Simpson West, you know **you'll be in safe hands**. From the moment you walk through our doors, we'll make you **feel truly welcome**. Our sales consultants and financial advisors will take you through **every step of the process**, offering **free expert advice** along the way, from help choosing the right mortgage and insurance through to finding your conveyancer. And if you need help selling your home too, **with over 20 years of local experience, you can trust us to get you moving**.



**Simpson
West**

Making Every
Journey Personal



01536 202007

info@simpsonwest.co.uk

<https://www.simpsonwest.co.uk/>

64 Corporation Street, Corby, Northants, NN17 1NH