



24 Courteenhall Drive
Corby, NN17 5FE



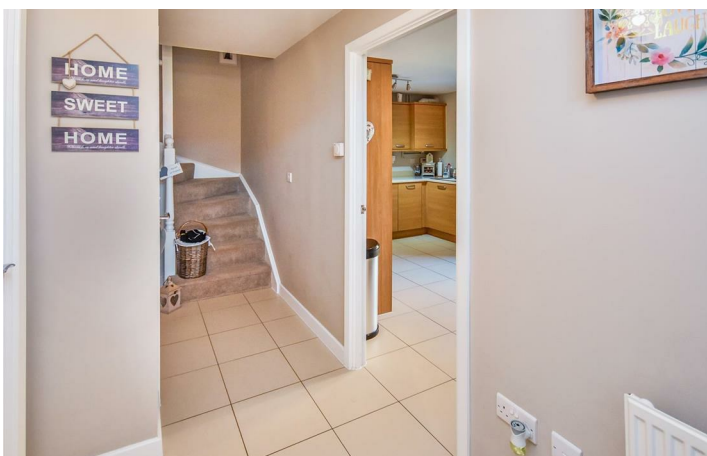
Simpson West are delighted to bring to the market this imposing FOUR bedroom semi-detached family home which is nestled in this quiet cul-de-sac on the exclusive Priors Hall Park development. This beautifully presented property benefits from a large, modern kitchen/dining room with integrated appliances, living room and a cloakroom/WC to the ground floor. The first floor consists of two double bedrooms, with the master bedroom enjoying a dressing area with fitted wardrobes and an en-suite shower room. To the second floor there are a further two double bedrooms and a modern family bathroom. To the rear there is a highly private, landscaped rear garden providing access to the GARAGE and off-road parking.

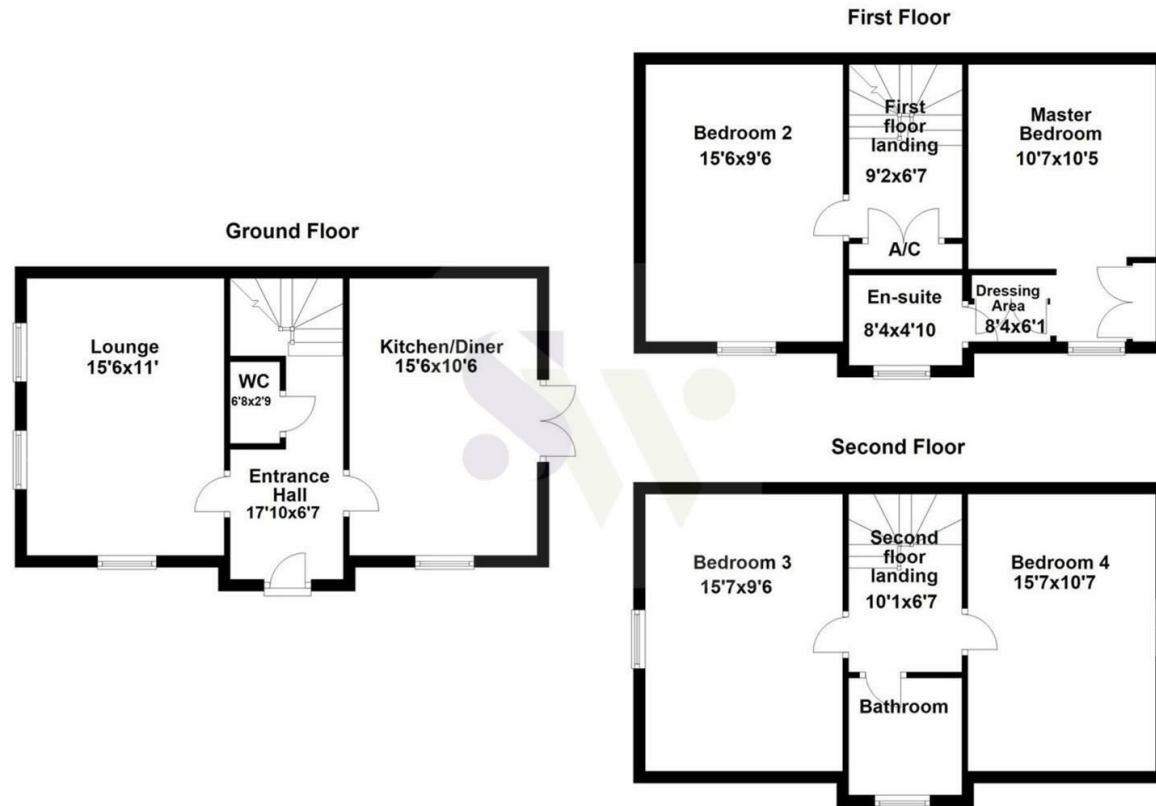
Energy Rating C. Council Tax Band D.

Urban and Civic charges apply - £278 per annum

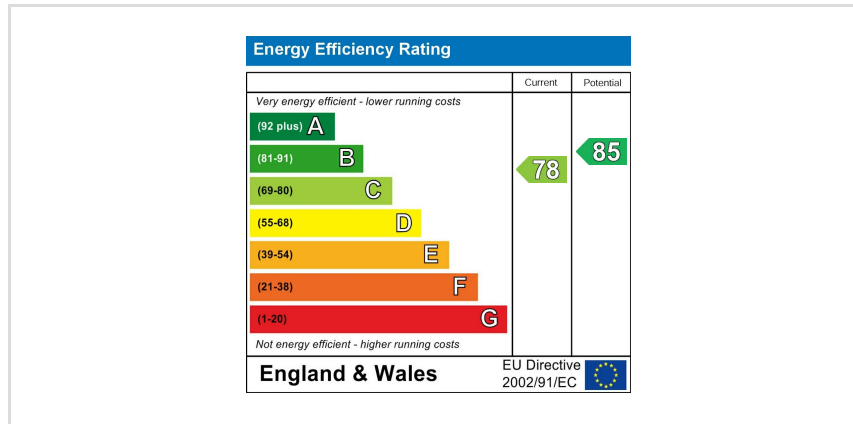


Offers In Excess Of £285,000





Floor plan not to scale - for guidance purposes only.
Plan produced using PlanUp.



When you buy with Simpson West, you know **you'll be in safe hands**. From the moment you walk through our doors, we'll make you **feel truly welcome**. Our sales consultants and financial advisors will take you through **every step of the process**, offering **free expert advice** along the way, from help choosing the right mortgage and insurance through to finding your conveyancer. And if you need help selling your home too, **with over 20 years of local experience, you can trust us to get you moving**.



**Simpson
West**

Making Every
Journey Personal



01536 202007

info@simpsonwest.co.uk

<https://www.simpsonwest.co.uk/>

64 Corporation Street, Corby, Northants, NN17 1NH