



59 Thetford Close  
Corby, NN18 9PH



**Simpson West**

Enjoying a pleasant position within this much sought after cul-de-sac which can be found within the popular Danesholme area, is this immaculately presented semi-detached property which has been much improved by the current owners. Accommodation includes a reception hall, cloakroom/WC/ living/dining room, and there is a superb, refitted kitchen with integrated appliances. The first floor provides THREE BEDROOMS with the master benefiting from fitted wardrobes and there is also a family bathroom. Outside, there is an attractive stenciled frontage with a driveway to one side providing OFF ROAD PARKING leading to the GARAGE. The rear garden is simply stunning, of L shaped design, and has been thoughtfully landscaped with easy maintenance in mind. Viewing is highly recommended of this fantastic family home if its position and condition throughout and plot are to be fully appreciated!

Energy Rating C. Council Tax Band A.



£210,000

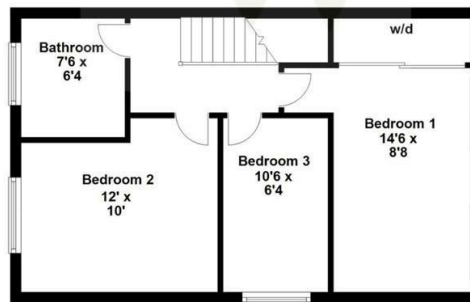
3 1 1



### Ground Floor



### First Floor



Floor plan not to scale - for guidance purposes only.  
 Floor plan created by Simpson West for their use.  
 Plan produced using PlanUp.



### Energy Efficiency Rating

	Current	Potential
<i>Very energy efficient - lower running costs</i>		
(92 plus) <b>A</b>		
(81-91) <b>B</b>		<b>85</b>
(69-80) <b>C</b>	<b>72</b>	
(55-68) <b>D</b>		
(39-54) <b>E</b>		
(21-38) <b>F</b>		
(1-20) <b>G</b>		
<i>Not energy efficient - higher running costs</i>		
<b>England &amp; Wales</b>	EU Directive 2002/91/EC	



When you buy with Simpson West, you know **you'll be in safe hands**. From the moment you walk through our doors, we'll make you **feel truly welcome**. Our sales consultants and financial advisors will take you through **every step of the process**, offering **free expert advice** along the way, from help choosing the right mortgage and insurance through to finding your conveyancer. And if you need help selling your home too, **with over 20 years of local experience, you can trust us to get you moving**.



**Simpson  
West**

Making Every  
Journey Personal



01536 202007

[info@simpsonwest.co.uk](mailto:info@simpsonwest.co.uk)

<https://www.simpsonwest.co.uk/>

64 Corporation Street, Corby, Northants, NN17 1NH