



20 Hillside Crescent
Corby, Northamptonshire NN17 3HG



Simpson West

Located within the highly sought after village of Weldon is this immaculately presented THREE double bedroom dormer detached bungalow that is being offered to the market for sale. The property occupies a pleasant position enjoying highly desirable views and benefits from being within walking distance to the local schools, shops and major transport links. Features include an entrance hall with porch area, living room, a study, the modern fitted kitchen dining room with door leading to the rear garden and two double bedrooms both boasting fitted wardrobes. To the first floor there another large double bedroom with walk in wardrobe and ensuite shower room, in addition to this there is the generous bath and shower room. Outside is a large garden that is fully enclosed, this has various seating areas and an over sized detached garage with potential to reinstate off road parking to the front. To the front of this residence is a landscaped garden. Early viewings are an absolute must. Energy rating D. Council Tax Band C.

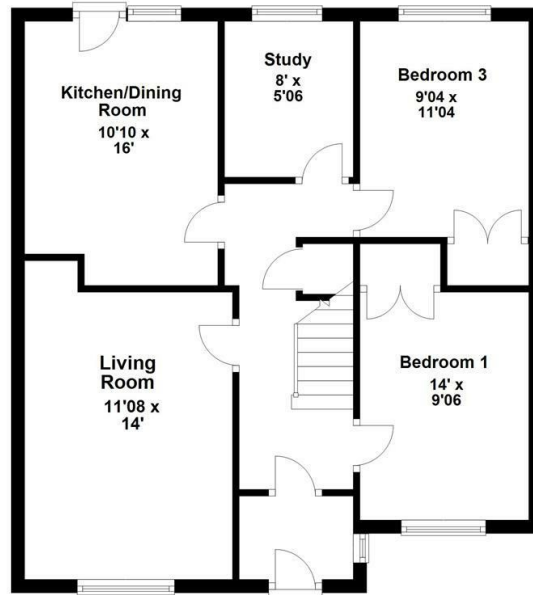


£339,950

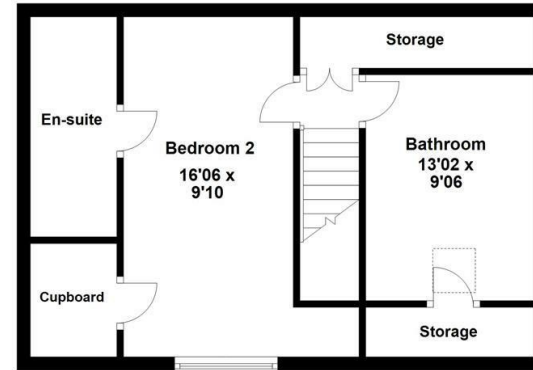
3 2 1



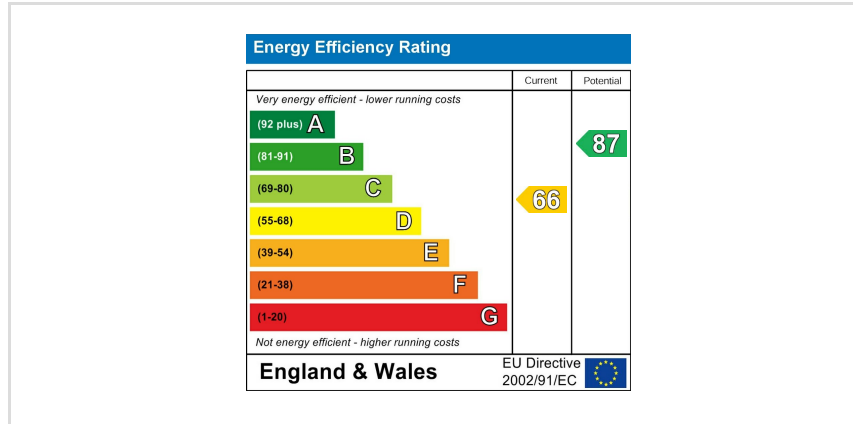
Ground Floor



First Floor



Floor plan not to scale - for guidance purposes only.
 Floor plan created by Simpson West for their use.
 Plan produced using PlanUp.



When you buy with Simpson West, you know **you'll be in safe hands**. From the moment you walk through our doors, we'll make you **feel truly welcome**. Our sales consultants and financial advisors will take you through **every step of the process**, offering **free expert advice** along the way, from help choosing the right mortgage and insurance through to finding your conveyancer. And if you need help selling your home too, **with over 20 years of local experience, you can trust us to get you moving**.



**Simpson
West**

Making Every
Journey Personal



01536 202007

info@simpsonwest.co.uk

<https://www.simpsonwest.co.uk/>

64 Corporation Street, Corby, Northants, NN17 1NH