



9 Yardley Close

Corby, Northamptonshire NN17 2YE



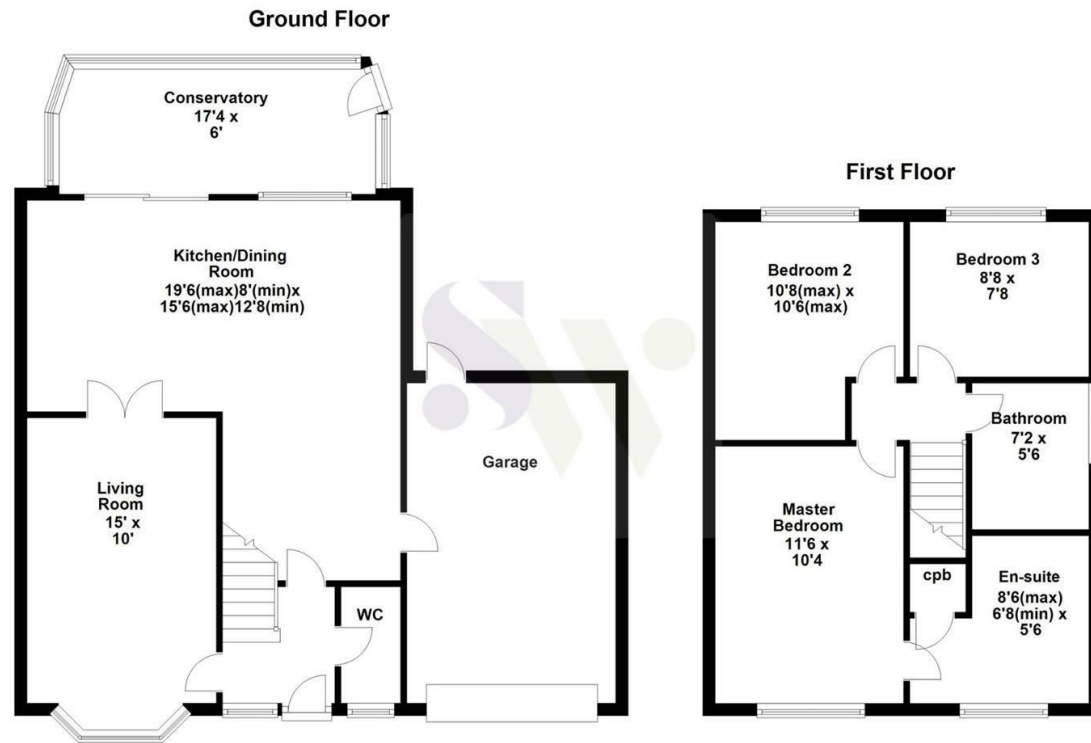
**Simpson West**



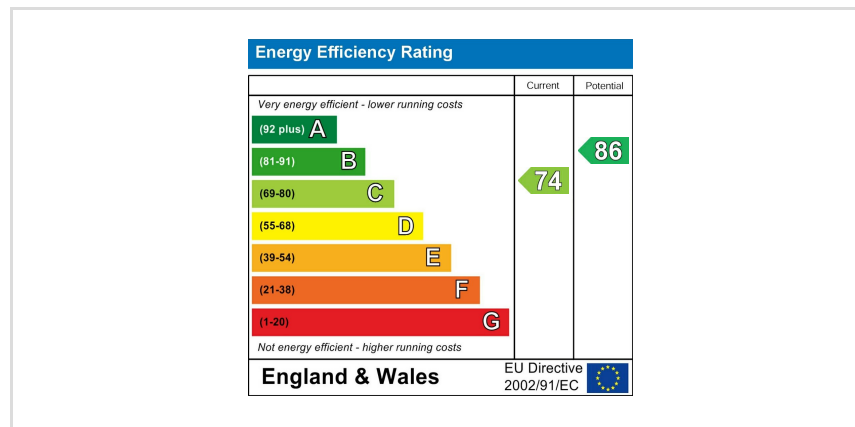
Being perfectly positioned within this much sought after cul-de-sac which can be found within the sought after Shire area, is this rarely available detached residence which is presented in outstanding condition throughout and therefore must be seen if it is truly appreciated. Accommodation includes a reception hall, cloakroom/WC, living room, a superb fully refitted kitchen/dining room and conservatory. The first floor provides THREE well balanced bedrooms with the master boasting refitted en-suite facilities, there is also a fully tiled family bathroom. Outside, an attractive open plan frontage enjoys views over green space which affords considerable privacy and benefits from additional OFF ROAD PARKING facilities and GARAGE. The rear garden is of good size is predominately laid to lawn and has been landscaped to provide two seating areas, and attractive borders. We strongly recommend an early visit to this superb home if its many improvements are to be fully appreciated. Energy Rating C. Council Tax Band C.

£299,950





Floor plan not to scale - for guidance purposes only.  
 Floor plan created by Simpson West for their use.  
 Plan produced using PlanUp.





When you buy with Simpson West, you know **you'll be in safe hands**. From the moment you walk through our doors, we'll make you **feel truly welcome**. Our sales consultants and financial advisors will take you through **every step of the process**, offering **free expert advice** along the way, from help choosing the right mortgage and insurance through to finding your conveyancer. And if you need help selling your home too, **with over 20 years of local experience, you can trust us to get you moving**.



**Simpson  
West**

Making Every  
Journey Personal



01536 202007

[info@simpsonwest.co.uk](mailto:info@simpsonwest.co.uk)

<https://www.simpsonwest.co.uk/>

64 Corporation Street, Corby, Northants, NN17 1NH