



44 Primrose Close

Corby, Northamptonshire NN18 8LE



Simpson West

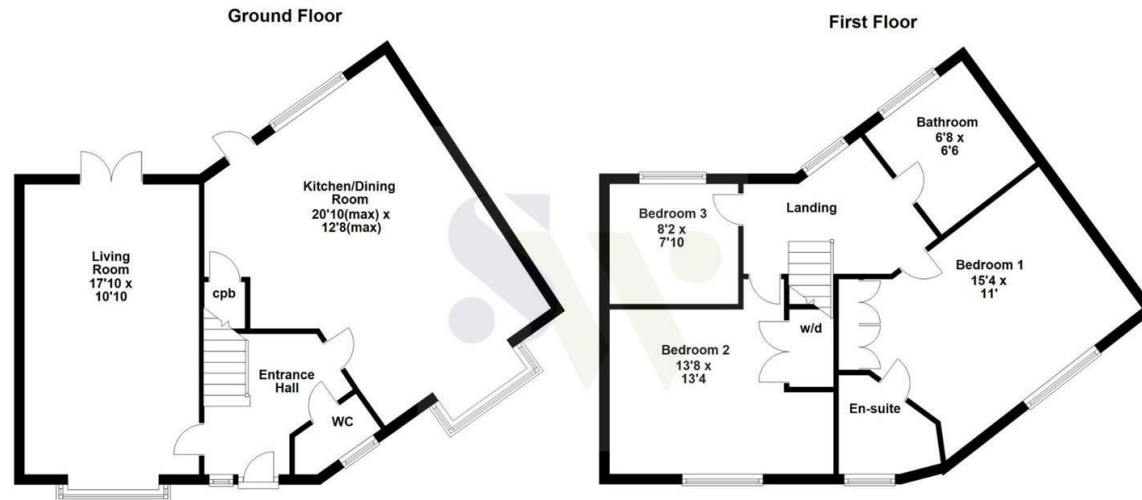
Simpson West are delighted to offer to the market for sale this immaculately presented and spacious THREE bedroom semi detached residence that is located within the highly popular Oakley Vale area. The property occupies a pleasant position and is within walking distance to the local schools, shops and other amenities. Features include an entrance hall, cloakroom w/c, a large sitting room and the impressive kitchen dining family room with door leading to the rear garden. To the first floor there are two double bedrooms, the larger of the two boasts bespoke fitted wardrobes and an en-suite shower room, in addition to this there is a good single bedroom and the main family bathroom. Outside is an established garden that is fully enclosed with patio area and an access door leading to the single garage, this boasts an EV charging point and lighting. There is a driveway to the front with a well kept frontage that is enclosed by hedging. Early viewings are highly encouraged. Energy rating C. Council Tax Band D.



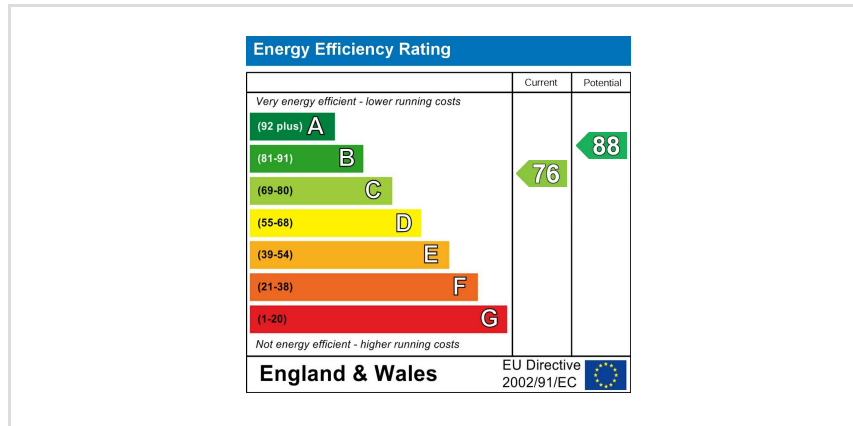
£280,000

3 2 1





Floor plan not to scale - for guidance purposes only.
 Floor plan created by Simpson West for their use.
 Plan produced using PlanUp.



When you buy with Simpson West, you know **you'll be in safe hands**. From the moment you walk through our doors, we'll make you **feel truly welcome**. Our sales consultants and financial advisors will take you through **every step of the process**, offering **free expert advice** along the way, from help choosing the right mortgage and insurance through to finding your conveyancer. And if you need help selling your home too, **with over 20 years of local experience, you can trust us to get you moving**.



**Simpson
West**

Making Every
Journey Personal



01536 202007

info@simpsonwest.co.uk

<https://www.simpsonwest.co.uk/>

64 Corporation Street, Corby, Northants, NN17 1NH