



66 Outfield Close

Corby, Northamptonshire NN18 8FX



Simpson West

Pleasantly situated within the sought after Great Oakley area is this rarely available TWO DOUBLE BEDROOMED GROUND FLOOR FLAT. The property offers accommodation to include a reception hall, a superb open plan living/dining/kitchen with integrated appliances, two bedrooms and a fantastic four-piece bathroom suite. Outside, there is allocated OFF ROAD PARKING to the rear of the property. Only by visiting this rarely available home will its highly spacious accommodation be truly appreciated; therefore, an early visit is highly recommended.

£80 PCM Service Charge/Building Insurance. Energy Rating C. Council Tax Band B.

Asking Price £159,950



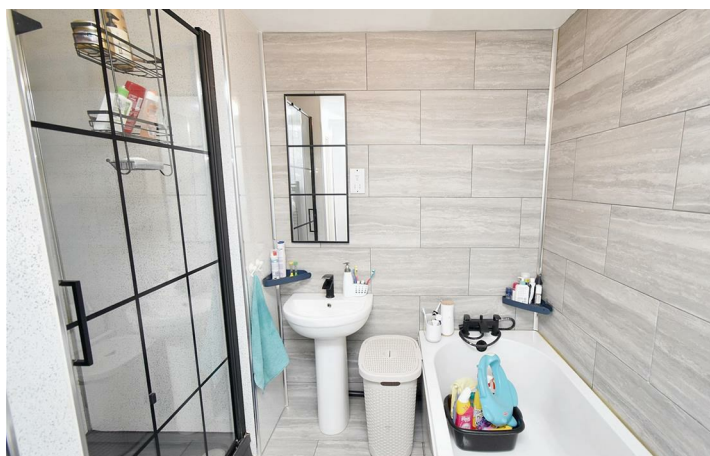
2



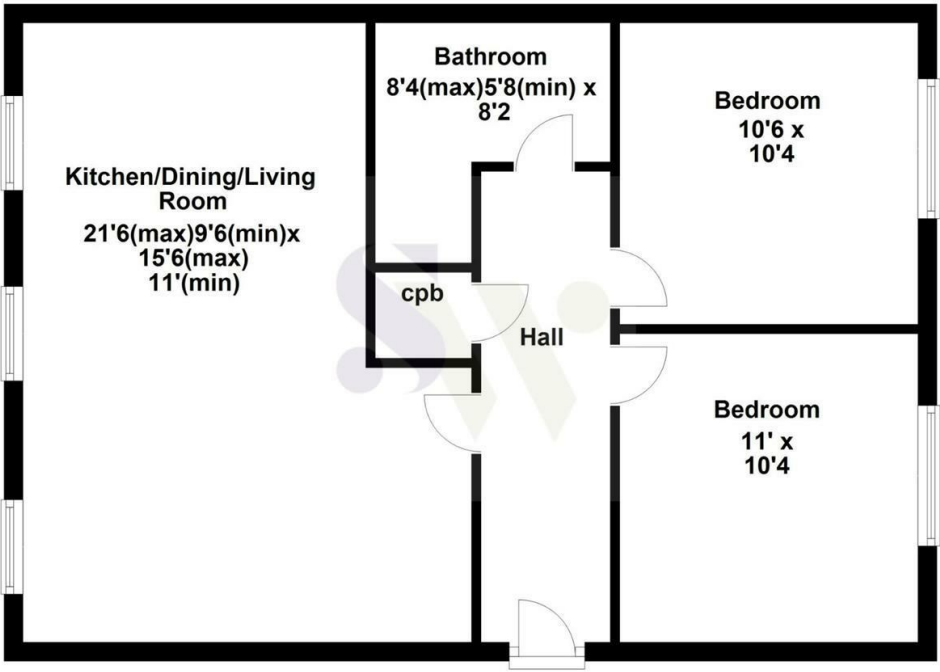
1



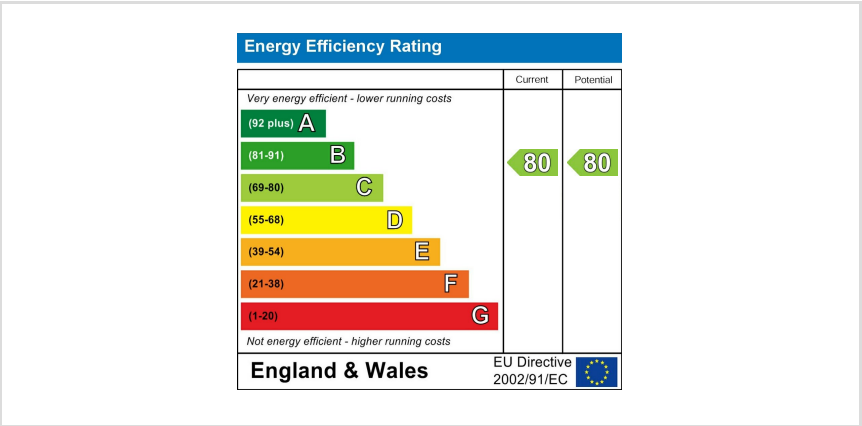
1



Ground Floor



Floor plan not to scale - for guidance purposes only.
Floor plan created by Simpson West for their use.
Plan produced using PlanUp.



When you buy with Simpson West, you know **you'll be in safe hands**. From the moment you walk through our doors, we'll make you **feel truly welcome**. Our sales consultants and financial advisors will take you through **every step of the process**, offering **free expert advice** along the way, from help choosing the right mortgage and insurance through to finding your conveyancer. And if you need help selling your home too, **with over 20 years of local experience, you can trust us to get you moving**.



**Simpson
West**

Making Every
Journey Personal



01536 202007

info@simpsonwest.co.uk

<https://www.simpsonwest.co.uk/>

64 Corporation Street, Corby, Northants, NN17 1NH