



5 Farmstead Road
Corby, NN18 0LE



Simpson West

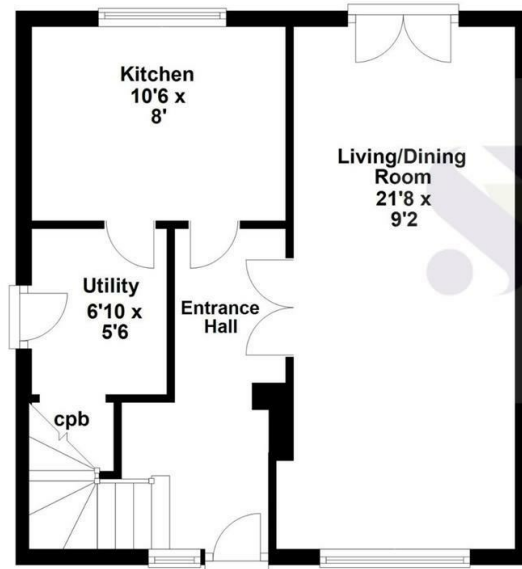
Simpson West are delighted to offer to the market for sale with no onward chain this three bedroom family home that is located within the popular Beanfield area. The property occupies a pleasant position with a south facing garden, this is within walking distance to the local schools, shops and other amenities. Features include an entrance hall, fitted kitchen with utility area and the large living dining room with doors leading to the rear garden. To the first floor there are two large double bedrooms, a good single bedroom, and the main family bathroom with separate w/c. To the rear is a large garden that is mainly laid to lawn, this is fully enclosed and boasts to potential to extend STPP. There is a garage located to the rear with parking space to the front. Early viewings are highly encouraged. Energy rating D. Council Tax Band A.



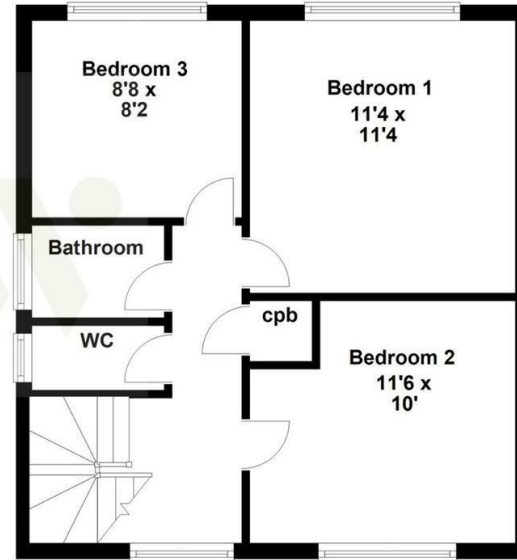
£189,950



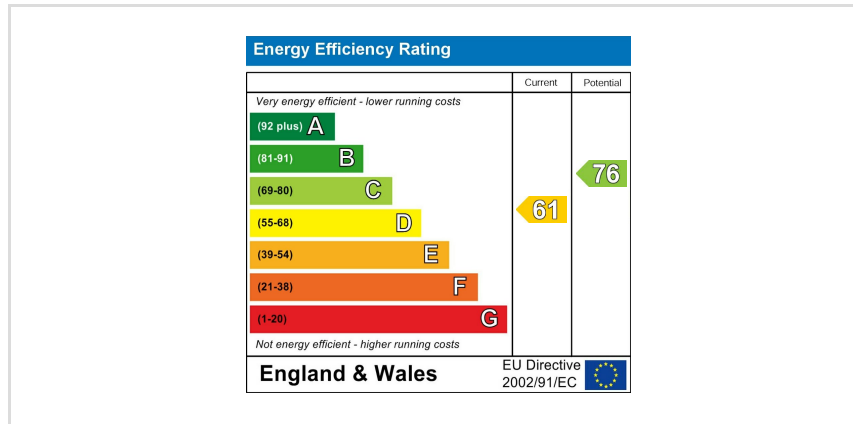
Ground Floor



First Floor



Floor plan not to scale - for guidance purposes only.
 Floor plan created by Simpson West for their use.
 Plan produced using PlanUp.



When you buy with Simpson West, you know **you'll be in safe hands**. From the moment you walk through our doors, we'll make you **feel truly welcome**. Our sales consultants and financial advisors will take you through **every step of the process**, offering **free expert advice** along the way, from help choosing the right mortgage and insurance through to finding your conveyancer. And if you need help selling your home too, **with over 20 years of local experience, you can trust us to get you moving**.



**Simpson
West**

Making Every
Journey Personal



01536 202007

info@simpsonwest.co.uk

<https://www.simpsonwest.co.uk/>

64 Corporation Street, Corby, Northants, NN17 1NH