



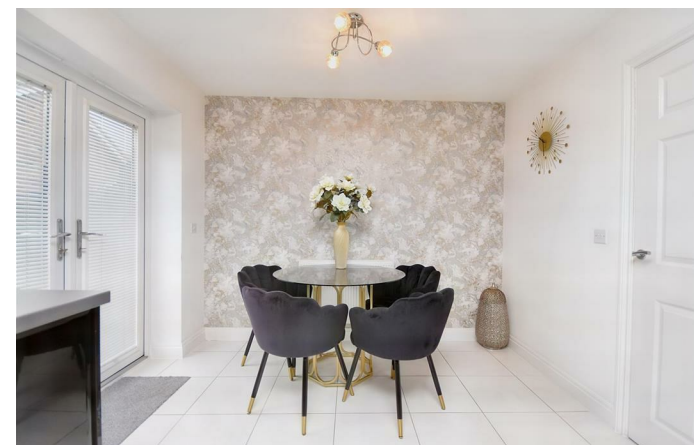
3 Woburn Close

Corby, Northamptonshire NN17 5AA



Simpson West

Located within the prestigious Priors Hall Park is this immaculately presented stone built detached residence occupying a pleasant corner plot position. The property is well located being within walking distance to the local schools, shops and other amenities and benefits from being nestled away in a quiet cul-de-sac. Features include an entrance hall, cloakroom w/c, living room with stylish bay window and a modern fitted kitchen dining room with doors leading to the rear garden. To the first floor there are two double bedrooms, with the larger boasting an en-suite shower room, in addition there is a good single bedroom and the main family bathroom. To the rear of the property is a low maintenance garden with patio area that is fully enclosed. There is a large driveway to the side providing off road parking for multiple vehicles. Early viewings are highly advised. Energy rating B. Council Tax Band C. Urban and Civic charges apply - £278 Per annum.



£285,000

3 2 1



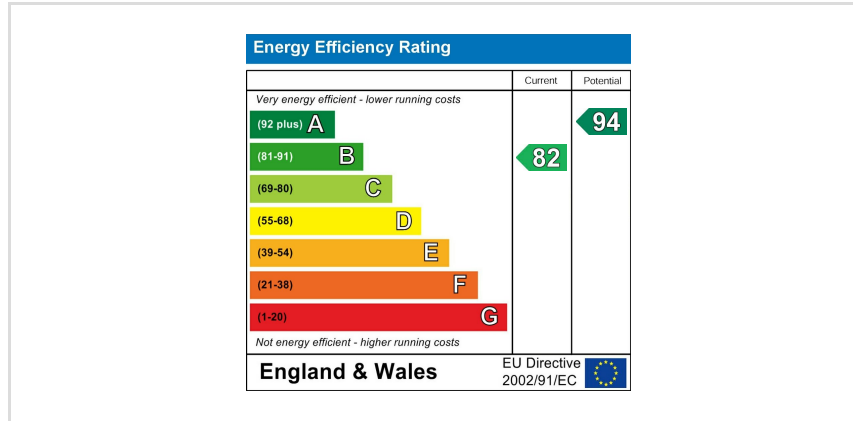
Ground Floor



First Floor



Floor plan not to scale - for guidance purposes only.
Plan produced using PlanUp.



When you buy with Simpson West, you know **you'll be in safe hands**. From the moment you walk through our doors, we'll make you **feel truly welcome**. Our sales consultants and financial advisors will take you through **every step of the process**, offering **free expert advice** along the way, from help choosing the right mortgage and insurance through to finding your conveyancer. And if you need help selling your home too, **with over 20 years of local experience, you can trust us to get you moving**.



**Simpson
West**

Making Every
Journey Personal



01536 202007

info@simpsonwest.co.uk

<https://www.simpsonwest.co.uk/>

64 Corporation Street, Corby, Northants, NN17 1NH