



5 Shackleton Close

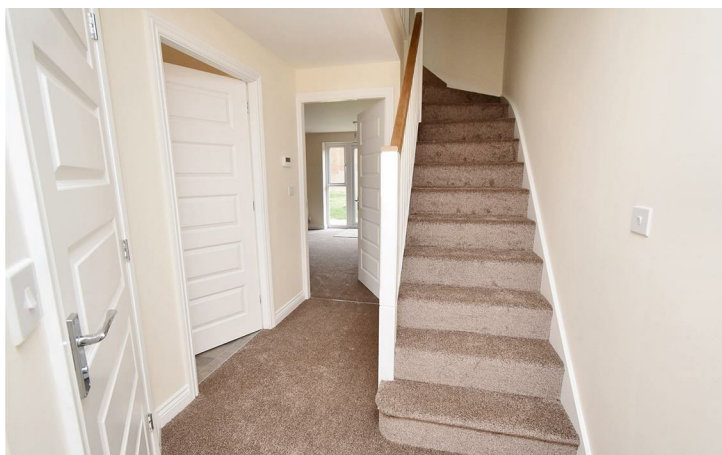
Corby, Northamptonshire NN18 8SU



Simpson West

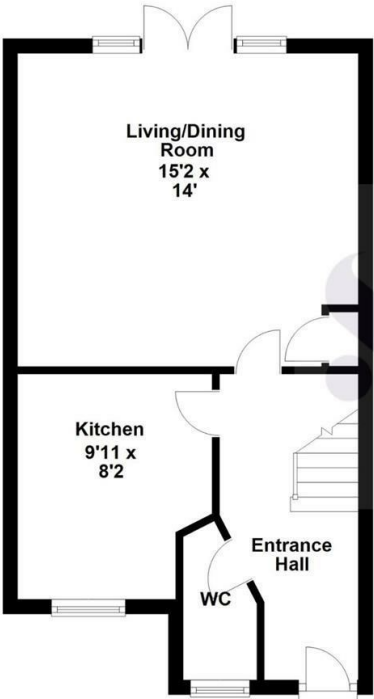
Perfectly situated within this sought after cul-de-sac which can be found within the ever-popular Oakley Vale area, is this rarely available semi-detached property which has been recently refurbished and is offered for sale with NO CHAIN. Presented in outstanding condition throughout the property offers accommodation to include a reception hall, cloakroom/WC, living/dining room, and a fitted kitchen with integrated appliances. The first floor provides THREE BEDROOMS and a family bathroom. Outside, there is an easy maintenance frontage with a driveway providing OFF ROAD PARKING for two vehicles. The rear garden leads with a patio area and leads on to a lawned garden which is fully enclosed to all sides. An early visit is highly recommended if the property's position and condition are to be fully appreciated!
Energy Rating B. Council Tax Band C.

£239,950

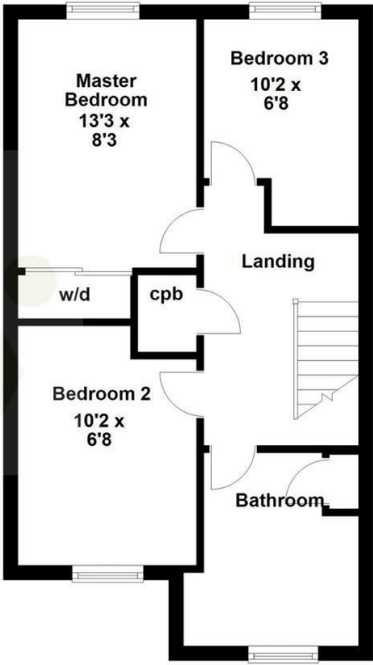


Simpson West

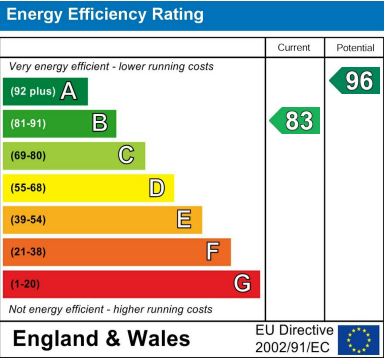
Ground Floor



First Floor



Floor plan not to scale - for guidance purposes only.
Floor plan created by Simpson West for their use.
Plan produced using PlanUp.



When you buy with Simpson West, you know **you'll be in safe hands**. From the moment you walk through our doors, we'll make you **feel truly welcome**. Our sales consultants and financial advisors will take you through **every step of the process**, offering **free expert advice** along the way, from help choosing the right mortgage and insurance through to finding your conveyancer. And if you need help selling your home too, **with over 20 years of local experience, you can trust us to get you moving**.



**Simpson
West**

Making Every
Journey Personal



01536 202007

info@simpsonwest.co.uk

<https://www.simpsonwest.co.uk/>

64 Corporation Street, Corby, Northants, NN17 1NH