

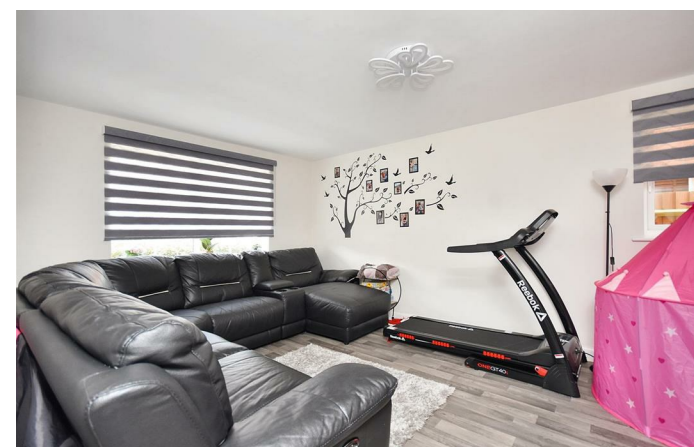


14 Douglas Road
Corby, NN18 8TQ



Simpson West

Situated within the popular Lyveden Fields development is this deceptively spacious detached residence comprising of FOUR double bedrooms built by reputable builder Barratt Homes. The property is currently being offered to the market for sale and occupies a pleasant position within the estate being within walking distance to primary and secondary schools as well as shops and other amenities. Features include an entrance hall, utility room, cloakroom w/c, a living room and the impressive kitchen dining family room with doors leading to the rear garden. To the first floor there are four double bedrooms with the larger boasting an en-suite shower room, in addition to this there is the main family bathroom. To the rear is a generous south facing garden that is mainly laid to lawn but is fully enclosed. To the front is a large driveway leading to the single integral garage. Early viewings are highly encouraged. Energy rating B. Council Tax Band E.



£335,000

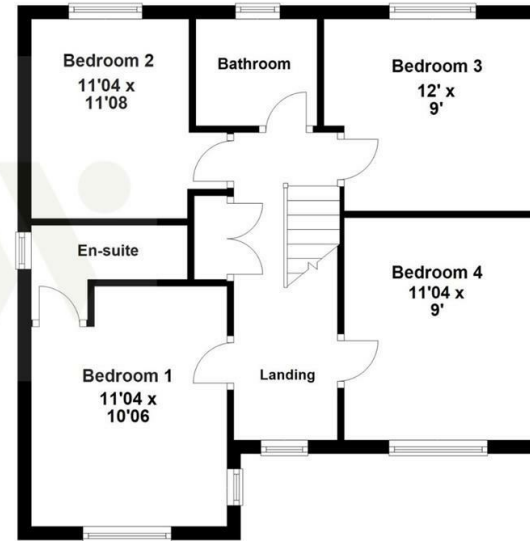
4 2 1



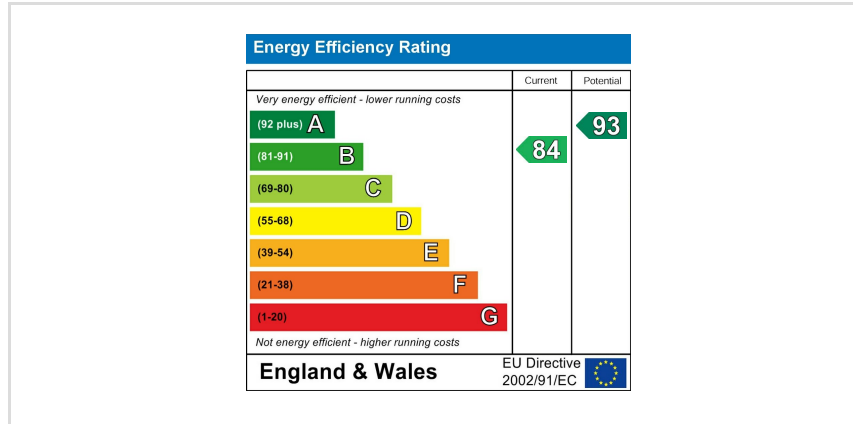
Ground Floor



First Floor



Floor plan not to scale - for guidance purposes only.
 Floor plan created by Simpson West for their use.
 Plan produced using PlanUp.



When you buy with Simpson West, you know **you'll be in safe hands**. From the moment you walk through our doors, we'll make you **feel truly welcome**. Our sales consultants and financial advisors will take you through **every step of the process**, offering **free expert advice** along the way, from help choosing the right mortgage and insurance through to finding your conveyancer. And if you need help selling your home too, **with over 20 years of local experience, you can trust us to get you moving**.



**Simpson
West**

Making Every
Journey Personal



01536 202007

info@simpsonwest.co.uk

<https://www.simpsonwest.co.uk/>

64 Corporation Street, Corby, Northants, NN17 1NH